



US008046271B2

(12) **United States Patent**
Jimenez et al.

(10) **Patent No.:** **US 8,046,271 B2**

(45) **Date of Patent:** ***Oct. 25, 2011**

(54) **METHOD AND APPARATUS FOR CUSTOM STRATEGY SPECIFICATION IN A HOSTED ELECTRONIC TRANSACTION SERVICE SYSTEM**

(75) Inventors: **Michael Pe Jimenez**, San Carlos, CA (US); **Jeffrey Leroy King**, Campbell, CA (US); **Theodore Arthur Strout**, Austin, TX (US); **Timothy Robert Harding**, Austin, TX (US)

(73) Assignee: **CyberSource Corporation**, Mountain View, CA (US)

(*) Notice: Subject to any disclaimer, the term of this patent is extended or adjusted under 35 U.S.C. 154(b) by 1489 days.

This patent is subject to a terminal disclaimer.

(21) Appl. No.: **11/441,942**

(22) Filed: **May 26, 2006**

(65) **Prior Publication Data**

US 2006/0218053 A1 Sep. 28, 2006

Related U.S. Application Data

(62) Division of application No. 10/328,936, filed on Dec. 23, 2002, now Pat. No. 7,346,551.

(51) **Int. Cl.**
G06Q 30/00 (2006.01)

(52) **U.S. Cl.** **705/26.62**

(58) **Field of Classification Search** 705/26, 705/27, 26.1, 26.2, 26.25, 26.3, 26.35, 26.4, 705/26.41–26.44, 26.5, 26.61–26.64, 26.7, 705/26.8, 26.81, 26.82, 26.9, 27.1, 27.2

See application file for complete search history.

(56) **References Cited**

U.S. PATENT DOCUMENTS

6,993,502 B1 1/2006 Gryglewicz et al.
7,076,474 B2 * 7/2006 Jin et al. 706/45
2001/0044738 A1 11/2001 Elkin et al.

(Continued)

FOREIGN PATENT DOCUMENTS

JP 2001-236405 8/2000

(Continued)

OTHER PUBLICATIONS

Robert Rowen, "Diagnostic systems for manufacturing.", AI Expert, v5, n4, p. 28(10), Apr. 1990. Retrieved from Dialog File: 275, Acc#: 01352722.*

(Continued)

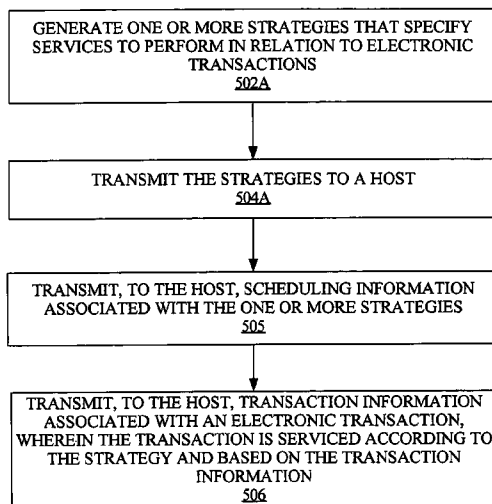
Primary Examiner — Naeem Haq

(74) *Attorney, Agent, or Firm* — Kilpatrick Townsend & Stockton LLP

(57) **ABSTRACT**

A merchant generates a customized service strategy related to a suite of electronic transaction services hosted by a service provider. The custom strategy specifies services to perform, and possibly an order in which to perform the services, by a service provider in relation to an electronic transaction associated with the merchant. Through use of a user interface, the strategy can be represented as a graphical decision tree, with terminal nodes representing services or actions. A customized strategy is transmitted to a service provider, as is transaction related information, whereby the service provider can service the transaction according to the strategy and based on the transaction information. Scheduling information that specifies different strategies to apply to different transaction scenarios can be generated. A strategy is selected by a service provider based on the scheduling information and transaction information, and is used to service one or more electronic transactions.

27 Claims, 13 Drawing Sheets



U.S. PATENT DOCUMENTS

2003/0149578 A1 * 8/2003 Wong 705/1
2004/0210445 A1 10/2004 Veronese et al.
2006/0015413 A1 1/2006 Giovannoli

FOREIGN PATENT DOCUMENTS

JP 2004-258816 * 9/2004
WO WO 98/36335 8/1998

OTHER PUBLICATIONS

“Notification of Grounds for Rejection” in Japanese Application No. 2004-565081 dated May 26, 2009 (9 pages).
Current Claims in Japanese Application No. 2004-565081, Aug. 2009 (11 pages).
McLaughlin, Brett, “Java and XML: SOAP,” *Java & XML, 2nd Edition*, Chapter 12, published Sep. 2001, 29 pages.
Communication Pursuant to Article 94(3) EPC in European application No. 03 786996.3-1238 dated Apr. 7, 2010 (6 pages).

Current Claims of European application No. 03 786996.3-1238 (2010) 3 pages.

Casati, F. et al., “Developing E-Services for Composing E-Services” Springer Berlin/Heidelberg Lecture Notes in Computer Science vol. 2068/2001, Jan. 2001, pp. 171-186 Retrieved on Mar. 8, 2010 from the Internet < <http://www.springerlink.com/content/aex9a10lfpe7f7nn> >.

Casati, F. et al., “An Open, Flexible, and Configurable System for E-Service Composition” HP Laboratories Technical Report Mar. 2000. Retrieved Mar. 8, 2010 from the Internet < <http://ftp.informatik.rwth-aachen.de/Publications/CEUR-WS/Vol-30/papers5.pdf> > (26 pages).

“Decision on Rejection” in Japanese application No. 2004-565081 dated Mar. 18, 2010 (4 pages).

Current Claims of Japanese application No. 2004-565081 (11 pages).

* cited by examiner

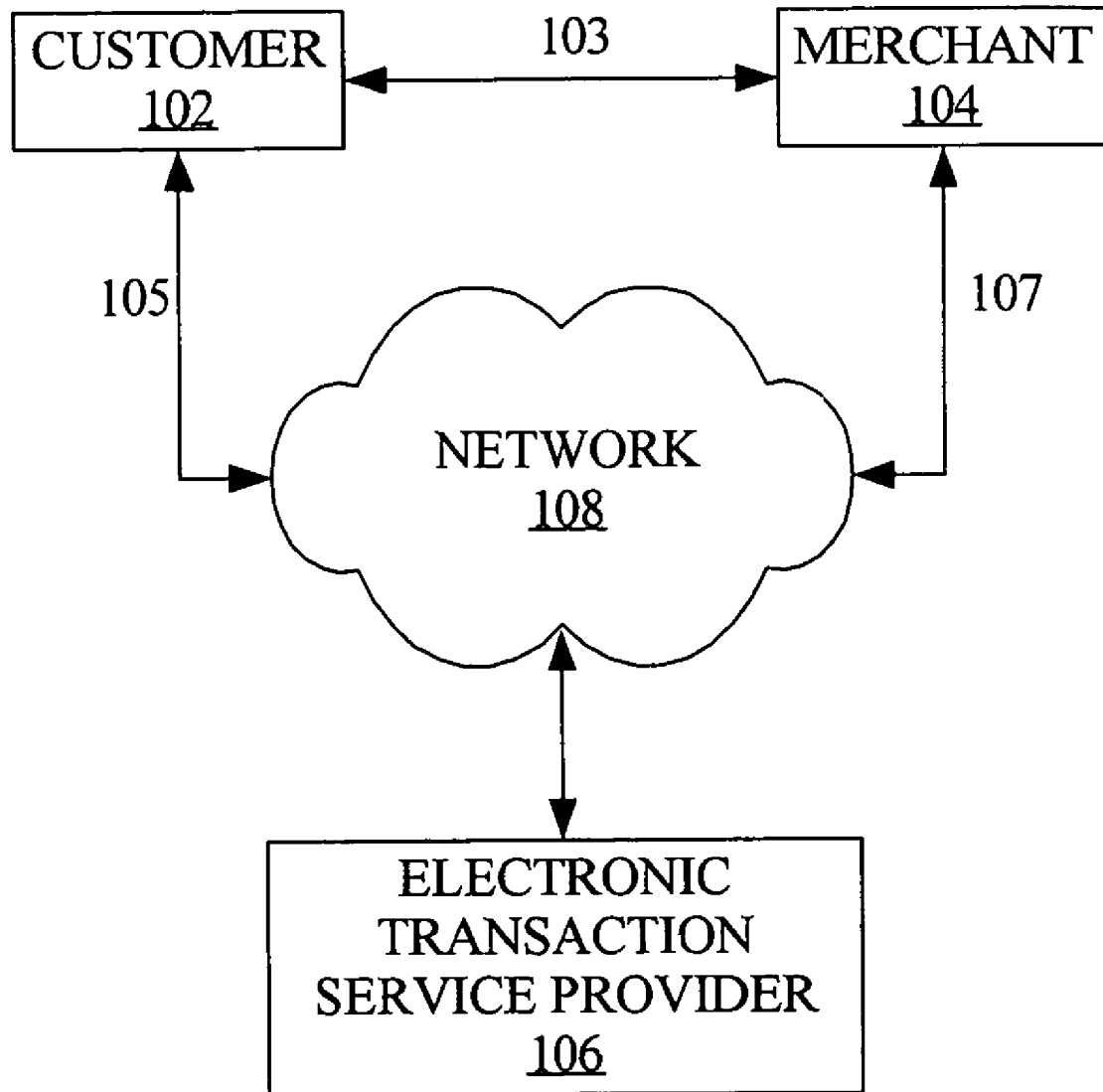


Fig. 1

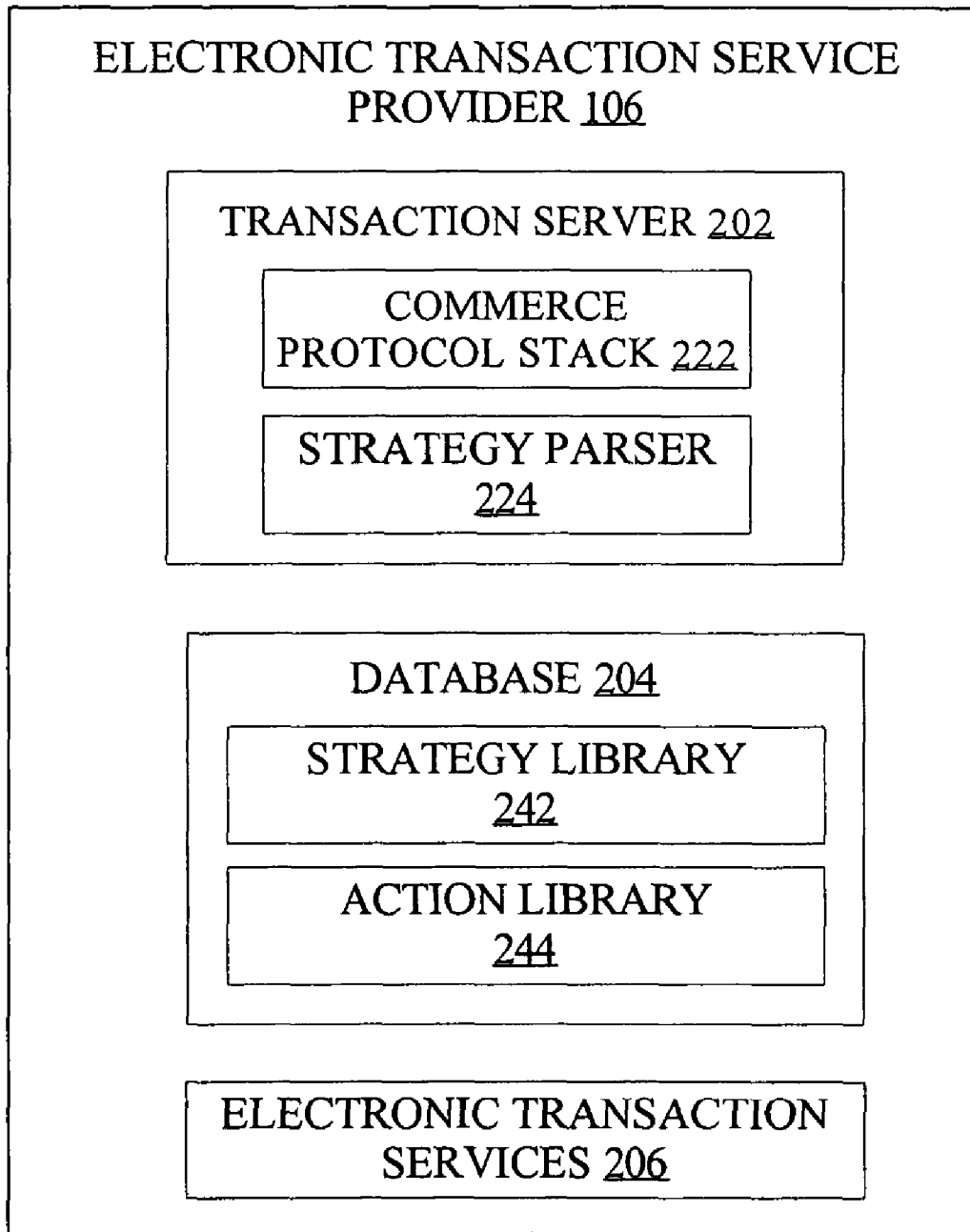
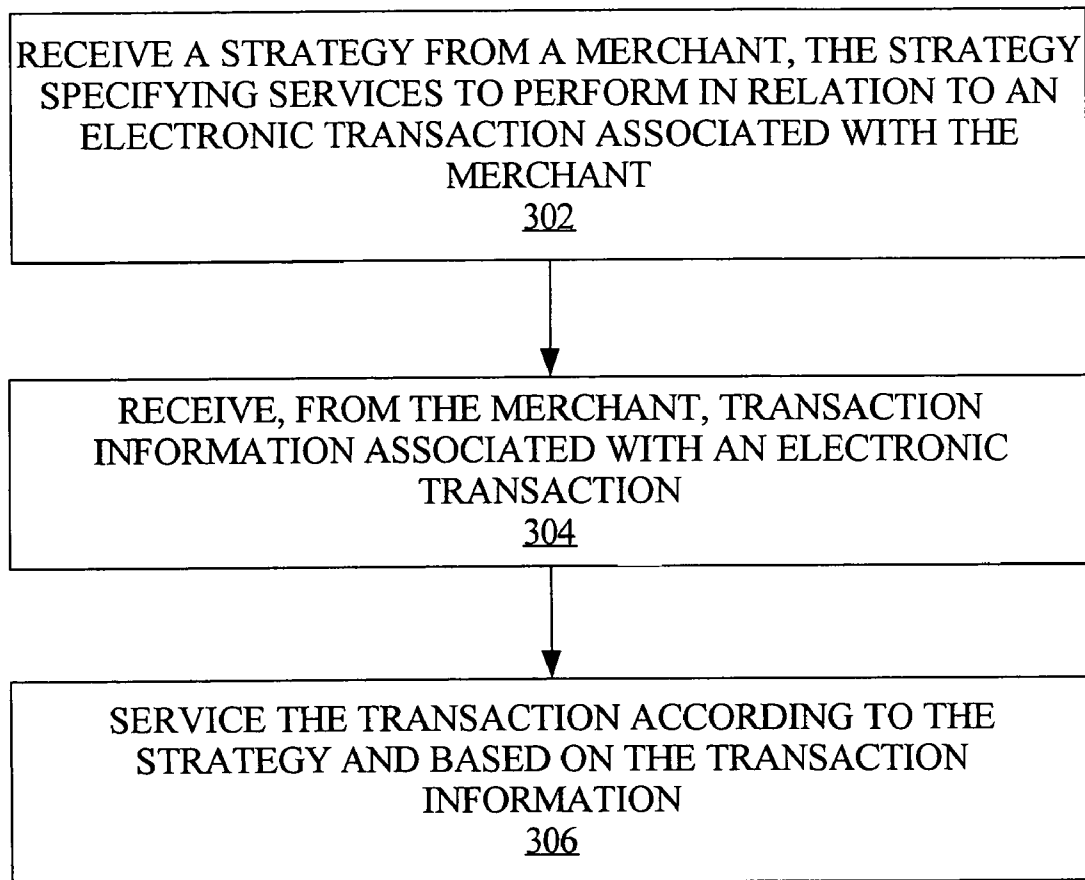
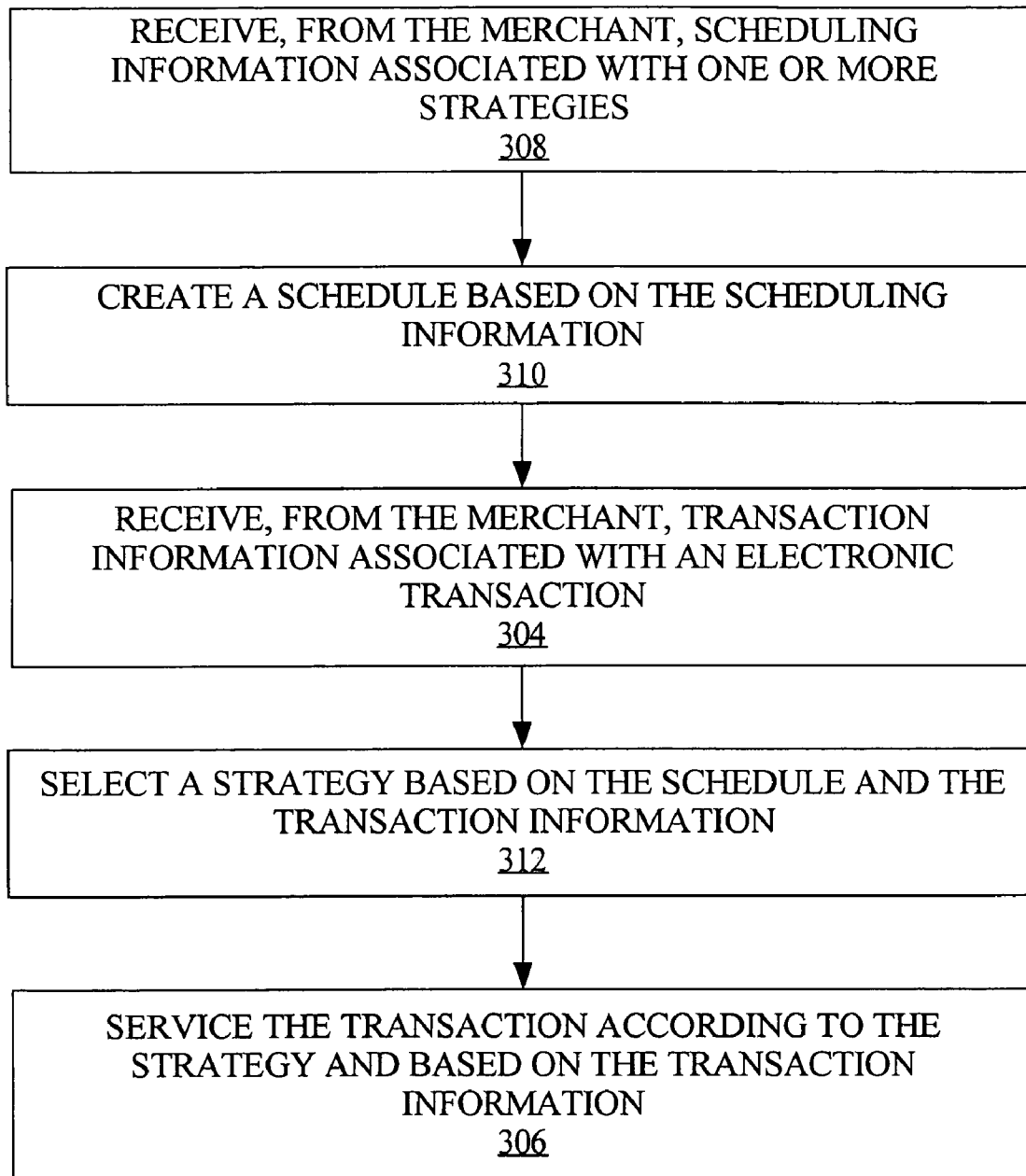


Fig. 2

*Fig. 3A*

*Fig. 3B*

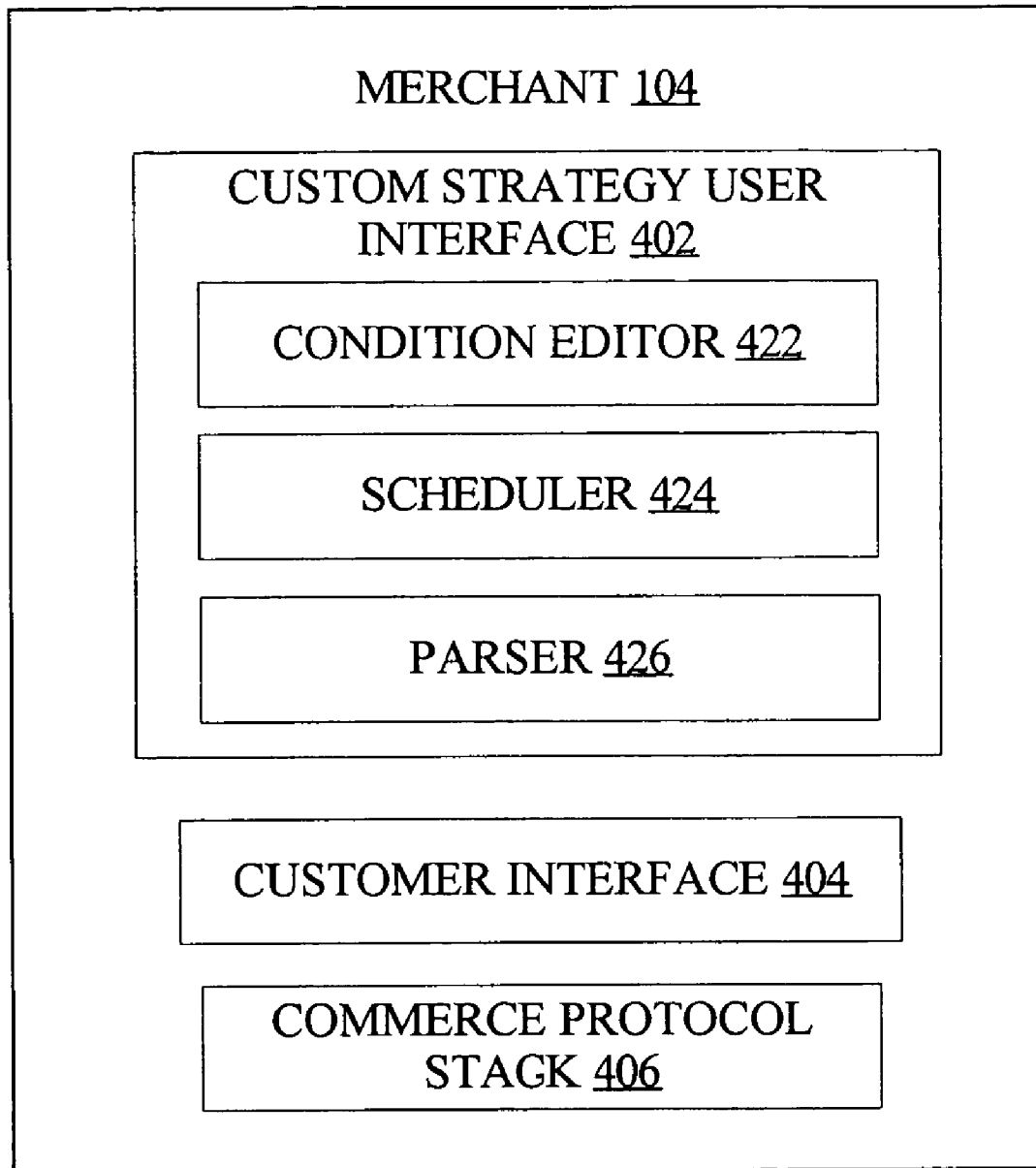


Fig. 4

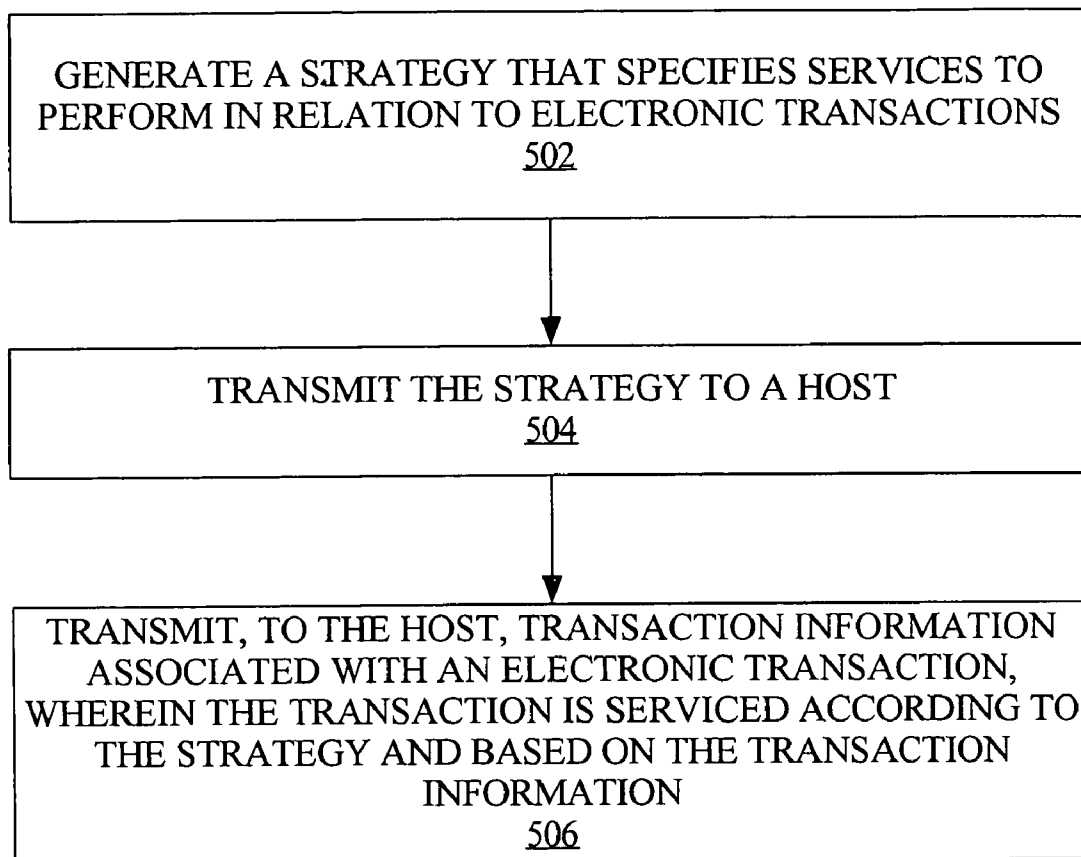


Fig. 5A

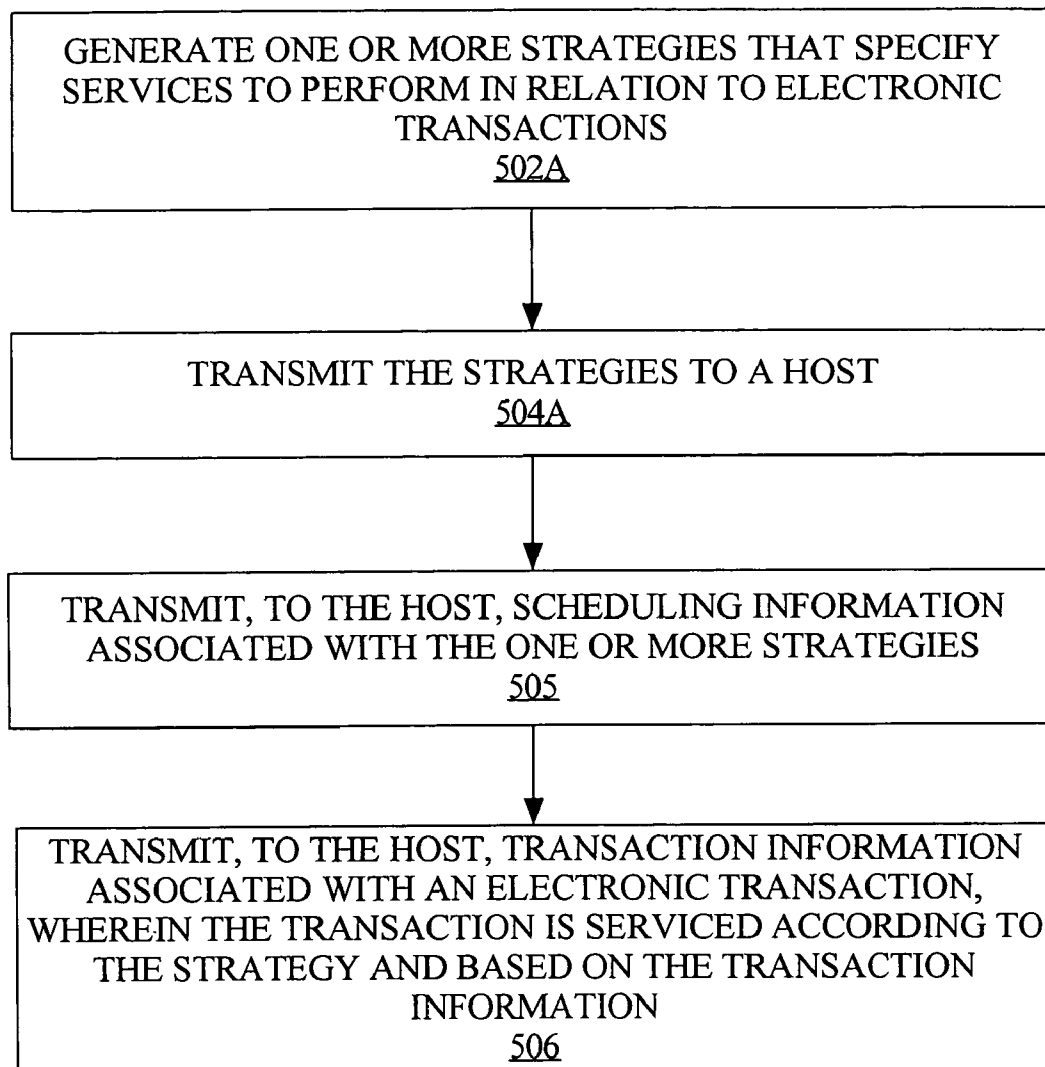
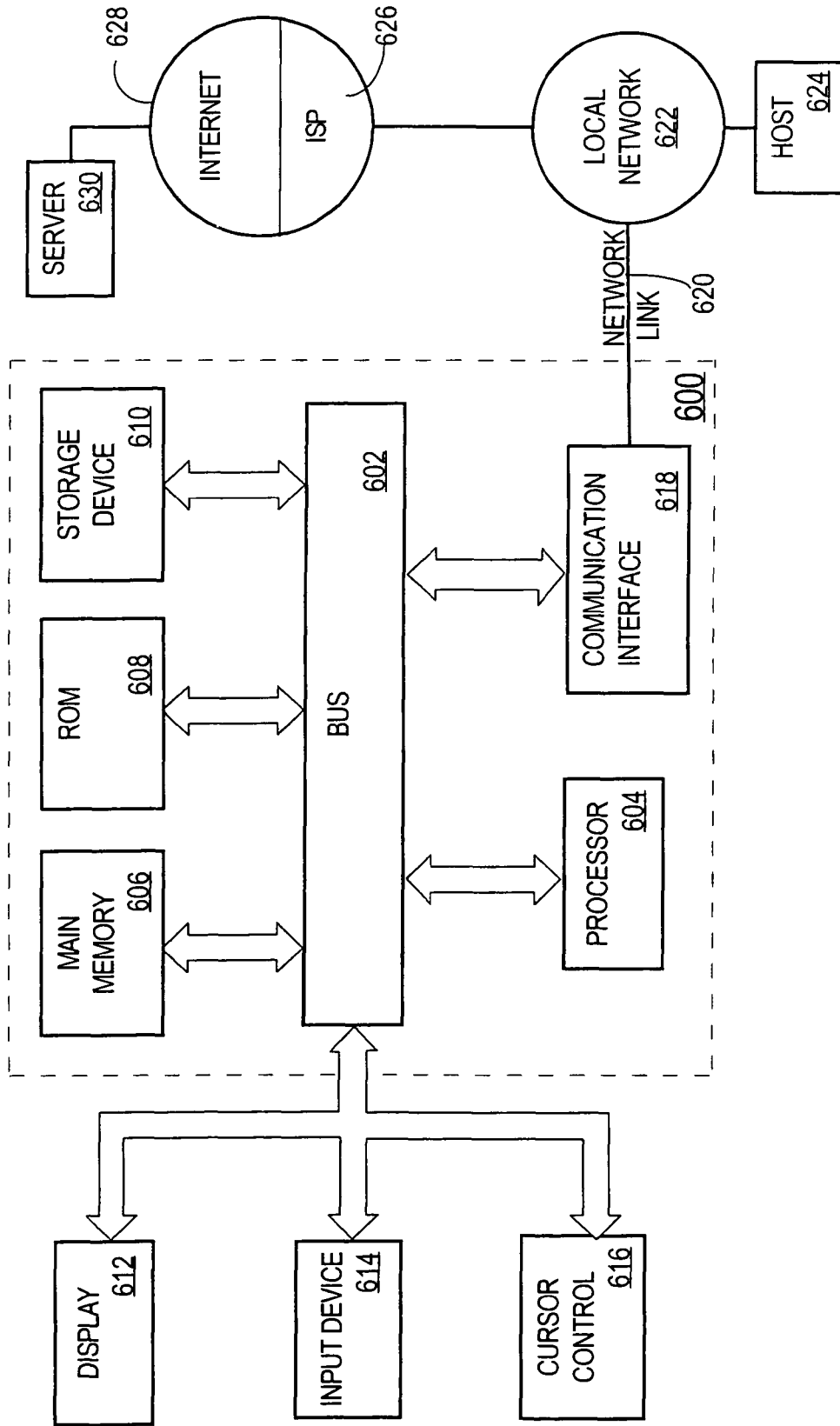


Fig. 5B

FIG. 6



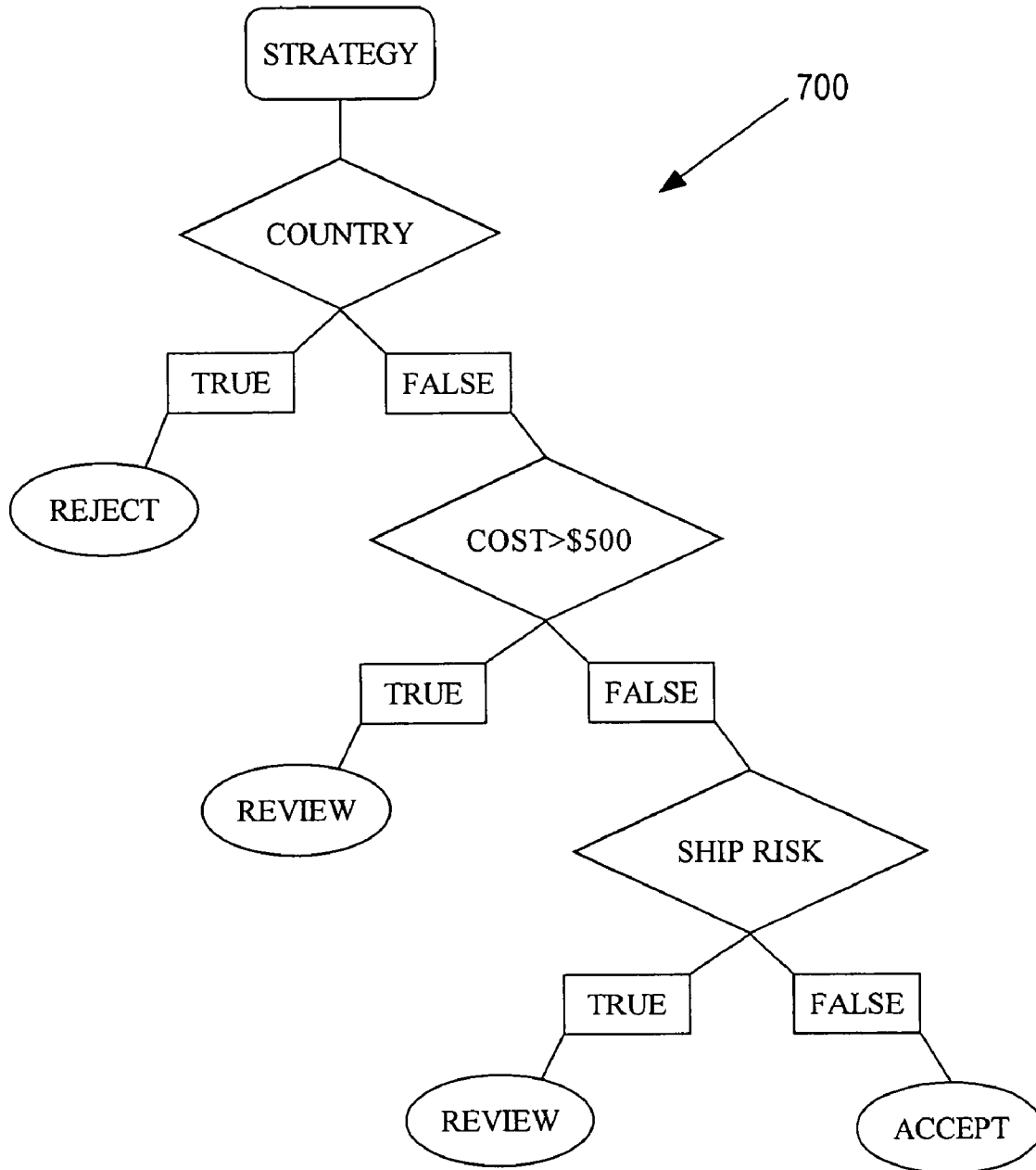


Fig. 7

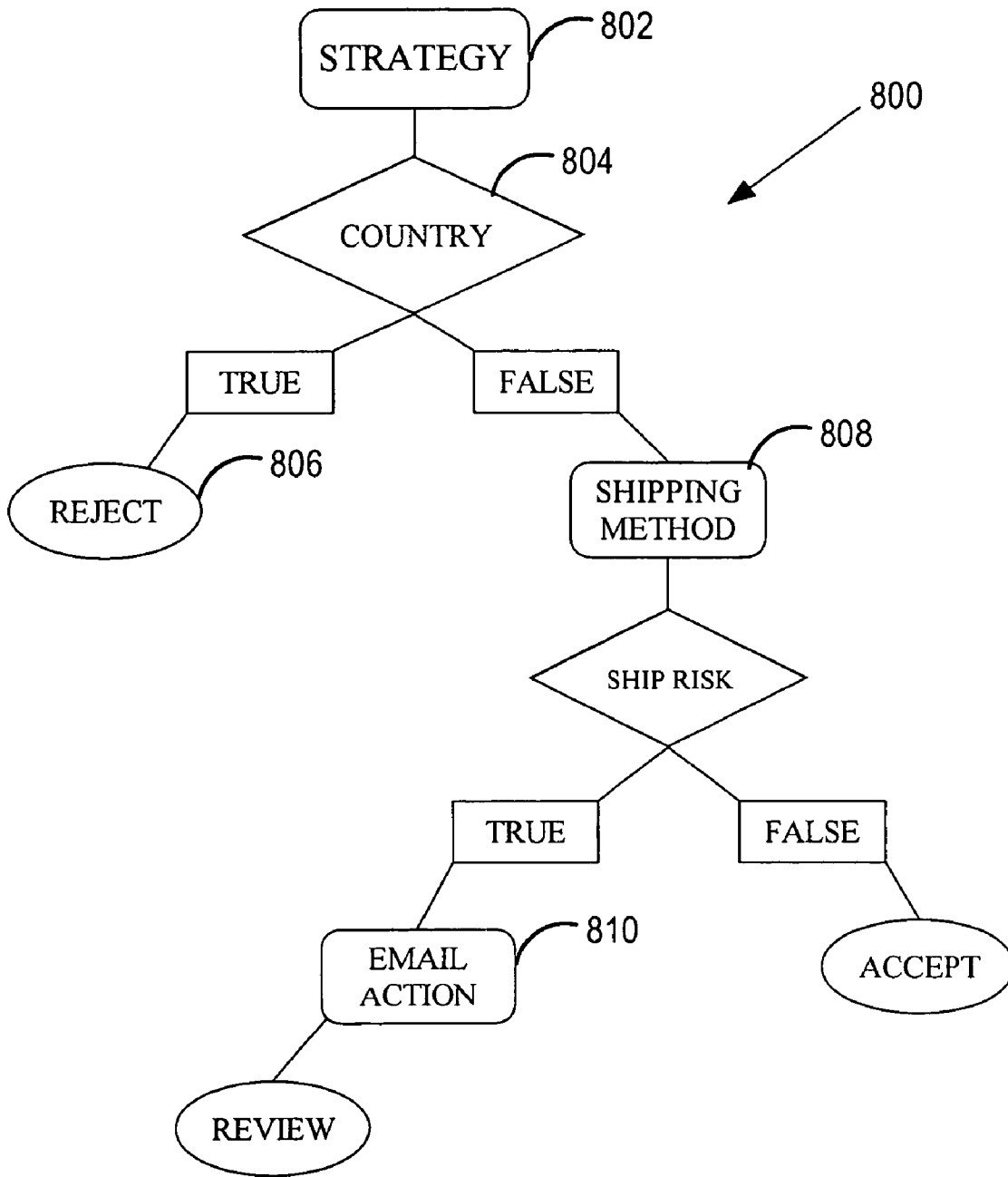


Fig. 8

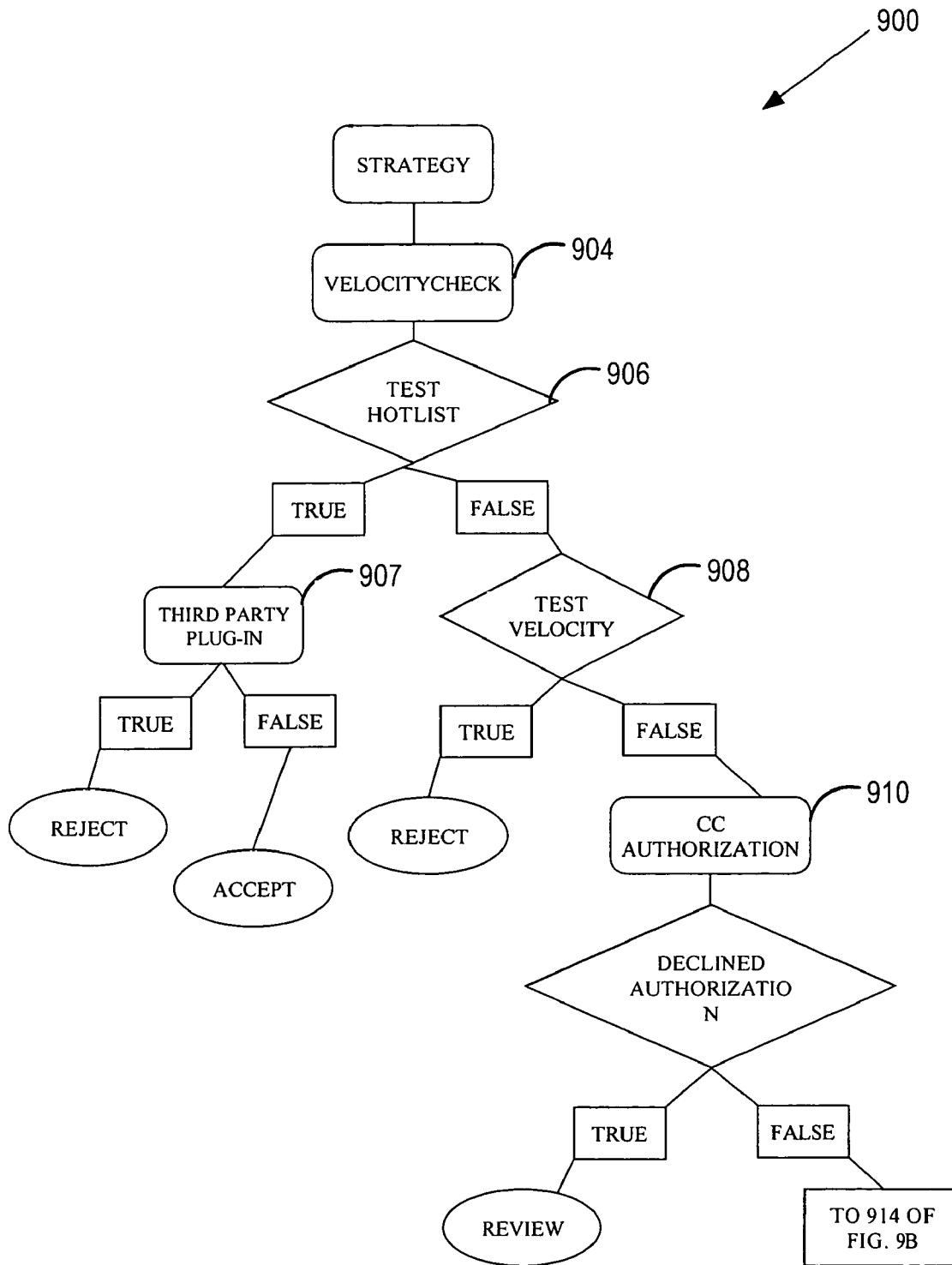


Fig. 9A

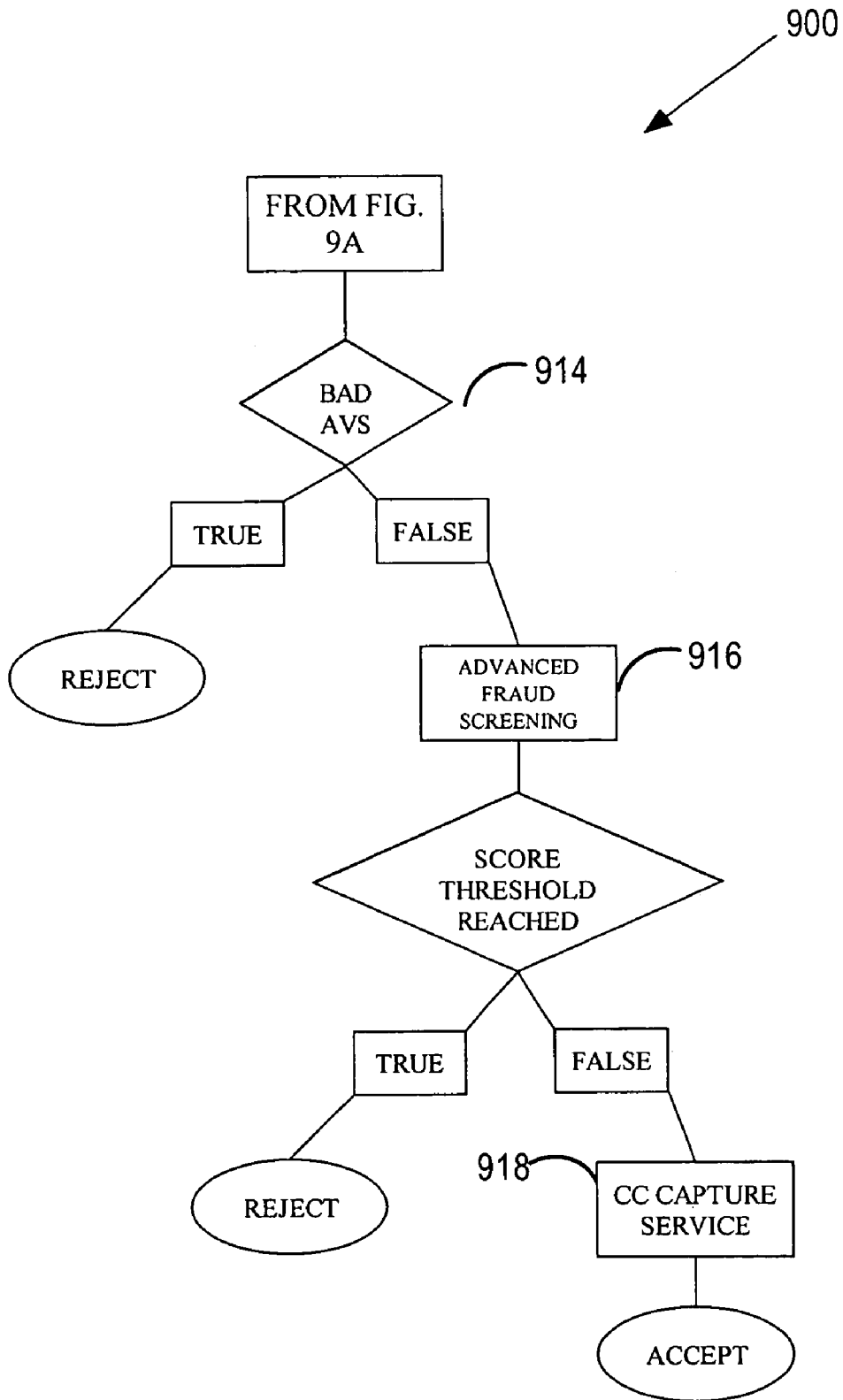


Fig. 9B

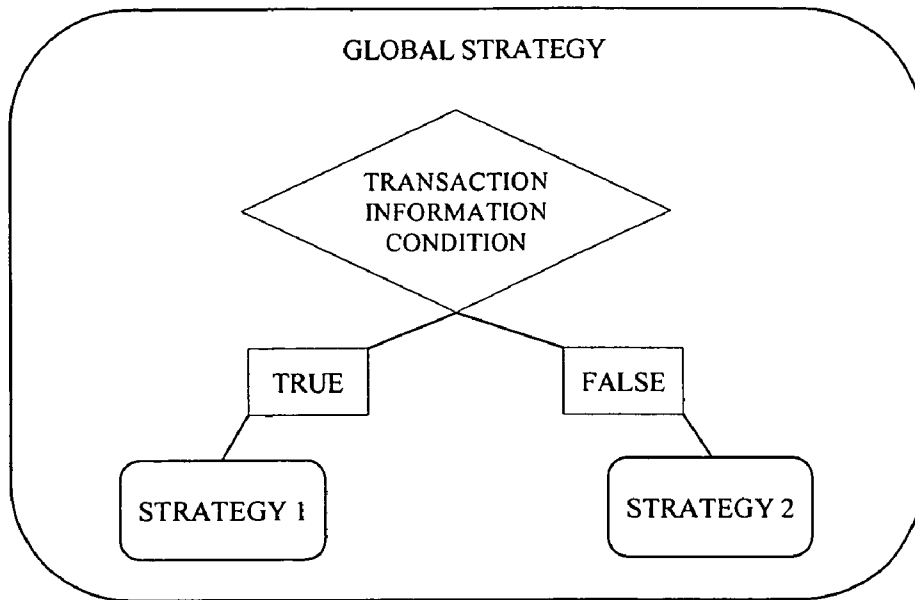


Fig. 10A

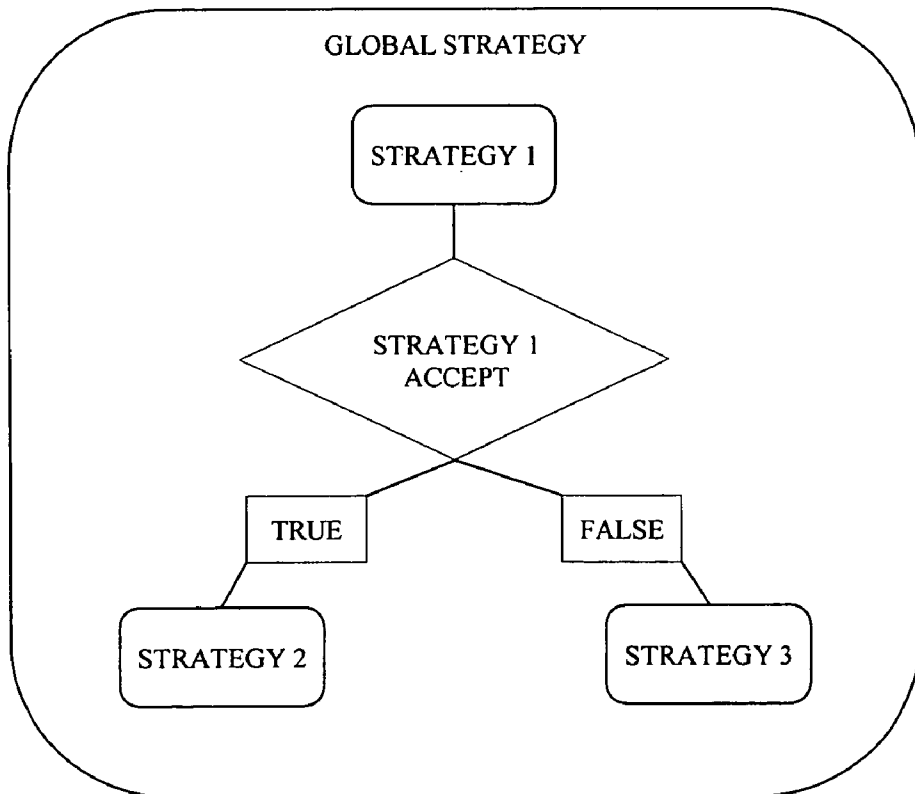


Fig. 10B

METHOD AND APPARATUS FOR CUSTOM STRATEGY SPECIFICATION IN A HOSTED ELECTRONIC TRANSACTION SERVICE SYSTEM

CROSS REFERENCE TO RELATED APPLICATIONS

This is a divisional of U.S. patent application Ser. No. 10/328,936 filed on Dec. 23, 2002 now U.S. Pat. No. 7,346,551 by Michael P. Jimenez et al., the entire content of which is incorporated by reference in its entirety for all purposes as if fully disclosed herein.

FIELD OF THE INVENTION

The present invention generally relates to electronic transaction services. The invention relates more specifically to a method and apparatus for custom strategy specification in a hosted electronic transaction service system.

BACKGROUND OF THE INVENTION

The approaches described in this section could be pursued, but are not necessarily approaches that have been previously conceived or pursued. Therefore, unless otherwise indicated herein, the approaches described in this section are not prior art to the claims in this application and are not admitted to be prior art by inclusion in this section.

Electronic and online transactions are a popular means of commerce. For example, in retail and business-to-business transactions, the use of credit, debit and bank cards to facilitate the exchange of value for goods and/or services is quite common. All uses of credit, debit and bank cards can be considered electronic transactions, for they almost always entail the electronic transmission of information from one place to another.

For example, in the context of a "brick and mortar" point of purchase, a magnetic strip on a card is swiped through an electronic card reader to read information about the customer, or card holder. This information, along with transaction-specific and merchant information, is transmitted electronically to a destination, such as an electronic transaction service provider or payment clearinghouse. In the context of online or Internet transactions, various information is submitted by a customer through a computer, which is then transmitted electronically to the merchant and/or to a third party service provider. In the context of business-to-business transactions, similar electronic exchanges of value for goods or services occur, albeit typically through means other than credit, debit and bank cards.

There are organizations that are in the business of providing third party services to facilitate electronic transactions. In this context, a third party means a party other than the merchant or customer. For example, some organizations provide various services in support of electronic transactions between merchants and customers, such as transaction authorization, payment crediting and billing services. Further, a more comprehensive electronic transaction service provider might provide numerous other services in support of and in processing of electronic transactions, such as fraud screening, tax calculation, export compliance checks, delivery address verification, Internet and/or electronic mail address verification, and the like.

One protocol used to exchange commercial transaction related information between a merchant and an electronic transaction service provider is the Simple Object Access Pro-

ocol (SOAP), an emerging standard message protocol. SOAP provides a mechanism for a program running in one operating system to communicate with a program running in the same or another operating system, by using the Hypertext Transfer Protocol (HTTP) and Extensible Markup Language (XML) as the mechanisms for information exchange. SOAP specifies how to encode an HTTP header and an XML file so that a program in one computer can call a program in another computer and pass it information, and how the called program can return a response.

In addition to containing transaction related information, a SOAP message from a merchant to a service provider may contain service related information. That is, a given SOAP message associated with a given transaction may specify services that are to be applied to the transaction. For example, a SOAP message might contain an identifier of a product or service, a credit card number, a delivery address, and identifiers of one or more services to be applied to the transaction associated with the message.

A merchant may purchase a software application or system that is installed on merchant-owned computer equipment, such as a server, and that provides electronic transaction services, or at least an interface to third party transaction services. In this context, the application is maintained and managed by the merchant, as are any interactions with service providers that provide the services used by the merchant and interfaced by the application. However, the cost of ownership, maintenance and management of such a system may be undesirable to some merchants.

Management of an application installed on a merchant-owned computer may include implementation of business rules, referred to primarily herein as strategies, for applying to the merchant's electronic transactions. For example, a merchant may create business rules or a workflow regarding the evaluation of risk or the screening for fraud with respect to its transactions, through creation of custom strategies. The custom strategies can be applied to an automated review and decision-making process with respect to the merchant's transactions. Comprehensive modifications to a service strategy may require a significant programming effort and are, therefore, undesirable or unfeasible to many merchants.

For example, CyberSource Risk Manager, a software solution offered by CyberSource Corporation, provides the ability to create custom business strategies in the context of an order decision and risk management application. Furthermore, the application provides for constructing and representing business rules graphically through an HTML-based interface. FIG. 7 is an illustration of a simple example of a graphical representation 700 of a business strategy, wherein an order is rejected if originating from a specific country, is reviewed if for over \$500 or requested same-day shipping, and is otherwise accepted. Each decision block has an underlying condition or logic that can be evaluated to "True" or "False" by a decision server to arrive at a decision as to whether to accept, review or reject a given transaction according to the business rule embodied in the strategy.

In contrast to a merchant-owned application or system, a transaction service provider may offer, and a merchant may use, hosted electronic transaction services. In this context, the services are provided using computers or other equipment and software that are generally maintained and managed by the transaction service provider, with little or no cost of ownership, maintenance or management to the merchant. Therefore, and significantly, the merchant has little or no control over the manner in which the services are applied to the merchant's transactions. Thus, services are provided by the service provider to the merchant in the form of a fixed service

strategy pursuant to an agreement. The service strategy includes a fixed, specified order in which services are provided. Any changes to the predetermined order in which services are performed, that is, to a service strategy, is pursuant to an additional or revised agreement.

Merchants can specify, in a SOAP message for example, the behavior of one or more services from a set of default services when processing a given transaction associated with the message. For example, merchants can affect behavioral "switches" or commands associated with transaction processing services, such as modifying a service output action based on results of a given service. However, merchants are limited to customization of service behavior and have no control over the flow or order of performance of the services offered by the host.

Based on the foregoing, there is a clear need for an improved mechanism for merchant-driven management of electronic transaction service suites based on merchant business rules. Further, there is a need for a mechanism to simply and remotely control or customize service strategies associated with a hosted electronic transaction service system.

BRIEF DESCRIPTION OF THE DRAWINGS

The present invention is illustrated by way of example, and not by way of limitation, in the figures of the accompanying drawings and in which like reference numerals refer to similar elements and in which:

FIG. 1 is a block diagram of an example of an operating environment in which embodiments of the invention can be implemented;

FIG. 2 is a block diagram that illustrates functional and real components utilized by a service provider in customizing a hosted electronic transaction service system;

FIG. 3A is a flowchart that illustrates a process for using a hosted electronic transaction service system to process merchant transactions with custom service strategies;

FIG. 3B is a flowchart that illustrates a process for using a hosted electronic transaction service system to process merchant transactions with custom service strategy schedules;

FIG. 4 is a block diagram that illustrates functional and real components utilized by a merchant for customizing a hosted electronic transaction system;

FIG. 5A is a flowchart that illustrates a process for customizing a hosted electronic transaction service system;

FIG. 5B is a flowchart that illustrates a process for customizing a hosted electronic transaction service system using a schedule;

FIG. 6 is a block diagram that illustrates a computer system upon which an embodiment may be implemented;

FIG. 7 is an illustration of a simple example of a graphical representation of a business strategy;

FIG. 8 is an example of a custom service strategy for processing electronic transactions in a hosted service environment;

FIGS. 9A and 9B illustrate an example of a custom service strategy for processing electronic transactions in a hosted service environment; and

FIG. 10A and FIG. 10B are block diagrams that graphically depict nested strategies.

DETAILED DESCRIPTION OF EMBODIMENTS OF THE INVENTION

A method and apparatus for custom strategy specification in a hosted electronic transaction service system is described. In the following description, for the purposes of explanation,

numerous specific details are set forth in order to provide a thorough understanding of the present invention. It will be apparent, however, to one skilled in the art that the present invention may be practiced without these specific details. In other instances, well-known structures and devices are shown in block diagram form in order to avoid unnecessarily obscuring the present invention.

Overview

According to one aspect, a method for processing transactions in a hosted electronic transaction service system based on a custom strategy comprises receiving a strategy from a merchant. The strategy specifies one or more services to perform in relation to an electronic transaction associated with the merchant. Transaction information associated with an electronic transaction is received from a merchant, and the transaction is serviced according to the strategy and based on the transaction information. In an embodiment, the strategy further specifies an order in which to perform the one or more services. In another embodiment, a strategy includes a conditional expression.

According to another aspect, a method for customizing a hosted electronic transaction service system comprises generating a strategy, wherein the strategy specifies one or more services to perform in relation to an electronic transaction associated with a merchant. The strategy may include a conditional expression. The strategy is transmitted to a host of electronic transaction services. Further, transaction information associated with an electronic transaction is transmitted to the host, and the transaction is serviced according to the strategy and based on the transaction information.

In an embodiment, the strategy is generated by representing the strategy as a graphical decision tree. According to various embodiments, the nodes of the graphical decision tree that represents a service strategy for hosted electronic transaction services can represent a service provided by a service provider or can represent a merchant or client specified action.

Through use of a custom strategy user interface, a merchant can construct and generate a customized service strategy related to a suite of electronic transaction services offered by a service provider, without having to program a software application. Hence, people without experience in computer programming can easily create or modify a strategy and, thus, remotely affect the behavior of the service provider's service system. Furthermore, the merchant can request that its transactions are processed in a certain manner, without having to modify the nature of the transaction information typically provided to the service provider.

According to embodiments, scheduling information is generated and transmitted from a merchant to a service provider. The scheduling information specifies a first strategy to be used to service one or more first transactions associated with the merchant and a second strategy to be used to service one or more second transactions associated with the merchant. A strategy is selected by a service provider based on the scheduling information and transaction information. The strategy is used to service the electronic transaction represented by the transaction information.

According to embodiments, receiving or transmitting a strategy includes receiving or transmitting, respectively, (1) a strategy that specifies a first strategy to use to service an electronic transaction when a transaction information is in a first state and a second strategy to use to service an electronic transaction when the transaction information is in a second state; and (2) a strategy that specifies a second strategy to be used to further service the electronic transaction when a first

strategy outputs a first result and a third strategy to be used to further service the electronic transaction when the first strategy outputs a second result.

Operating Environment Example

FIG. 1 is a block diagram of an example of an operating environment in which embodiments of the invention can be implemented.

FIG. 1 depicts a customer 102, a merchant 104, and an electronic transaction service provider 106 (“service provider”), communicatively connected through a network 108. The environment illustrated in FIG. 1 is referred to as a hosted service environment, wherein the service provider 106, acting as a “host”, hosts services for clients, such as merchants 104. A merchant 104 can transmit information associated with electronic transactions to a service provider 106. The service provider 106 performs one or more services based at least on the transaction information received from the merchant 104.

Customer 102 is, generally, any entity that is a purchaser of products or services via an electronic transaction. Non-limiting examples include a person who purchases or licenses goods at a retail store using a credit card, a person who purchases or licenses goods through the public Internet, and a business representative who purchases a business commodity or service through the public Internet. Merchant 104 is, generally, any entity that offers goods or services in exchange for value.

Service provider 106 is a third party other than the customer and merchant, that provides services in support of electronic transactions. Non-limiting examples of such services include services related to credit card authorization, risk evaluation and management, fraud screening, tax calculation, export compliance verification, delivery address verification, Internet and/or e-mail address verification, payment crediting, billing, and the like. Service providers 106 may invoke service features of other service providers in support of their service offerings. Network 108 is any private or public network, or a combination of private and public networks. For example, network 108 may comprise the public Internet or the PSTN (Public Switched Telephone Network).

Customer 102 and merchant 104 may communicate directly, such as at a point of purchase, as represented by link 103. Alternatively, customer 102 and merchant 104 may communicate indirectly through network 108 on links 105 and 107, such as with Internet-originated transactions. As part of a purchasing process, certain information is collected from the customer 102 by the merchant 104 or an associated agent. Non-limiting examples of information collected from a customer 102 include information about the credit or bank card used for the transaction, the item purchased, and shipping and billing addresses.

Once various transaction and customer related information is collected by a merchant 104, the merchant transmits at least a portion of the information to a service provider 106 through network 108. Additional information may be transmitted along with the information described. For example, merchant 104 may transmit customized data or a specification of service provider 106 services to apply, or to ignore, in the electronic transaction processing that is provided by the service provider 106. Although not limited to any specific information, the types of information described above are referred to collectively herein as “transaction information.” Furthermore, according to embodiments described herein, customer-specified service strategies and schedules may also be transmitted from a merchant 104 to a service provider 106. Any or all of the information referenced above, which is transmitted from a merchant 104 to a service provider 106, may be trans-

mitted through network 108 in any suitable protocol. An example of a suitable protocol is the Simple Object Access Protocol.

Service provider 106 performs one or more services in relation to the electronic commercial transaction associated with transmitted transaction information. Typically, when not implementing embodiments described herein, service provider 106 performs services in a manner predetermined by the service provider 106, unless merchant 104 uses an “ignore” command in a transmission to a service provider 106. For example, specific services are performed in a specific order for specific merchants 104, according to a service provider default or to an agreement between the merchant 104 and the service provider 106. Furthermore, when not implementing embodiments, the manner of processing transactions for a given merchant 104 applies to all transactions submitted by a merchant 104 to a service provider 106.

Service Provider Functional Components

Non-limiting examples of various services that may be provided by a service provider 106 are described as follows.

Payment Services

1. Credit Card Services provide real-time Internet payment processing that is secure and reliable, supporting real-time authorization to many credit card processors and foreign banks in multiple currencies worldwide. Settlements requested by merchants 104 are compiled, submitted, and archived by service provider 106. Service provider 106 may also provide transaction reports on reconciliation payments for auditing against bank-issued reports.

2. Electronic Check Services enable a merchant 104, as well as electronic commerce-enabled businesses and government institutions, to accept personal or business checks online, in real-time, as payment for goods and services. Service provider 106 may supply all of the back-office functionality required to facilitate the funds transfer.

3. Tax Calculation provides accurate electronic commerce tax calculation for United States and foreign jurisdictions, and may support Value Added Tax calculations for countries worldwide.

Stored Value Services

1. Stored Value Services enable merchants 104 to create and redeem private-label certificates without building the transaction processing infrastructure. Using service provider 106 technology, merchant certificates can be produced with the look and feel of the merchant’s company and products. Service provider 106 creates a stored value, or certificate, account for each certificate. Recipients use certificates to purchase products and services available on the merchant’s Web site, while service provider 106 maintains each certificate account.

Risk Management Services

1. Advanced Fraud Screen enables a merchant 104 to determine the level of risk it wants to accept in an electronic transaction. A merchant 104 can vary the risk threshold and risk characteristics by product, and can also define parameters for certain risk factors and control the weight of those factors in determining the overall risk score.

Fulfillment Management Services

1. Delivery Address Verification substantiates a customer’s deliverable address for physical shipment in domestic and international countries, leveraging domestic and international postal service databases.

2. Digital Delivery provides secure electronic delivery of digital content, for example, software, stock photography, documents, etc.

3. Digital Warehousing provides secure warehousing of a merchant’s 104 downloadable software.

Distribution Control Services

1. Policy Compliance provides real-time electronic commerce distribution control to maintain merchant **104** contractual marketing policies and distribution agreements (e.g., territory management).

2. Export Compliance enables you to control the distribution of products and services in order to comply with the U.S. Government's Export Administration Regulations, thus protecting a merchant **104** from possible export violations. Export Compliance checks lists of denied countries and multiple denied persons lists from various government agencies such as the Department of Commerce, compares order information against databases and uses geo-location technology to validate the information submitted by a customer **102**. Service provider **106** may also perform a secondary check on the transaction history of the IP address to identify any inconsistencies in ship-to or bill-to requests.

3. Digital Product Rights Management provides benefits to businesses that sell or distribute digital products over the Internet. Service provider **106** prepare digital products for electronic distribution using conventional technologies, thus allowing an intellectual property (IP) owner to issue licenses and retain rights information globally without maintaining key servers and associated infrastructure. Service provider **106** may provide the rights registry services required to issue licenses on a merchant's **104** or IP owner's behalf, issue records for reporting, and record subsequent requests for returns or reissuance of the property.

The preceding are examples of services that may be offered by a service provider **106** or utilized by a merchant **102**, in conjunction with embodiments of the invention described herein. However, services are not limited to the preceding examples.

Service Provider Functional Components

FIG. 2 is a block diagram that illustrates functional and real components utilized by a service provider **106** in a hosted electronic transaction service system that provides custom strategy specification. The components of FIG. 2 are further used in processing electronic transactions. Service provider **106** includes a transaction server **202**, a database **204** and electronic transaction services **206**.

Transaction server **202** and its elements depicted in FIG. 2 can be implemented as computer software, hardware, or a combination of software and hardware. Transaction server **202** comprises a commerce protocol stack **222**, for communicating with merchants **104** that utilize a compatible protocol stack. Commerce protocol stack **222** represents software elements and processes used to communicate transaction and other information among a service provider **106** and any number of similarly configured merchants **104**. For a non-limiting example, protocol stack **222** may comprise software elements and processes that implement SOAP.

Transaction server **202** further comprises a strategy parser for parsing strategies transmitted from a merchant **104** to, and stored at, a service provider **106**. Preferably, a strategy is created by a merchant **104** and transmitted for storage to a service provider **106** independent of transaction related information. That is, transmission of custom strategies and transmission of transaction information are, preferably, asynchronous. However, embodiments are not limited to asynchronous transmission of strategy and transaction information.

A strategy generally represents a manner in which one or more electronic transactions are processed by a service provider **106**, and actions to perform in response to service results. A strategy can include an ordered specification of services that a given merchant wants applied to electronic transactions that are associated with, or originate from, the

given merchant. A strategy describes a flow diagram of rules that comprises a logical hierarchy in which actions are distinguishable from evaluations and an order of processing is programmatically determinable. Each element of a strategy may be attributed with information that describes and documents that element, such as its name and version. Strategies can be unique to different merchants **104**. Further, a merchant **104** may create and use multiple strategies and, further, may specify the manner of application, or scheduling, of the multiple strategies.

Rules typically include literal and variable values along with arithmetic and logical operators applicable to those values. Rules evaluate to a boolean value, e.g., true or false, and a respective action to take in response to the boolean value. Actions include another rule to evaluate, a decision termination point, or an instruction to call a service.

For example, merchant **104** may use a first strategy for transactions that entail less than a specific dollar amount and may use a second strategy for transactions that entail more than the specific dollar amount. For another example, a merchant **104** may want to use different strategies for different times of the year, such as a first strategy for a period leading up to the year-end holiday buying season and a second strategy for the summer months and third strategy for the remaining time periods. For yet another example, a merchant **104** may want to test a newly created strategy and request that it only be used during the weekend or during certain times of day. The preceding are only examples of uses of multiple service strategies, and the invention is not limited to these examples.

Strategy parser **224** is not limited to any specific type of parser, and may comprise any conventional or proprietary parser that is suitable to the type of language in which strategies are defined. Generally, a parser is computer code which is capable of identifying constituent parts of data so that it can be managed by other programs or code. Parsing can include the conversion of the parts into logic that is understood by a computer. An example of a strategy parser **224** is an XML (Extensible Markup Language) parser, which parses XML documents and converts them to programming logic or a data representation, which can be further implemented as programming objects, data structures, and the like. In one embodiment, strategies are represented as XML documents, and strategy parser **224** is an XML parser. Service provider **106** (FIG. 1) can define a well-formed strategy in relation to an associated parser. For example, an XML DTD (Data Type Definition) can be used to define the structure of an XML document that embodies one or more strategies.

Once strategies are received by service provider **106**, they are stored in strategy library **242** of database **204**. Strategies may be stored in database **204** in a native format, which is retrieved and parsed when necessary, or stored in a logical format in which the strategy has already been parsed and converted into programming logic. Database **204** can be any conventional database and database management system. Database **204** comprises a strategy library **242** and an action library **244**.

Strategy library **204** stores a library of strategies generated by various merchants **104** that are clients of host service provider **106**. For example, if strategies are represented in XML format, then strategy library **204** comprises XML documents or files. Strategies may be stored in strategy library **242** of database **204**, in formats other than XML or in non-native or compressed formats.

In response to receiving transaction information from a merchant **104**, the transaction server **202** of service provider **106** accesses database **204** to retrieve a service strategy to

apply to the given transaction. Transaction server **202** then applies the services to the electronic transaction represented by the received transaction information, according to the retrieved service strategy and based on the transaction information. Transaction server **202** communicates results of the performed services to merchant **104** through use of commerce protocol stack **222**. For example, if the service being provided by service provider **106** is solely a card authorization service, then service provider **106** returns a “card authorized” message to merchant **104**. Communications from service provider **106** to merchant **104** preferably use the same protocol, such as SOAP, as the protocol in which they received the transaction information.

Action library **244** stores a library of actions that are available for specification by merchants **104**, and which are performed by a service provider **106** as part of processing electronic transactions for merchants **104**. Merchant **104** can specify service triggers to various actions in action library **244**; that is, merchant **104** can mix and match actions with services. Merchant **104** can specify a specific action to perform in response to a given service, or can specify a specific action to perform in response to a specific result of a given service. For example, a merchant **104** may specify that an action of sending an e-mail to one or more persons affiliated with the merchant **104** is performed for any transactions over a certain dollar amount that receive a fraud risk score within a specified range.

According to one embodiment, merchant **104** can specify an action that stores service results in a case management system, for subsequent review and/or manipulation. For example, a given service or combination of services may reach a certain conclusion with respect to a given transaction, whereby an indication of the result is stored in a case management system file for review by merchant **104**. Upon review, merchant **104** may decide an ultimate action to perform in response to the result stored in the case management file. For example, even though a given transaction was evaluated according to a fraud service to be a risky transaction, which is indicated in the case management system, merchant **104** may make an exception to their usual business rule and accept the transaction with knowledge that the risk factor exceeds the merchant’s usual fraud risk threshold. With the case management system, certain “flagged” transactions can be reviewed by merchant **104** on a case-by-case basis.

Action library **244** and strategy library **242** of database **204** facilitate the preceding capabilities. In one embodiment, the action library **244** contains information to link respective actions with a respective merchant **104** according to merchant customization. Alternatively, information linking actions with merchants **104** may be stored in strategy library **242** in association with one or more strategies related to the relevant merchant **104**, or may be stored elsewhere.

Electronic transaction services **206** represent one or more services that a service provider **106** provides in relation to electronic transactions. For a non-limiting example, electronic transaction services **206** can include any or all of the following: transaction authorization, payment crediting, billing, fraud screening, tax calculation, export compliance checks, delivery address verification, Internet and/or electronic mail address verification. The preceding list is not considered comprehensive, for other services could be developed and offered by a service provider **106** as part of electronic transaction services **206**.

Process for using a Hosted Electronic Transaction Service System to Process Transactions with Custom Service Strategies

FIG. 3A is a flowchart that illustrates a process for using a hosted electronic transaction service system to process merchant transactions with custom service strategies.

At block **302**, a strategy is received from a merchant. For example, a strategy is received by a service provider **106** from a merchant **104** (FIG. 1). A strategy may specify one or more services to perform in relation to one or more electronic transactions associated with the merchant. Manners in which a strategy is generated are described below in reference to a merchant **104** of FIG. 4.

In an embodiment, a strategy specifies an order in which to perform the one or more services specified in the strategy. For example, a merchant **104** (FIG. 1) may specify that a fraud screening service is performed before a payment crediting service, and after an address verification service.

Furthermore, in one embodiment, a strategy includes a conditional expression. For example, a merchant **104** (FIG. 1) may define a strategy that includes logic such as “if transaction amount is less than \$1000, then do not perform fraud screening; but if transaction amount is equal to or greater than \$1000, then perform fraud screening followed by address verification.” For another example, a merchant **104** may derive a strategy that includes logic such as “if transaction is for a specific product and the shipping address is to a specific country, then perform fraud screening and export compliance verification prior to transaction authorization, and then perform tax calculation if each of the previous services produces an acceptable result.” Any conditional expressions and logical operators or constructs can be used to generate an electronic transaction service strategy.

In one embodiment, strategies are described in XML format. For example, an application executing on a merchant **104** (FIG. 1) machine may be used to construct a service strategy, which is converted to logical code. For example, the application may be a web application residing at service provider **106** with portions that execute at merchant **104**. The code representing the strategy is converted into a document or file in XML format, and sent to a service provider **106** (FIG. 1). In turn, the service provider **106** retrieves and parses the strategy into computer programming logic that can be executed at the service provider **106** site, which aids in directing the services performed.

At block **304**, transaction information associated with an electronic transaction is received from the merchant. Transaction information can include information such as a merchant identifier, an identifier of the goods being exchanged, the value amount of the exchange, a credit card number to be applied to the exchange, and billing address of the customer. Transaction information can include any information necessary to perform a hosted service in relation to an electronic transaction.

At block **306**, the transaction to which the transaction information applies is serviced according to the strategy that was received at block **302** and based on the transaction information received at block **304**. Thus, a process for a service provider **106** (FIG. 1) to receive and apply, in relation to one or more transactions, a merchant-customized service strategy associated with a hosted suite of services offered by the electronic transaction service provider, is described.

For example, execution of block **306** includes parsing the strategy received at block **302** to form a decision structure and traversing the decision structure. Traversing the decision structure includes evaluating any conditional operators encountered in the traversal. Upon encountering a terminal

node of the decision structure, a service or action represented by the terminal node is selected at the service provider **106**. Furthermore, the transaction information received at block **304**, which may be embedded in a SOAP message, is parsed and pertinent values or parameters passed to the selected service process. A transaction server, such as transaction server **202** continues to traverse the decision structure and iterate the foregoing process as each terminal node is encountered.

FIG. **3B** is a flowchart that illustrates a process for using a hosted electronic transaction service system to process merchant transactions with custom service strategy schedules. At block **308**, scheduling information is received from the merchant **104** (FIG. **1**). For example, the scheduling information specifies a first strategy to be used to service one or more first transactions associated with the merchant **104**, and second strategy to be used to service one or more second transactions associated with the merchant **104**. For example, a first strategy could be specified to be used from 6:00 AM to 10:00 PM local time, and a second strategy could be specified to be used from 10:01 PM to 5:59 AM local time. Alternatively, a first strategy could be specified for January 2 through May 31, a second strategy for June 1 through August 31, the first strategy from September 1 through November 28, and a third strategy from November 29 through January 1. In an embodiment, the scheduling information is received in XML format via a SOAP message.

A schedule may be used to specify nested strategies. That is, one strategy can be specified to call another strategy. FIG. **10A** and FIG. **10B** are block diagrams that graphically depict nested strategies. Furthermore, one strategy can be specified to call another strategy dynamically, based on certain conditions and logic. For example, a merchant **104** may specify a global strategy that specifies a service workflow associated with its transactions. Within that global strategy the merchant **104** may further specify that, based on specific transaction information, a first nested strategy is performed instead of a second nested strategy, as depicted in FIG. **10A**. Alternatively, within the global strategy the merchant **104** may further specify that, based on a first specific result of a first nested strategy, a second nested strategy is performed, and based on a second specific result of the first nested strategy, a third nested strategy is performed, as depicted in FIG. **10B**. Hence, the ability to nest strategies within a global strategy and to include decision logic within the global strategy to specify service processing paths to take based on dynamic conditions, provides great flexibility to a merchant **104** with respect processing electronic transactions.

At block **310**, a schedule is created based on the scheduling information received at block **308**. The schedule may be reduced to computer logic representing a number of rules and conditions. Continuing with a preceding example, a condition may reference the date of the electronic transaction, with outputs from the conditions indicating which of a plurality of strategies to apply. At block **304**, transaction information associated with an electronic transaction is received from the merchant. Hence, condition inputs may comprise values or parameters extracted from the transaction information. In addition, condition inputs may comprise results of other services or strategies.

At block **312**, a strategy from the one or more strategies is selected based on the schedule created at block **310** and, possibly, the transaction information received at block **304**. Returning to an example, if the transaction date is January 28, then the first strategy is selected from the first, second and third strategies specified in the scheduling information that is received from a merchant **104** (FIG. **1**) at block **308**. Finally,

at block **306**, the electronic transaction to which the transaction information applies is serviced according to the strategy that was selected at block **312** and based on the transaction information received at block **304**. Further, if the transaction information indicates a transaction date of December 24, then the third strategy is selected based on the scheduling information received at block **308** and the transaction is serviced accordingly. For example, a fraud screening service might be absent from the third strategy and, therefore, not applied by the service provider **106** (FIG. **1**) when servicing the transaction.

Merchant Functional Components

FIG. **4** is a block diagram that illustrates functional and real components utilized by a merchant **104** for customizing a hosted electronic transaction system. Merchant **104** comprises a custom strategy user interface **402** ("user interface"), a customer interface **404** and a commerce protocol stack **406**.

User interface **402** is used by a customer or client of service provider **106** (FIG. **1**), for example, by merchant **104**. User interface **402** comprises a condition editor **422**, a scheduler **424**, and a parser **426**, and is used to build merchant-specified service strategies for associated transactions.

In an embodiment, user interface **402** is used by merchant **104** to graphically represent a service strategy. For example, a strategy can be represented as a graphical decision tree, with conditions based on transaction or other information. The nodes of such a tree represent services offered by service provider **106** (FIG. **1**) or resultant actions.

In an embodiment, user interface **402** is implemented as part of a software application executing at merchant **104**. For example, the application may be a web application residing at service provider **106** with portions that execute at merchant **104**, such as applets, scripts, common gateway interfaces, and the like. Alternatively, the application may execute at service provider **106**, and merchant **104** may access the application using a browser.

The underlying application is capable of presenting templates that represent various common or popular strategies, and of presenting graphical figures or icons that represent, for example, conditional operators, logical operators, and services for use by merchant **104** in constructing a customized service strategy. Hence, merchant **104** can easily and intuitively construct and edit custom strategies based on specific product, industry and environment variables. For example, merchant **104** may specify that an export compliance service is performed for products that are export-sensitive. Furthermore, merchant **104** can construct new strategies or edit existing strategies on demand, through user interface **402**. Thus, capabilities are provided for members of merchant **104** to quickly and easily adapt their service strategies to changing business conditions, without having to utilize information technology or computer programming assistance.

Condition editor **422** provides the capability for merchant **104** to build complex conditions as part of a service strategy. Examples of conditions are described in reference to block **302** (FIG. **3**). Condition editor **422** supports the creation of conditions or conditional statements that are created or customized by merchant **104**.

Scheduler **424** provides the capability for merchants **104** to build schedules with respect to their defined service strategies. Examples of incorporating scheduling as part of a service strategy are described in reference to block **308** of FIG. **3**. Further, schedules can be simply time or calendar based, or they can be based on conditions as specified by merchant **104** via condition editor **422**.

User interface **402** further comprises a parser **426**. Parser **426** should be similar to, or at least compatible with, strategy

parser 224 (FIG. 2) of electronic transaction service provider 106 (FIG. 1). If service provider 106 strategy parser 224 is not compatible with merchant 104 parser 426, then intermediary software can be configured to make appropriate translations and perform other actions so that a strategy transmitted by merchant 104 is usable by service provider 106. Parser 426 is used to parse strategies that are represented via user interface 402, such as a graphical decision tree, and to convert them into programming logic or a service provider-compatible format, such as XML.

Condition editor 422, scheduler 424, and parser 426 may be separate software modules or an integrated module, and may be separate from the user interface 402 application. Thus, FIG. 4 illustrates this functionality as within or part of user interface 402 as an example, and embodiments are not limited to such a configuration.

Customer interface 404 is an interface between merchant 104 and customer 102 (FIG. 1). Customer interface 404 is a facilitator of information exchange between customer 102 and merchant 104. For example, transaction-related information can be collected by merchant 104 via a conventional card reader that transmits the data to service provider 106 through the telephone network or through the Internet using a modem. For another example, information can be collected from a customer 102 through an e-commerce web page associated with a merchant 104 that is displayed on a customer 102 computer workstation, using appropriate conventional technology such as a script computer language, a common gateway interface process, Java-based applications, and the like.

Commerce protocol stack 406 is similar to commerce protocol stack 222 (FIG. 2), and is used for communicating with service providers 106 that utilize a compatible protocol stack. Commerce protocol stack 406 represents software elements and processes used to communicate transaction and other information between a merchant 104 and service provider 106. For a non-limiting example, protocol stack 406 may comprise the software elements and processes that implement SOAP. Preferably, stack 406 and stack 222 facilitate the same or compatible protocols. Otherwise, an intermediary module is used to translate one protocol used by a customer 102 to another different protocol used by a merchant 104. Process for Customizing a Hosted Electronic Transaction Service System

FIG. 5A is a flowchart that illustrates a process for customizing a hosted electronic transaction service system, from the perspective of a merchant or client of the system.

At block 502, a strategy that specifies one or more services to perform in relation to an electronic transaction is generated. As described in reference to user interface 402 (FIG. 4), a merchant 104 (FIG. 1) can construct a custom service strategy that directs a service provider 106 as to how the merchant 104 wants its electronic transactions processed; more specifically, what services to apply to the transaction and in what order. A custom service strategy can be constructed through use of fields provided by the merchant, such as bill_country, amount and shipping_method, and through use of custom fields specified by merchant 104.

In an embodiment, the strategy can be represented in a graphical decision tree format, with nodes representing services provided by service provider 106 or other actions custom-created by merchant 104. Further, the strategy can be translated into another format, such as XML, by a parser, such as parser 426 (FIG. 4).

Through use of custom strategy user interface 402, merchant 104 can construct and generate a customized service strategy related to a suite of electronic transaction services offered by a service provider 106, without having to program

a software application. Hence, people without experience in computer programming can easily create or modify a strategy that can remotely affect the behavior of the service provider 106. Furthermore, merchant 104 can request that its transactions are processed in a certain manner, without having to modify transaction information provided to the service provider 106.

FIG. 8 is an example of a custom service strategy 800 for processing electronic transactions in a hosted service environment. A strategy can include rules, plug-in calls, and other components. Plug-ins include third party software modules, routines, applications, services and actions. Further, a strategy can specify conditions within a given module. Each rule evaluates one or more fields of transaction information, or a result of another rule. In one embodiment, rules can have two results: True or False, depending on whether the transaction information meets the conditions of the rule.

Block 802 represents the beginning of the service strategy 800. Block 804 represents a rule, which would evaluate to True if the product or service associated with the electronic transaction is to ship to a designated country, which can be determined by the shipping address portion of the transaction information, or would evaluate to False if the product or service is not to ship to a designated country. Block 806 represents a decision point, which in the case of this example, is Reject, whereby the electronic transaction is rejected.

Block 808 is a module call, which calls a Shipping Method routine that is constituent to a transaction processing service (e.g., Internet Verification System) offered by the relevant service provider 106 (FIG. 1). A module can contain rules and/or plug-ins and can be shared by multiple service strategies and can be customized for different applications of a strategy. As such, a module functions like a strategy; however, according to one non-limiting implementation, a transaction cannot be accepted, rejected or reviewed within a module. Modules can be used at any node of a service strategy and can be called as the result of evaluation of a rule. Modules can be used to combine information from different sources and to distill the information into one or more fields for further evaluation.

Block 810 is a plug-in call to a plug-in routine that can be used as part of a service strategy. For example, block 810 Email Action may represent a call to a script that automatically transmits an e-mail to a merchant 104 (FIG. 1) representative for transaction review. For another example, an AddFields plug-in can add or modify fields of transaction information so that a field such as rule_code can be added to the transaction information to indicate a reason for determining that a given transaction is deemed a risky transaction.

In an embodiment in which a user interface is provided to construct and edit graphical representations of electronic transaction service strategies, components of strategy, such as service strategy 800, can be readily edited by interacting with the components via the user interface. For example, clicking on block 810 triggers display of an on-line edit window to facilitate the revision of the Email Action component of the service strategy by a merchant 104. Additionally, to add components to a service strategy, clicking on a line constituent to a strategy triggers display of an on-line data entry window to facilitate entry of a component, such as a module call, decision block, or plug-in call, by a merchant 104.

Rules can comprise joining operators to combine multiple conditions, such as AND and OR operators. Conditional parameters can be in the form of text, Boolean values, expressions and the like. Furthermore, comparison operators such as

15

equal to, not equal to, less than, greater than, less than or equal to, etc., can also be used within rules that are constituent to a service strategy.

A strategy can be created and requested for application to subsequent transactions substantially instantaneously. Thus, merchant **104** is not required to experience significant lag time between constructing a new strategy and applying the new strategy to electronic transactions. In addition, successive messages from a merchant **104** to a service provider **106**, such as SOAP messages, with each message typically being associated with a different electronic transaction, can invoke different strategies.

Multiple custom service strategies can be generated by a given merchant **104** and stored at a service provider **106**. Thus, each different merchant **104** that uses a given service provider's **106** hosted electronic transaction services can create their own portfolio of service strategies. Further, merchants **104** can designate, for example, in which situations or at what times to use different strategies from their portfolio.

At block **504**, the strategy generated at block **502** is transmitted to a host of electronic transaction services, such as service provider **106** (FIG. 1). As with the strategy receiving step associated with a service provider **106** at block **302** of FIG. 3, the strategy may be transmitted to the host as part of a SOAP, or other suitable protocol, message. Further, the strategy may be transmitted as an XML file or in another format, such as a proprietary format used by a service provider **106**.

At block **506**, transaction information associated with a specific electronic transaction is transmitted to the host, where the transaction is serviced according to the strategy generated at block **502** and the transaction information. Hence, service provider **106** will apply its services that are specified by merchant **104** in its strategy, to the electronic transaction represented by the transaction information, in the order specified by merchant **104** in the strategy. A manner in which a strategy is applied to a transaction is described in reference to block **306** of FIG. 3.

In an embodiment, block **506** includes transmitting client-specified or client-specific data, and block **502** includes generating a strategy that includes a conditional expression associated with the client-specified data. For example, a merchant **104** may use a proprietary code to represent geographic areas of a large city, where historical data shows an increased rate of fraud relating to transactions originated in an area represented by a given code. Then, a strategy is constructed using the geographic code as a condition for running a fraud screening, whereby fraud screening is only performed on transactions associated with the given code. This embodiment is not limited to the preceding example because the client-specific data and the conditional expressions thereon are limitless.

FIGS. 9A and 9B illustrate an example of a custom service strategy **900** for processing electronic transactions in a hosted service environment.

Block **904** calls a VelocityCheck function, which checks whether a single credit card number is being used with multiple addresses or expiration dates, or if a single address or phone number is being used with multiple credit cards. If any of such occurrences happens within a specified time period, VelocityCheck creates reply fields that indicate which velocity checks were triggered. Note that in one embodiment the VelocityCheck function does not automatically mark a transaction for review if a velocity check is triggered. Rules are to be included in the service strategy to interpret the reply fields of the VelocityCheck. VelocityCheck can be used anywhere in a service strategy, including as a preprocessing routine, which would have it execute at the beginning of the processing of an

16

electronic transaction, or a post-processing routine, which would have it execute at the end of the processing.

As mentioned, the strategy should include a rule or condition to evaluate and act upon the results of a VelocityCheck evaluation. For example, block **908**, Test Velocity, provides logic to strategy **900** with respect to velocity, whereby a True result causes rejection of the transaction and a False result continues the transaction evaluation process embodied in strategy **900**, to block **910** to invoke a credit card authorization service.

A hotlist enables a merchant to store known information about transactions, for example, in the case of a negative hotlist, transactions that are known to be fraudulent. Likewise, positive hotlists can be used to store information about preferred customers, so that their orders are not inadvertently rejected. Hotlists can be updated in real time, without the need to update the service strategy. Examples of information that can be stored in a hotlist include credit card numbers, email addresses, phone numbers, street addresses, and the like. Hotlists are used in a service strategy, such as strategy **900**.

Further, the strategy should also include a condition to evaluate and act upon a hotlist. For example, block **906**, Test Hotlist, provides logic to strategy **900** with respect to a hotlist, whereby a False result continues the transaction evaluation process to block **908** to test velocity in conjunction with the VelocityCheck routine run at block **904**. In an embodiment, hotlist files are XML documents, and can be transmitted to and from a merchant **104** (FIG. 1) to a service provider **106** (FIG. 1), for example, to a decision server of service provider.

Block **907** depicts a third party plug-in to which the strategy makes a call. In this example, the plug-in comprises a service or possibly a suite of services embodied in software code and offered by one other than the merchant **104** or service provider **106**.

At block **910**, a credit card authorization service is performed. If authorization is declined, then the transaction is flagged for manual review by merchant **102** or possibly by service provider **106**. If authorization is not declined, then the process continues to block **914** of FIG. 9B.

At block **914**, if an address associated with a transaction is deemed, via an address verification system, to have a "bad" address, the transaction is rejected at that point in the process. If the address is not deemed to be bad, at block **914**, the process continues to block **916** for performance of an advanced fraud screening service. If a score generated by the advanced fraud screening exceeds a threshold, which is perhaps set by merchant **104** for its transactions, then the transaction is rejected. If the score does not meet or exceed the threshold, then a credit card capture service is performed at block **918**, the transaction is accepted, and the customer's credit card is charged.

Note that suites of services can be invoked within a strategy, whether the suite is provided by service provider **106** or by a third party such as with a plug-in at block **907**. When a service suite is invoked a service strategy such as strategy **900**, performance of one or more services of the suite can be dictated by the strategy **900**. For example, strategy **900** may specify that within a given service suite, the constituent services, or checks, are to be performed in a specified order. Conditions that underlie each respective service of a service suite are evaluated to determine which branch of the strategy is to be followed in processing a given electronic transaction for a merchant.

Hence, FIGS. 9A-9B illustrate a fairly complex service strategy that can be constructed by a merchant **104** (FIG. 1) through use of embodiments described herein. The graphical depiction of strategy **900** is converted to a data format, which

can then be transmitted to a service provider **106** (FIG. **1**) host for storage and use in evaluating the merchant's electronic transactions. A given strategy constructed and applied through the embodiments can include specification of any number of stand-alone services or services that are constituent to any number of different service suites offered by a service provider. Hence, a given service strategy can span multiple service offerings of a given service provider. Furthermore, such strategies can be constructed by a merchant remote to the decision server that actually applies the strategy to transactions, such as a decision server at a service provider **106** that offers hosted electronic transaction services.

FIG. **5B** is a flowchart that illustrates a process for customizing a hosted electronic transaction service system using a schedule.

At block **502A**, one or more strategies that specify one or more services to perform in relation to electronic transactions are generated, as described above. At block **504A**, the strategies generated at block **502** are transmitted to a host of electronic transaction services, such as service provider **106** (FIG. **1**), as described above.

At block **505**, scheduling information associated with the one or more strategies is transmitted to the host. For example, the scheduling information may specify a first strategy to be used to service one or more first transactions and second strategy to be used to service one or more second transactions. The description associated with block **308** of FIG. **3** provides for examples of scheduling information and the use thereof that may be used in the process of FIG. **5B**.

At block **506**, transaction information associated with a specific electronic transaction is transmitted to the host, where the transaction is serviced according to the strategy generated at block **502** and the transaction information. Hence, service provider **106** (FIG. **1**) will apply its services that are specified by merchant **104** (FIG. **1**) in one of the strategies, to the electronic transaction represented by the transaction information. The strategy that is applied is based on the schedule specified by merchant **104**, and the order in which the one or more services are applied is specified in the strategy. A manner in which a strategy is applied to a transaction is described in reference to block **306** of FIG. **3**.

Implementation Mechanisms—Hardware Overview

FIG. **6** is a block diagram that illustrates a computer system **600** upon which an embodiment of the invention may be implemented. Computer system **600** includes a bus **602** or other communication mechanism for communicating information, and a processor **604** coupled with bus **602** for processing information. Computer system **600** also includes a main memory **606**, such as a random access memory (RAM) or other dynamic storage device, coupled to bus **602** for storing information and instructions to be executed by processor **604**. Main memory **606** also may be used for storing temporary variables or other intermediate information during execution of instructions to be executed by processor **604**. Computer system **600** further includes a read only memory (ROM) **608** or other static storage device coupled to bus **602** for storing static information and instructions for processor **604**. A storage device **610**, such as a magnetic disk or optical disk, is provided and coupled to bus **602** for storing information and instructions.

Computer system **600** may be coupled via bus **602** to a display **612**, such as a cathode ray tube (CRT), for displaying information to a computer user. An input device **614**, including alphanumeric and other keys, is coupled to bus **602** for communicating information and command selections to processor **604**. Another type of user input device is cursor control **616**, such as a mouse, a trackball, or cursor direction keys for

communicating direction information and command selections to processor **604** and for controlling cursor movement on display **612**. This input device typically has two degrees of freedom in two axes, a first axis (e.g., x) and a second axis (e.g., y), that allows the device to specify positions in a plane.

Embodiments are related to the use of computer system **600** for custom strategy specification in a hosted electronic transaction service system. According to embodiments of the invention, custom strategies are generated and/or applied by a computer system **600** in response to processor **604** executing one or more sequences of one or more instructions contained in main memory **606**. Such instructions may be read into main memory **606** from another computer-readable medium, such as storage device **610**. Execution of the sequences of instructions contained in main memory **606** causes processor **604** to perform the process steps described herein. One or more processors in a multi-processing arrangement may also be employed to execute the sequences of instructions contained in main memory **606**. In alternative embodiments, hard-wired circuitry may be used in place of or in combination with software instructions to implement the invention. Thus, embodiments of the invention are not limited to any specific combination of hardware circuitry and software.

The term "computer-readable medium" as used herein refers to any medium that participates in providing instructions to processor **604** for execution. Such a medium may take many forms, including but not limited to, non-volatile media, volatile media, and transmission media. Non-volatile media includes, for example, optical, magnetic or magneto-optical disks, such as storage device **610**. Volatile media includes dynamic memory, such as main memory **606**. Transmission media includes coaxial cables, copper wire and fiber optics, including the wires that comprise bus **602**. Transmission media can also take the form of acoustic or light waves, such as those generated during radio wave and infrared data communications.

Common forms of computer-readable media include, for example, a floppy disk, a flexible disk, hard disk, magnetic tape, or any other magnetic medium, a CD-ROM, DVD, any other optical medium, punch cards, paper tape, any other physical medium with patterns of holes, a RAM, a PROM, and EPROM, a FLASH-EPROM, any other memory chip or cartridge, a carrier wave as described hereinafter, or any other medium from which a computer can read.

Various forms of computer readable media may be involved in carrying one or more sequences of one or more instructions to processor **604** for execution. For example, the instructions may initially be carried on a magnetic disk of a remote computer. The remote computer can load the instructions into its dynamic memory and send the instructions over a telephone line using a modem. A modem local to computer system **600** can receive the data on the telephone line and use an infrared transmitter to convert the data to an infrared signal. An infrared detector coupled to bus **602** can receive the data carried in the infrared signal and place the data on bus **602**. Bus **602** carries the data to main memory **606**, from which processor **604** retrieves and executes the instructions. The instructions received by main memory **606** may optionally be stored on storage device **610** either before or after execution by processor **604**.

Computer system **600** also includes a communication interface **618** coupled to bus **602**. Communication interface **618** provides a two-way data communication coupling to a network link **620** that is connected to a local network **622**. For example, communication interface **618** may be an integrated services digital network (ISDN) card or a modem to provide a data communication connection to a corresponding type of

telephone line. As another example, communication interface **618** may be a local area network (LAN) card to provide a data communication connection to a compatible LAN. Wireless links may also be implemented. In any such implementation, communication interface **618** sends and receives electrical, electromagnetic or optical signals that carry digital data streams representing various types of information.

Network link **620** typically provides data communication through one or more networks to other data devices. For example, network link **620** may provide a connection through local network **622** to a host computer **624** or to data equipment operated by an Internet Service Provider (ISP) **626**. ISP **626** in turn provides data communication services through the worldwide packet data communication network now commonly referred to as the "Internet" **628**. Local network **622** and Internet **628** both use electrical, electromagnetic or optical signals that carry digital data streams. The signals through the various networks and the signals on network link **620** and through communication interface **618**, which carry the digital data to and from computer system **600**, are exemplary forms of carrier waves transporting the information.

Computer system **600** can send messages and receive data, including program code, through the network(s), network link **620** and communication interface **618**. In the Internet example, a server **630** might transmit a requested code for an application program through Internet **628**, ISP **626**, local network **622** and communication interface **618**. In accordance with the invention, one such downloaded application provides for custom strategy specification as described herein.

The received code may be executed by processor **604** as it is received, and/or stored in storage device **610**, or other non-volatile storage for later execution. In this manner, computer system **600** may obtain application code in the form of a carrier wave.

What is claimed is:

1. A method for customizing a hosted electronic transaction service system, the method comprising the steps of:
 - generating, at a merchant, a strategy, wherein the strategy specifies (a) one or more services for a host of electronic transaction services to perform in relation to an electronic transaction and (b) one or more actions, selected from an action library, for the host to perform during the performance of at least one service of the one or more services;
 - transmitting the strategy from the merchant to the host of the electronic transaction services; and
 - transmitting, from the merchant, to the host of the electronic transaction services, transaction information associated with an electronic transaction, wherein the electronic transaction is serviced according to the strategy and based on the transaction information and the one or actions are performed during performance of the at least one service;
 wherein the one or more services specified in the strategy comprise at least one service from a service type offered by the host and comprising (a) payment services, (b) stored value services, (c) risk management services, (d) fulfillment management services, and (e) distribution control services;
 - wherein the method is performed by a computer system.
2. The method of claim 1, wherein the step of generating a strategy includes the step of:
 - graphically representing the strategy.
3. The method of claim 1, wherein the step of generating a strategy includes the step of:
 - representing the strategy as a graphical decision tree.

4. The method of claim 1, wherein the step of generating a strategy includes the step of:
 - representing the strategy as a graphical decision tree; and
 - wherein a node of the tree represents a service provided by the host.
5. The method of claim 1, wherein the step of generating a strategy includes the step of:
 - representing the strategy as a graphical decision tree; and
 - wherein a node of the tree represents an action to be performed by the host.
6. The method of claim 1,
 - wherein the step of transmitting transaction information includes transmitting client-specified data; and
 - wherein the step of generating a strategy includes generating a strategy that includes a conditional expression associated with the client-specified data.
7. The method of claim 1, wherein the step of generating a strategy includes generating a strategy that includes a conditional expression.
8. The method of claim 1, further comprising the step of:
 - transmitting, to the host, scheduling information associated with one or more strategies, wherein the scheduling information specifies a first strategy to be used to service one or more first transactions and a second strategy to be used to service one or more second transactions.
9. The method of claim 1, wherein the step of transmitting a strategy comprises the step of:
 - transmitting a strategy that specifies a first strategy to be used to further service the electronic transaction when transaction information is in a first state and a second strategy to be used to further service the electronic transaction when the transaction information is in a second state.
10. The method of claim 1, wherein the step of transmitting a strategy comprises the step of:
 - transmitting a strategy that specifies a second strategy to be used to further service the electronic transaction when a first strategy outputs a first result and a third strategy to be used to further service the electronic transaction when the first strategy outputs a second result.
11. The method of claim 1, wherein the step of generating a strategy does not include performing computer application programming by a client of the service system.
12. The method of claim 1, wherein the step of transmitting transaction information includes transmitting transaction information as part of a Simple Object Access Protocol message.
13. The method of claim 1, wherein the strategy describes a flow of rules that comprises a logical hierarchy in which an order of processing is programmatically determinable, and wherein the rules evaluate to a boolean value and are associated with a respective action to perform in response to the boolean value.
14. A non-transitory computer-readable storage medium storing one or more sequences of instructions for customizing a hosted electronic transaction service system, which instructions, when executed by one or more processors, cause the one or more processors to perform the steps of:
 - generating, at a merchant, a strategy, wherein the strategy specifies (a) one or more services for a host of electronic transaction services to perform in relation to an electronic transaction and (b) one or more actions, selected from an action library, for the host to perform during the performance of at least one service of the one or more services;
 - transmitting the strategy from the merchant to the host of the electronic transaction services; and

21

transmitting, from the merchant, to the host of the electronic transaction services, transaction information associated with an electronic transaction, wherein the electronic transaction is serviced according to the strategy and based on the transaction information and the one or actions are performed during performance of the at least one service;

wherein the one or more services specified in the strategy comprise at least one service from a service type offered by the host and comprising (a) payment services, (b) stored value services, (c) risk management services, (d) fulfillment management services, and (e) distribution control services.

15. The non-transitory computer-readable storage medium of claim 14, wherein execution of the one or more sequences of instructions causes the one or more processors to perform the step of generating a strategy by graphically representing the strategy.

16. The non-transitory computer-readable storage medium of claim 14, wherein execution of the one or more sequences of instructions causes the one or more processors to perform the step of generating a strategy by representing the strategy as a graphical decision tree.

17. The non-transitory computer-readable storage medium of claim 14, wherein execution of the one or more sequences of instructions causes the one or more processors to perform the step of generating a strategy by carrying out the steps of: representing the strategy as a graphical decision tree; and wherein a node of the tree represents a service provided by the host.

18. The non-transitory computer-readable storage medium of claim 14, wherein execution of the one or more sequences of instructions causes the one or more processors to perform the step of generating a strategy by carrying out the step of: representing the strategy as a graphical decision tree; and wherein a node of the tree represents an action to be performed by the host.

19. The non-transitory computer-readable storage medium of claim 14, wherein the step of transmitting transaction information includes transmitting client-specified data; and wherein the step of generating a strategy includes generating a strategy that includes a conditional expression associated with the client-specified data.

20. The non-transitory computer-readable storage medium of claim 14, wherein execution of the one or more sequences of instructions causes the one or more processors to perform the step of generating a strategy by generating a strategy that includes a conditional expression.

21. The non-transitory computer-readable storage medium of claim 14, wherein execution of the one or more sequences of instructions causes the one or more processors to further perform the step of:

transmitting, to the host, scheduling information associated with one or more strategies, wherein the scheduling information specifies a first strategy to be used to service one or more first transactions and a second strategy to be used to service one or more second transactions.

22. The non-transitory computer-readable storage medium of claim 14, wherein execution of the one or more sequences of instructions causes the one or more processors to further perform the step of transmitting a strategy by performing the step of:

transmitting a strategy that specifies a first strategy to be used to further service the electronic transaction when

22

transaction information is in a first state and a second strategy to be used to further service the electronic transaction when the transaction information is in a second state.

23. The non-transitory computer-readable storage medium of claim 14, wherein execution of the one or more sequences of instructions causes the one or more processors to further perform the step of transmitting a strategy by performing the step of:

transmitting a strategy that specifies a second strategy to be used to further service the electronic transaction when a first strategy outputs a first result and a third strategy to be used to further service the electronic transaction when the first strategy outputs a second result.

24. The non-transitory computer-readable storage medium of claim 14, wherein causing the one or more processors to perform the step of generating a strategy does not include performing computer application programming by a client of the service system.

25. The non-transitory computer-readable storage medium of claim 14, wherein execution of the one or more sequences of instructions causes the one or more processors to perform the step of transmitting transaction information by transmitting transaction information as part of a Simple Object Access Protocol message.

26. The non-transitory computer-readable storage medium of claim 14, wherein the strategy describes a flow of rules that comprises a logical hierarchy in which an order of processing is programmatically determinable, and wherein the rules evaluate to a boolean value and are associated with a respective action to perform in response to the boolean value.

27. A network device that can customize a hosted electronic transaction service system, the network device comprising:

- a network interface;
- a processor coupled to the network interface and receiving network messages from the network through the network interface; and
- a computer-readable medium comprising one or more stored sequences of instructions which, when executed by the processor, cause the processor to perform the steps of:

generating, at a merchant, a strategy, wherein the strategy specifies (a) one or more services for a host of electronic transaction services to perform in relation to an electronic transaction and (b) one or more actions, selected from an action library, for the host to perform during the performance of at least one service of the one or more services;

transmitting the strategy from the merchant to the host of the electronic transaction services;

transmitting, from the merchant, to the host of the electronic transaction services, transaction information associated with an electronic transaction, wherein the electronic transaction is serviced according to the strategy and based on the transaction information and the one or actions are performed during performance of the at least one service;

wherein the one or more services specified in the strategy comprise at least one service from a service type offered by the host and comprising (a) payment services, (b) stored value services, (c) risk management services, (d) fulfillment management services, and (e) distribution control services.

UNITED STATES PATENT AND TRADEMARK OFFICE
CERTIFICATE OF CORRECTION

PATENT NO. : 8,046,271 B2
APPLICATION NO. : 11/441942
DATED : October 25, 2011
INVENTOR(S) : Michael Pe Jimenez et al.

Page 1 of 1

It is certified that error appears in the above-identified patent and that said Letters Patent is hereby corrected as shown below:

In Claim 1, Column 19, Line 53,
change "or actions" to --or more actions--

In Claim 14, Column 21, Line 6
change "or actions" to --or more actions--

In Claim 27, Column 22, Line 57
change "or actions" to --or more actions--

Signed and Sealed this
Sixth Day of March, 2012

A handwritten signature in black ink that reads "David J. Kappos". The signature is written in a cursive style with a large initial "D".

David J. Kappos
Director of the United States Patent and Trademark Office