



US007212850B2

(12) **United States Patent**
Prystowsky et al.

(10) **Patent No.:** **US 7,212,850 B2**

(45) **Date of Patent:** **May 1, 2007**

(54) **SYSTEM AND METHOD FOR PROCESSING AND PRESENTING ARRHYTHMIA INFORMATION TO FACILITATE HEART ARRHYTHMIA IDENTIFICATION AND TREATMENT**

5,513,645 A 5/1996 Jacobson et al.
5,676,153 A 10/1997 Smith et al.
5,868,680 A 2/1999 Steiner et al.
5,942,986 A 8/1999 Shabot et al.

(Continued)

(75) Inventors: **Eric N. Prystowsky**, Carmel, IN (US);
Lev Korzinov, San Diego, CA (US);
Eric Baumann, San Diego, CA (US);
Scott Denis, Murrieta, CA (US);
Manuel E. Jaime, Solana Beach, CA (US);
Justin James, San Diego, CA (US)

OTHER PUBLICATIONS

Jan Galuszka et al., "Assessment of Spectral Analysis of Heart Rate Variability in Patients With History of Atrial Fibrillation by Means of Age-Dependent Parameters", Biomed. Papers 146(2), 81-85 (2002).

Med Monitoring Systems, Inc. (Holter, Spiro, DMS, ECG, EKG, APB), <http://www.medmonitoringsystems.com/holtertestanalysis2.html>.

Massimo Santini et al., "Atrial Fibrillation: The Role of Atrial Defibrillation", Journal of Interventional Cardiac Electrophysiology 9, 229-233, 2003.

Primary Examiner—Scott M. Getzow

(74) *Attorney, Agent, or Firm*—Fish & Richardson P.C.

(73) Assignee: **CardioNet, Inc.**, San Diego, CA (US)

(*) Notice: Subject to any disclaimer, the term of this patent is extended or adjusted under 35 U.S.C. 154(b) by 411 days.

(21) Appl. No.: **10/760,122**

(57) **ABSTRACT**

(22) Filed: **Jan. 16, 2004**

(65) **Prior Publication Data**

US 2005/0113706 A1 May 26, 2005

Related U.S. Application Data

(60) Provisional application No. 60/525,386, filed on Nov. 26, 2003.

A system and method for presenting information relating to heart data can involve operations including identifying arrhythmia events in physiological data obtained for a living being, receiving human assessments of at least a portion of the arrhythmia events, determining a measure of correlation between the human assessments and the identified events, and selectively presenting information regarding the identified events based on the measure of correlation. The operations can also include identifying atrial fibrillation events in physiological data obtained for a living being, obtaining heart rate data for the living being, and presenting information regarding the heart rate data and duration of the atrial fibrillation events together with a common time scale to pictographically represent heart rate trend with atrial fibrillation burden during a defined time period.

(51) **Int. Cl.**
A61B 5/044 (2006.01)

(52) **U.S. Cl.** **600/523; 600/518**

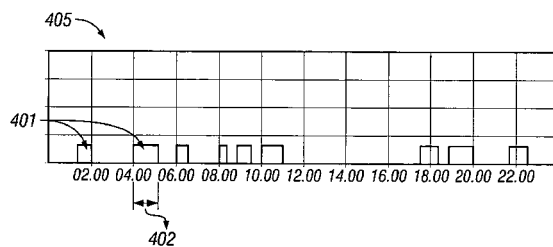
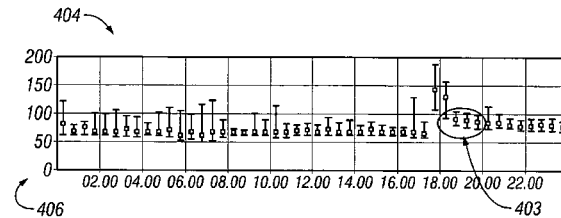
(58) **Field of Classification Search** 600/515-523
See application file for complete search history.

(56) **References Cited**

U.S. PATENT DOCUMENTS

5,217,021 A 6/1993 Steinhaus et al.

44 Claims, 6 Drawing Sheets



US 7,212,850 B2

Page 2

U.S. PATENT DOCUMENTS

6,064,906 A	5/2000	Langberg et al.	6,485,429 B2	11/2002	Forstner	
6,246,907 B1	6/2001	Lin et al.	6,583,796 B2	6/2003	Jamar et al.	
6,411,840 B1	6/2002	Bardy	6,937,887 B2 *	8/2005	Bock	600/519
6,418,340 B1	7/2002	Conley et al.	2002/0099303 A1	7/2002	Bardy	
6,449,504 B1	9/2002	Conley et al.	2002/0173727 A1	11/2002	Bardy	

* cited by examiner

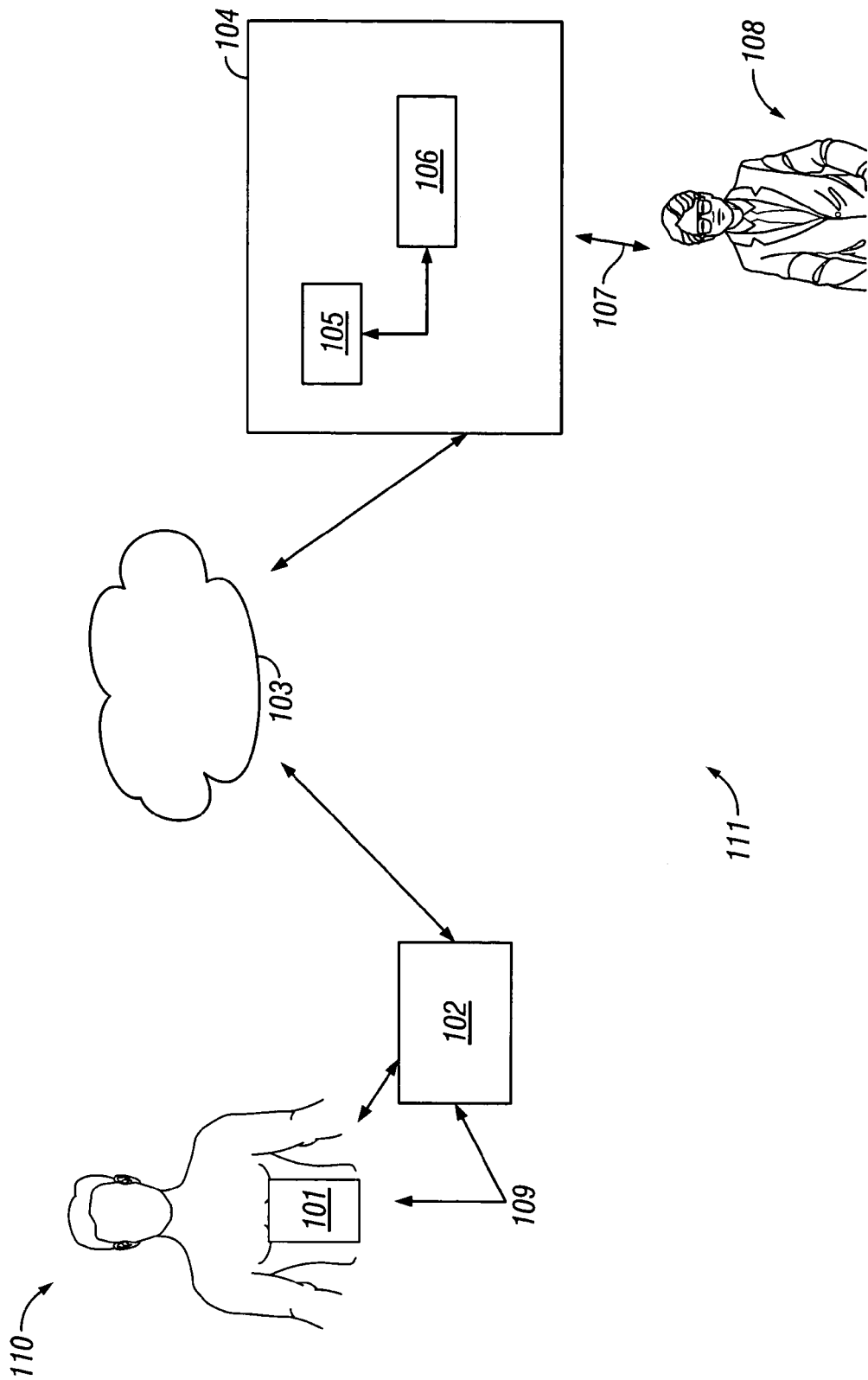


FIG. 1

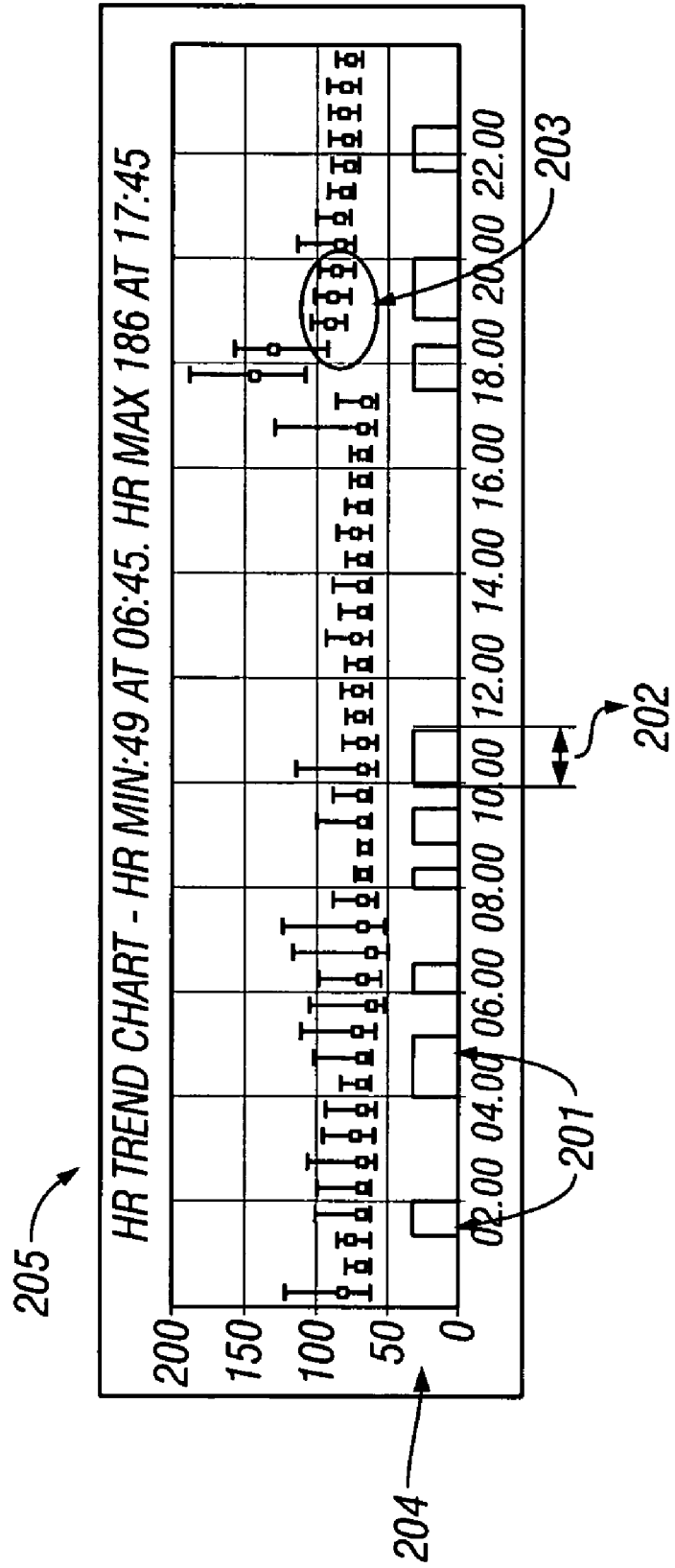


FIG. 2

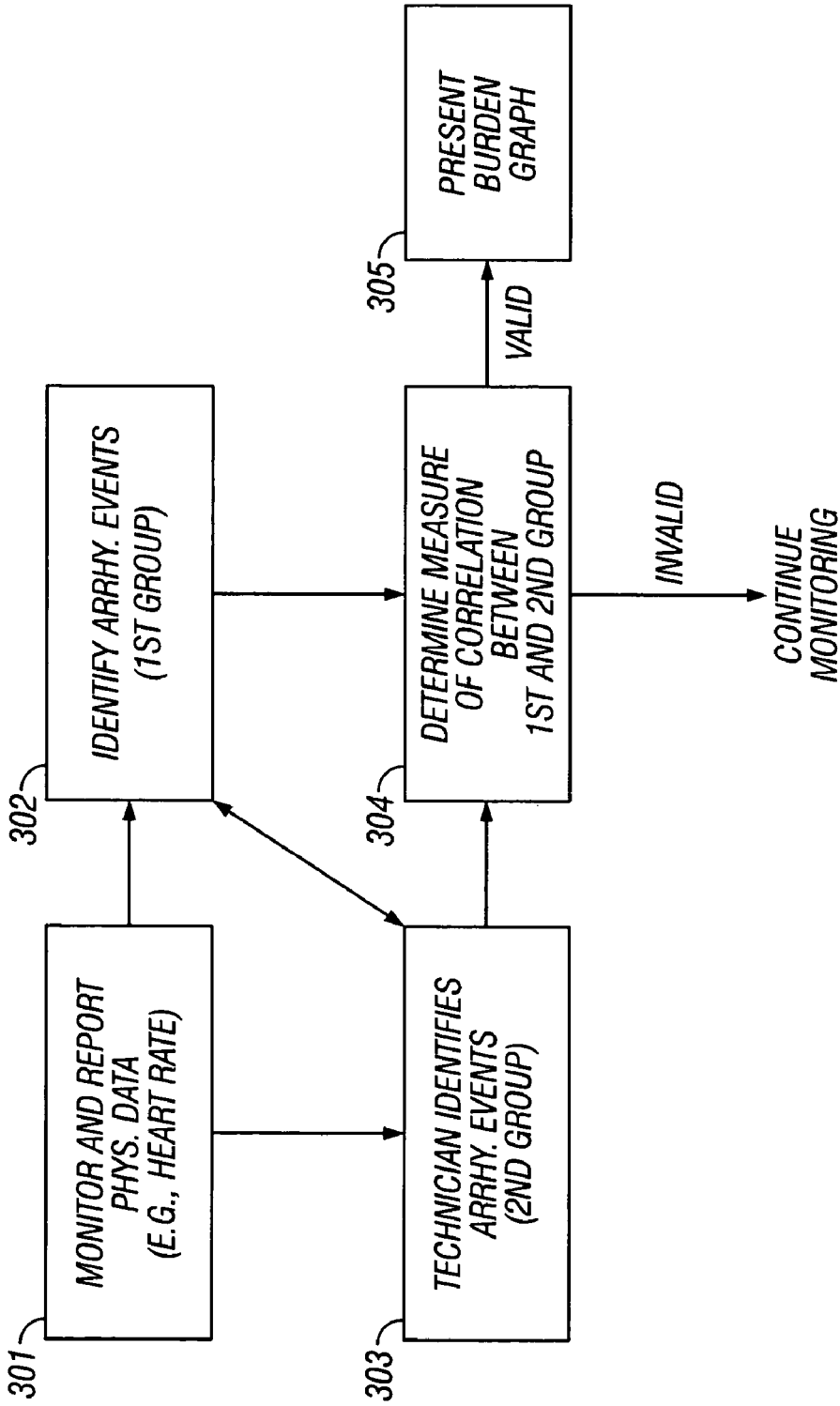


FIG. 3

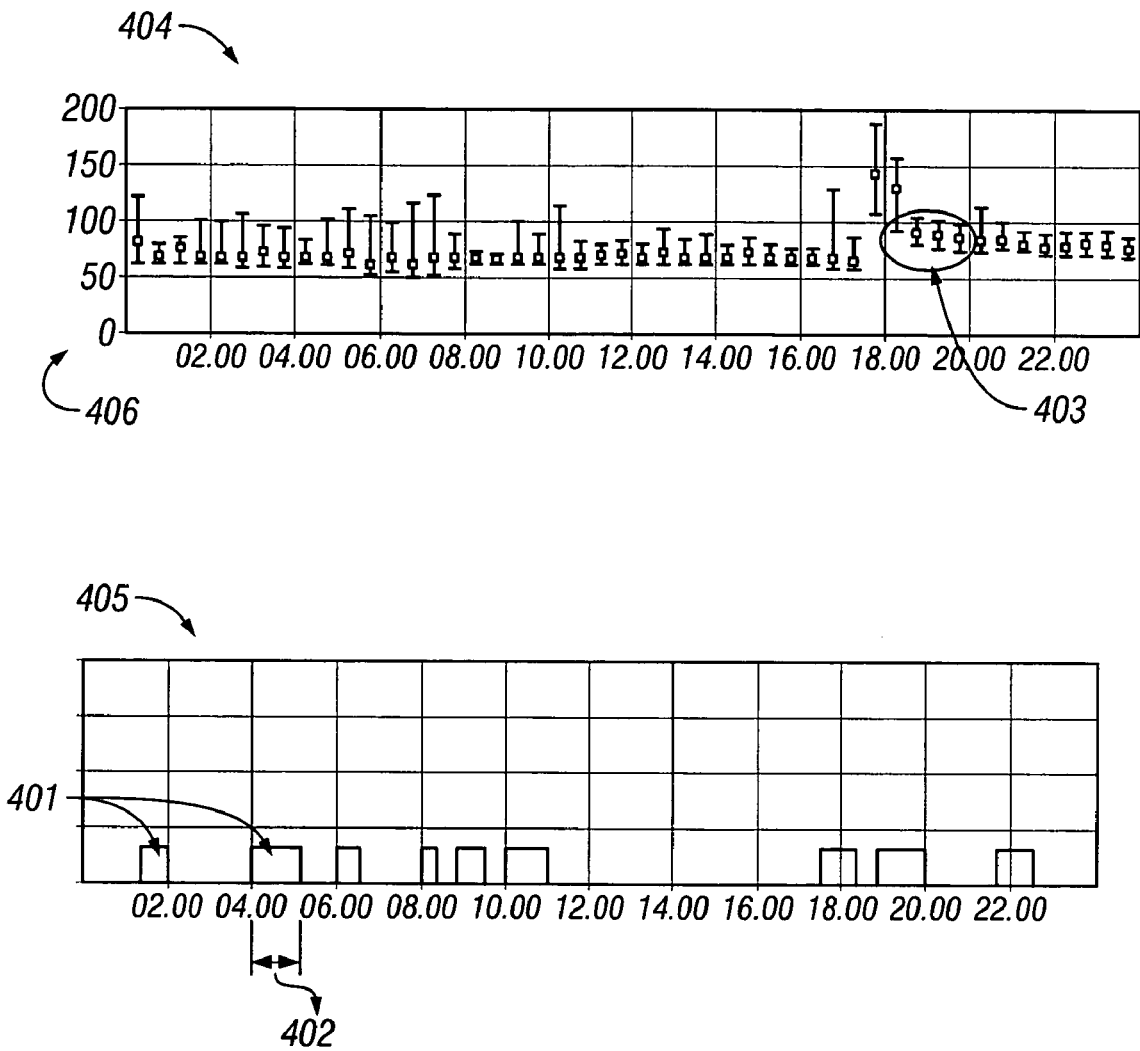


FIG. 4

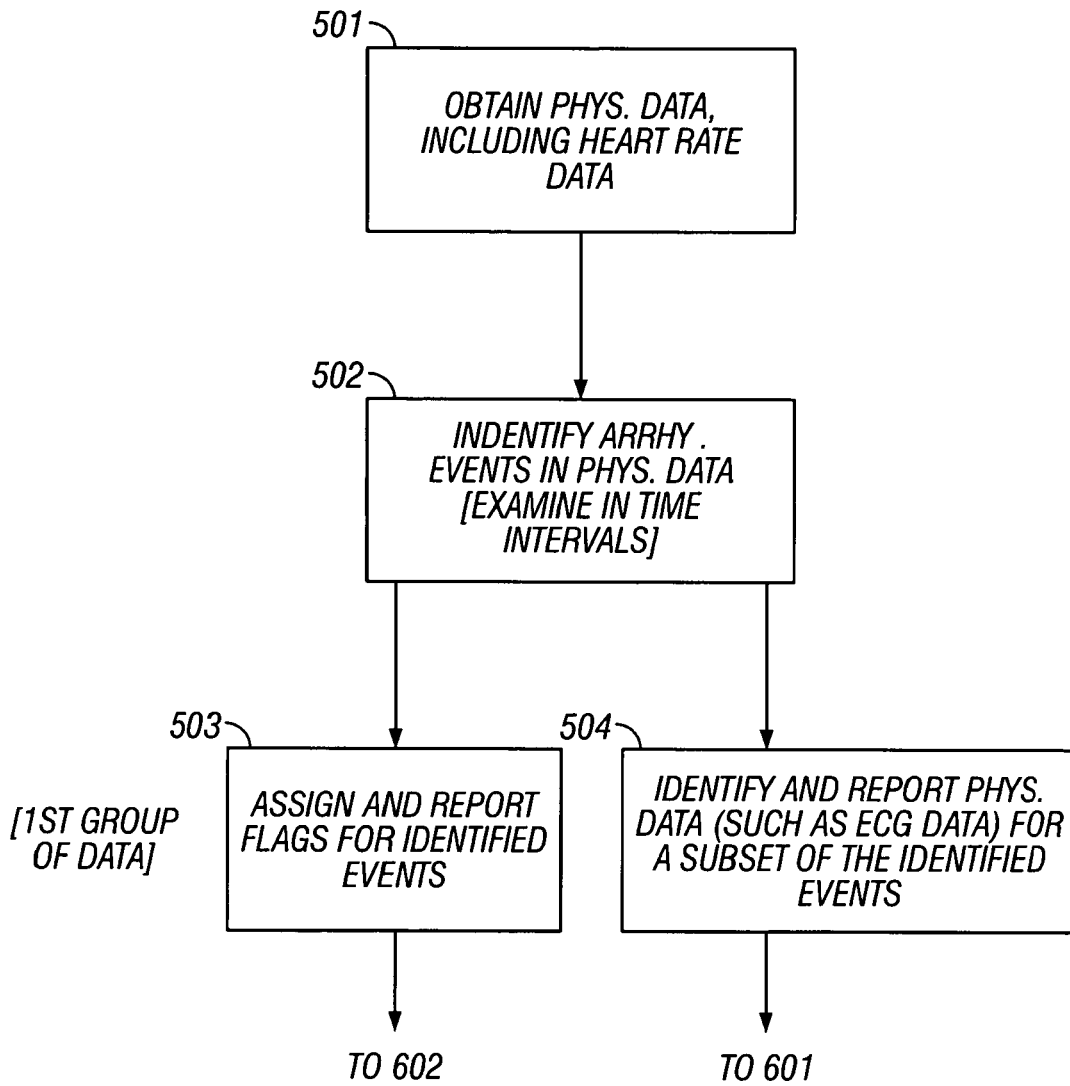


FIG. 5

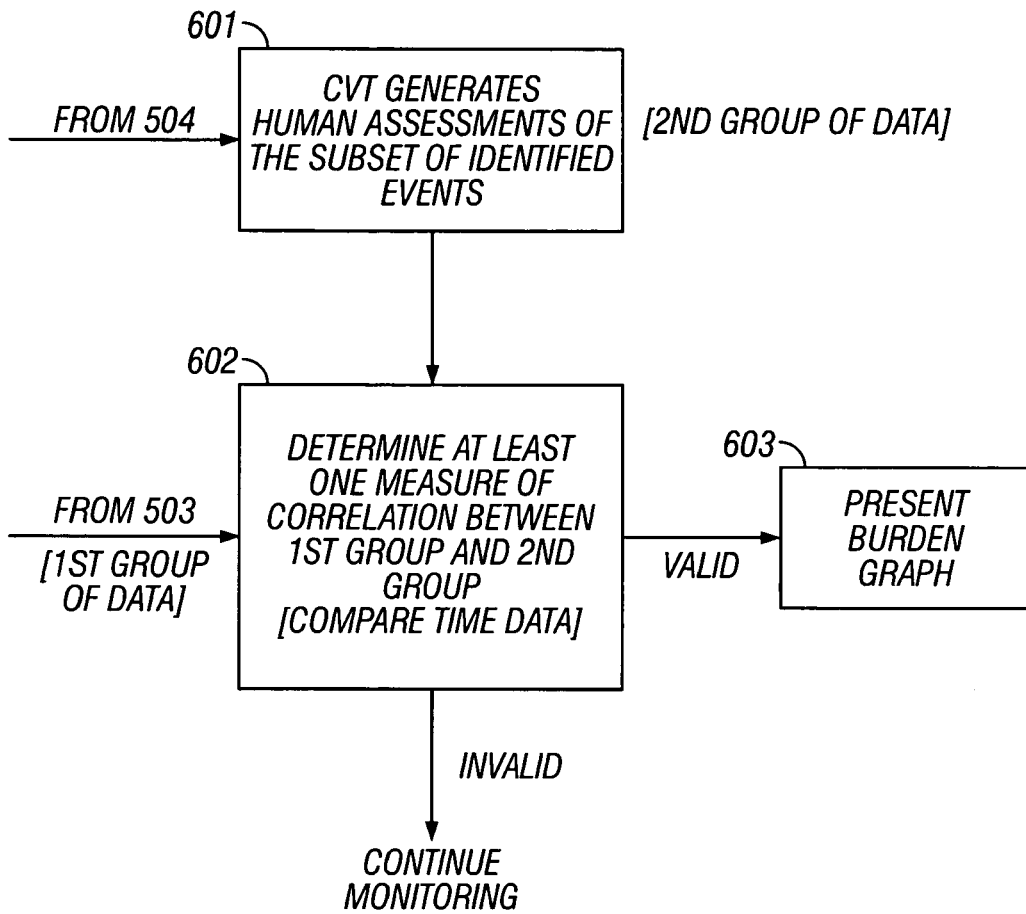


FIG. 6

1

**SYSTEM AND METHOD FOR PROCESSING
AND PRESENTING ARRHYTHMIA
INFORMATION TO FACILITATE HEART
ARRHYTHMIA IDENTIFICATION AND
TREATMENT**

CROSS REFERENCE TO RELATED
APPLICATIONS

This application claims the benefit of priority from U.S. Provisional Application entitled "Presenting Arrhythmia Information to Facilitate Heart Arrhythmia Identification and Treatment," filed Nov. 26, 2003, Application Ser. No. 60/525,386.

BACKGROUND

The present application describes systems and techniques relating to processing and presenting arrhythmia event information from physiological data, for example, selectively presenting atrial fibrillation events to a medical practitioner.

Over the years, various devices have been used for monitoring hearts in living beings. Additionally, systems have been used to collect and report on heart information obtained from patients.

SUMMARY

In general, in one aspect, a heart monitoring system collects heart data from a monitored individual and stores the data at a monitoring center. Collected data can be processed, and graphical representations of the collected information can be presented to medical practitioners to assist in treating heart arrhythmias, such as atrial fibrillation. A system and method can involve operations including identifying arrhythmia events in physiological data obtained for a living being, receiving human assessments of at least a portion of the arrhythmia events, determining a measure of correlation between the human assessments and the identified events, and selectively presenting information regarding the identified events based on the measure of correlation. The operations also can include identifying atrial fibrillation events in physiological data obtained for a living being, obtaining heart rate data for the living being, and presenting information regarding the heart rate data and duration of the atrial fibrillation events together with a common time scale to pictographically represent heart rate trend with atrial fibrillation burden during a defined time period.

One or more of the following advantages can be realized. The heart monitor can loop every twenty-four hours and can automatically transmit heart data at least every twenty-four hours. The system can automatically generate a daily graphical summary of atrial fibrillation (AF) burden for review by a medical practitioner, which can be presented effectively anywhere using one or more communication networks. The AF burden graph can be used for asymptomatic AF detection, drug therapy (rate, rhythm, anti-coagulants), pre/post ablation monitoring, and CHF (congestive heart failure) decompensation. The system can provide an overall sensitivity of 96%, a positive predictivity of over 99%, and artifact rejection of over 90%. In one implementation, the graph only displays events where AF detection is validated by a technician finding AF in over 50% of the automatically identified events.

The details of one or more embodiments are set forth in the accompanying drawings and the description below.

2

Other features and advantages will become apparent from the description, the drawings, and the claims.

DRAWING DESCRIPTIONS

FIG. 1 illustrates, according to an exemplary embodiment, a system for reporting information related to arrhythmia events.

FIG. 2 shows, according to one embodiment, a graph presenting an example of atrial fibrillation burden and heart rate trend.

FIG. 3 is a diagram illustrating, according to an exemplary embodiment, a procedure for monitoring, processing, and reporting information related to arrhythmia events.

FIG. 4 shows, according to an exemplary embodiment, one graph presenting an example of atrial fibrillation burden and one graph presenting an example of heart rate trend.

FIGS. 5 and 6 are diagrams illustrating, according to another exemplary embodiment, a procedure for monitoring, processing, and reporting information related to arrhythmia events.

DETAILED DESCRIPTION

FIG. 1 illustrates, according to one embodiment, a system for reporting information related to arrhythmia events, such as atrial fibrillation events. In this embodiment, monitoring system **109** can communicate (via devices **101** and **102**) ECG (electrocardiogram), cardiac event, and other data to monitoring center **104**. The system **109** can include, for example, an implantable medical device (IMD), such as an implantable cardiac defibrillator and an associated transmitter or pacemaker and an associated transceiver, or a monitoring device **101** that a patient **110** wears. Further, monitoring system **109** can include a monitor processing device **102** that can send standard physiological data (received from monitoring device **101**) to monitoring center **104** and that can detect arrhythmia events (such as atrial fibrillation events). In one implementation, the devices **101** and **102** are integrated into a single device. Moreover, the system **109** can be implemented using, for example, the CardioNet Mobile Cardiac Outpatient Telemetry (MCOT) device, which is commercially available and provided by CardioNet, Inc of San Diego, Calif.

Monitor processing device **102** can transmit physiological data (including data related to arrhythmia events) through a communication network **103**, which can be a local area network (LAN), a landline telephone network, a wireless network, a satellite communication network, or other suitable network to facilitate two-way communication with monitoring center **104**. Advantageously, monitoring center **104** can be located in the same location (e.g., in the same room or building) as monitoring system **109** or at some remote location.

The monitoring center **104** can include a monitoring (or display) station **105** and a processing system **106**. In one implementation, a cardiovascular technician (CVT) can use the monitoring station **105** to evaluate physiological data received from monitoring system **109**, identifying and reporting, among other things, arrhythmia events (such as atrial fibrillation events). The CVT reports these assessments of the physiological data to the processing system **106**, which also receives information related to the arrhythmia events identified by monitoring system **109**. As will be explained further below, processing system **106** analyzes this arrhythmia event data (both the human-assessed data from the CVT and the data reported by monitoring system

3

109) and determines whether to generate a graph (or other similar presentation) related to these events. In certain circumstances, the processing system will send a report related to both arrhythmia and heart rate data to, for example, a physician or other health care provider 108 via transmission path 107—which may be part of the network 103.

FIG. 3 illustrates, according to one embodiment, a procedure for monitoring, processing, and reporting arrhythmia event data (such as data associated with atrial fibrillation events). In this embodiment, the monitoring system 109 (illustrated in FIG. 1) monitors and reports physiological data (including data related to heart rate) at 301. At 302, various parts of this physiological data can be analyzed (for example, RR variability and QRS morphology) and arrhythmia events can be identified based on predefined criteria—the information relating to these events (among other possible information) constituting a first group of data. In one implementation, the monitoring system 109 identifies certain of the arrhythmia events that are urgent or representative and reports those events to both a CVT at 303 and to the processing system at 304. Alternatively, the system could simply report the events identified at 302 to the processing system. Further, at 303, a CVT, using station 105, evaluates various parts of the physiological data received from 302 and/or 301 and also identifies arrhythmia events—the information relating to these human-assessed events (among other possible information) constituting a second group of data. Here, if needed, the CVT can request additional data from monitoring system 109.

At 304, the processing system 106 analyzes both the first and second group of data, determining a measure of correlation between these groups. This process can involve, for example, determining whether a correlation measure exceeds and/or equals a predetermined correlation parameter or whether a correlation measure is less than and/or equals that parameter. If, based on the correlation analysis, the information related to the arrhythmia events is determined to be valid, then the system generates a report relating to both heart rate trend and the arrhythmia events at 305, such as the graph shown in FIG. 2 or the graphs shown in FIG. 4. If, on the other hand, there is insufficient correlation, then the system does not generate a report and monitoring continues.

To illustrate, in one implementation, every ten minutes, the monitoring system 109 transmits a “flag” if it has detected an atrial fibrillation (AF) event in the last ten minutes. In this implementation, the processing system 106 only generates a graph (or graphs) related to heart rate trend and atrial fibrillation burden—such as the graph shown in FIG. 2 or the graphs shown in FIG. 4—if more than 50% of the ten minute flags (generated at 302) match events identified by a CVT (at 303)—a correlation (with respect to the time period at issue) indicating a high positive predictivity for the identification of AF events. If this 50% threshold is not met, then the system does not generate a graph (or graphs) based on the data at issue and simply continues to process data.

The term “atrial fibrillation burden” (or more generally, “arrhythmia event burden”) refers generally to the overall amount of time that a patient is in atrial fibrillation (or arrhythmia) over a specified time period, taking into account the number and duration of episodes. Advantageously, employing pictographic presentations, such as those of FIGS. 2 and 4, a medical practitioner can see whether a

4

patient is more likely to experience an arrhythmia, such as AF, at certain times of the day, and this can affect therapeutic approaches in some cases.

FIG. 2 represents one example of how to pictographically present both heart rate trend and atrial fibrillation burden on a common time scale (to “pictographically present” such data, however, a graph is not required.). The graph 205 contains information relating to, for example, daily AF incidence and time of occurrence 201, AF duration 202, and heart rate (203 and 204). A scale 204 (in this example) indicates heart rate in average beats-per-minute and the dots and lines shown at 203 (for example) indicate values on that scale, standard deviations associated with these values, and heart rates during AF. Further, graph 205 shows heart rate data at 15 minutes and 45 minutes past the hour. Finally, in this graph, the presence of one or more AF events in a given 10-minute period is graphed as a 10-minute interval.

Like FIG. 2, FIG. 4 represents an example of how to pictographically present heart rate trend and atrial fibrillation burden on a common time scale. Although FIG. 4, unlike FIG. 2, uses two graphs, FIG. 4 presents the same information as FIG. 2. Specifically, graphs 404 and 405 contain information relating to, for example, daily AF incidence and time of occurrence 401, AF duration 402, and heart rate (403 and 406). A scale 406 (in this example) indicates heart rate in average beats-per-minute and the dots and lines shown at 403 (for example) indicate values on that scale, standard deviations associated with these values, and heart rates during AF.

FIGS. 5 and 6 are diagrams illustrating another implementation of the invention. Specifically, at 501, the system 111, employing monitoring system 109, obtains physiological data, including heart rate data. In turn, at 502, the system identifies the presence of arrhythmia events (such as AF events) in this physiological data, examining this data in time intervals. At 503, the system assigns flags indicating the presence of arrhythmia events and reports those flags—which represent a first group of data—to the processing system. Similarly, at 504, the system identifies and reports physiological data, such as ECG data, for a subset of the events identified at 502 and reported at 503. Notably, the system, in this implementation, need not report physiological data for each flag assigned at 503, but need only report data associated with the most significant events identified at 502, thereby minimizing the data sent to a CVT.

At 601, the CVT analyzes this data and reports whether arrhythmia events have occurred, thereby generating a second group of data. The processing system then determines (at 602), based on comparing time stamps associated with each group of data, at least one measure of correlation between the first group of data and the second group of data. To illustrate, if enough of the human-assessed events reported at 601 match the events reported at 503, then the system determines that the data is valid, that is, that there is a high positive predictivity for the identification of arrhythmia events. If such a determination is made, the data associated with each flag reported at 503 is pictographically presented in a form such as FIG. 2 or FIG. 4. Significantly, in this implementation, while this pictographic representation can contain all such data, the CVT need only review a subset of this data. In short, the system achieves increased accuracy in the presentation of information relating to arrhythmia events while minimizing the data that the CVT reviews.

The disclosed system and all of the functional operations described and illustrated in this specification can be implemented in digital electronic circuitry, or in computer hard-

ware, firmware, software, or in combinations of the foregoing. Apparatus can be implemented in a software product (e.g., a computer program product) tangibly embodied in a machine-readable storage device for execution by a programmable processor, and processing operations can be performed by a programmable processor executing a program of instructions to perform functions by operating on input data and generating output. Further, the system can be implemented advantageously in one or more software programs that are executable on a programmable system. This programmable system can include the following: 1) at least one programmable processor coupled to receive data and instructions from, and to transmit data and instructions to, a data storage system; 2) at least one input device; and 3) at least one output device. Moreover, each software program can be implemented in a high-level procedural or object-oriented programming language, or in assembly or machine language if desired; and in any case, the language can be a compiled or an interpreted language.

Also, suitable processors include, by way of example, both general and special purpose microprocessors. Generally, a processor will receive instructions and data from a read-only memory, a random access memory, and/or a machine-readable signal (e.g., a digital signal received through a network connection). Generally, a computer will include one or more mass storage devices for storing data files. Such devices can include magnetic disks, such as internal hard disks and removable disks, magneto-optical disks, and optical disks. Storage devices suitable for tangibly embodying software program instructions and data include all forms of non-volatile memory, including, by way of example, the following: 1) semiconductor memory devices, such as EPROM (electrically programmable read-only memory); EEPROM (electrically erasable programmable read-only memory) and flash memory devices; 2) magnetic disks such as internal hard disks and removable disks; 3) magneto-optical disks; and 4) CD-ROM disks. Any of the foregoing can be supplemented by, or incorporated in, ASICs (application-specific integrated circuits).

To provide for interaction with a user (such as the CVT), the system can be implemented on a computer system having a display device such as a monitor or LCD (liquid crystal display) screen for displaying information to the user and a keyboard and a pointing device such as a mouse or a trackball by which the user can provide input to the computer system. The computer system can be programmed to provide a graphical user interface through which computer programs interact with users.

Finally, while the foregoing system has been described in terms of particular implementations, other embodiments are within the scope of the following claims. For example, the disclosed operations can be performed in a different order and still achieve desirable results. Moreover, the system need not employ 10-minute intervals; many different time intervals are possible (as is no interval at all), including 1 minute, 30 second, and 30-minute intervals. Indeed, because time intervals are not required, the graphs of FIGS. 2 and 4 could be modified to show continuous heart rate trend (accompanied by corresponding AF data) rather than just specific instances of this trend. Further, while FIGS. 2 and 4 show examples of (among other things) pictographically presenting atrial fibrillation burden (one type of arrhythmia event burden), one could present the same or similar information for another type of arrhythmia event. In fact, one could employ both the format and procedures associated with generating FIG. 2 or FIG. 4 (or a similar figure) to

pictographically present information related to a number of different types of arrhythmia event burdens.

What is claimed is:

1. A machine-implemented method comprising:
 - identifying atrial fibrillation events in physiological data obtained for a living being;
 - obtaining heart rate data for the living being; and
 - pictographically presenting, using a common time scale, information regarding the heart rate data during a defined time period and regarding duration of atrial fibrillation activity, according to the identified atrial fibrillation events, during the defined time period such that heart rate trend is presented with atrial fibrillation burden;
- wherein presenting information comprises selectively presenting the information based on a measure of correlation between the identified atrial fibrillation events and human-assessments of at least a portion of the identified atrial fibrillation events.
2. The method of claim 1, wherein pictographically presenting information comprises presenting information regarding both incidence and duration of identified atrial fibrillation events during the defined time period.
3. The method of claim 1, wherein the heart rate data comprise information presented in beats-per-minute.
4. The method of claim 3, wherein the heart rate data comprise information presented in average beats-per-minute and comprises information regarding standard deviation of heart rate.
5. The method of claim 1, wherein pictographically presenting information comprises presenting heart rate trend juxtaposed with atrial fibrillation burden.
6. The method of claim 1, wherein pictographically presenting information comprises presenting heart rate trend and atrial fibrillation burden on the same graph.
7. The method of claim 1, wherein pictographically presenting information comprises presenting heart rate trend and atrial fibrillation burden on different graphs.
8. The method of claim 1, wherein identifying atrial fibrillation events comprises examining the physiological data in time intervals, and identifying the intervals in which at least one atrial fibrillation event has occurred, and wherein presenting information comprises displaying the identified intervals in alignment with the information regarding the heart rate data on the common time scale.
9. The method of claim 1, further comprising receiving input specifying the defined time period.
10. A machine-implemented method comprising:
 - identifying arrhythmia events in physiological data obtained for a living being, the identified arrhythmia events representing a first group of data;
 - receiving a second group of data that includes human assessments of at least a portion of the arrhythmia events;
 - determining at least one measure of correlation between the first group of data and the second group of data; and
 - if the measure of correlation matches or exceeds at least one predetermined value, selectively presenting, based on this measure of correlation, information regarding at least a portion of the arrhythmia events.
11. The method of claim 10, wherein identifying arrhythmia events comprises identifying atrial fibrillation events, and selectively presenting information comprises presenting information regarding the atrial fibrillation events and heart rate data for the living being, during a defined time period, together with a common time scale if the measure of

correlation indicates a high positive predictivity for the identification of atrial fibrillation events during the defined time period.

12. The method of claim 11, wherein receiving human assessments comprises receiving human assessments of a subset of the atrial fibrillation events, and identifying atrial fibrillation events comprises:

examining the physiological data in time intervals,

identifying the intervals in which at least one atrial fibrillation event has occurred, and

reporting the identified intervals.

13. The method of claim 12, wherein presenting the information comprises displaying the identified intervals in alignment with the information regarding the heart rate data on the common time scale.

14. The method of claim 12, further comprising identifying a subset of the atrial fibrillation events that are urgent or representative, the identified subset being the human assessed subset.

15. The method of claim 12, wherein determining a measure of correlation between the human assessments and the identified events comprises:

assessing, based on comparing at least time data, a number of the identified intervals that encompass at least a portion of human-assessed arrhythmia events.

16. The method of claim 12, wherein presenting the information regarding the heart rate data comprises displaying a heart rate trend graph including maximum heart rates in time intervals.

17. The method of claim 16, wherein each of the heart rate intervals is thirty minutes, and each of the atrial fibrillation intervals is ten minutes.

18. The method of claim 11, wherein presenting the information comprises displaying the information in two graphs using the common time scale.

19. The method of claim 11, wherein presenting the information comprises displaying the information in a single graph using the common time scale.

20. An article comprising a machine-readable medium embodying information indicative of instructions that when performed by one or more machines result in operations comprising:

identifying atrial fibrillation events in physiological data obtained for a living being;

obtaining heart rate data for the living being; and

pictographically presenting, using a common time scale, information regarding the heart rate data during a defined time period and regarding duration of atrial fibrillation activity, according to the identified atrial fibrillation events, during the defined time period such that heart rate trend is presented with atrial fibrillation burden;

wherein presenting information comprises selectively presenting the information based on a measure of correlation between the identified atrial fibrillation events and human-assessments of at least a portion of the identified atrial fibrillation events.

21. The article of claim 20, wherein identifying atrial fibrillation events comprises examining the physiological data in time intervals, and identifying the intervals in which at least one atrial fibrillation event has occurred, and wherein presenting information comprises displaying the identified intervals in alignment with the information regarding the heart rate data on the common time scale.

22. An article comprising a machine-readable medium embodying information indicative of instructions that when one formed by one or more machines result in operations comprising:

identifying arrhythmia events in physiological data obtained for a living being, the identified arrhythmia events representing a first group of data;

receiving a second group of data that includes human assessments of at least a portion of the arrhythmia events;

determining at least one measure of correlation between the first group of data and the second group of data; and if the measure of correlation matches or exceeds at least one predetermined value, selectively presenting, based on this measure of correlation, information regarding at least a portion of the arrhythmia events.

23. The article of claim 22, wherein identifying arrhythmia events comprises identifying atrial fibrillation events, and selectively presenting information comprises presenting information regarding the atrial fibrillation events and heart rate data for the living being, during a defined time period, together with a common time scale if the measure of correlation indicates a high positive predictivity for the identification of atrial fibrillation events during the defined time period.

24. The article of claim 23, wherein receiving human assessments comprises receiving human assessments of a subset of the atrial fibrillation events, and identifying atrial fibrillation events comprises:

examining the physiological data in time intervals,

identifying the intervals in which at least one atrial fibrillation event has occurred, and

reporting the identified intervals.

25. A machine-implemented method comprising:

identifying arrhythmia events in physiological data obtained for a living being, the identified arrhythmia events representing a first group of data;

receiving a second group of data that includes human assessments of at least a portion of the arrhythmia events;

determining at least one measure of correlation between the first group of data and the second group of data; and if the measure of correlation matches or is less than at least one predetermined value, selectively presenting, based on this measure of correlation, information regarding at least a portion of the arrhythmia events.

26. The method of claim 25, wherein identifying arrhythmia events comprises identifying atrial fibrillation events and selectively presenting information comprises presenting information regarding the atrial fibrillation events and heart rate data for the living being, during a defined time period, together with a common time scale if the measure of correlation indicates a high positive predictivity for the identification of atrial fibrillation events during the defined time period.

27. An article comprising a machine-readable medium embodying information indicative of instructions that when performed by one or more machines result in operations comprising:

identifying arrhythmia events in physiological data obtained for a living being, the identified arrhythmia events representing a first group of data;

receiving a second group of data that includes human assessments of at least a portion of the arrhythmia events;

determining at least one measure of correlation between the first group of data and the second group of data;

if the measure of correlation matches or is less than at least one predetermined value, selectively presenting, based on this measure of correlation, information regarding at least a portion of the arrhythmia events.

28. The article of claim 27, wherein identifying arrhythmia events comprises identifying atrial fibrillation events and selectively presenting information comprises presenting information regarding the atrial fibrillation events and heart rate data for the living being, during a defined time period, together with a common time scale if the measure of correlation indicates a high positive predictivity for the identification of atrial fibrillation events during the defined time period.

29. A system for reporting information related to arrhythmia events comprising:

a monitoring system configured to process and report physiological data for a living being and configured to identify arrhythmia events from the physiological data;

a monitoring station for receiving the physiological data from the monitoring system;

a processing system configured to receive arrhythmia information from the monitoring system and configured to receive human-assessed arrhythmia information from the monitoring station wherein the human-assessed arrhythmia information derives from at least a portion of the physiological data and wherein the processing system reports information regarding arrhythmia events if a correlation measure relating to a correlation between the arrhythmia information from the monitoring system and the human-assessed arrhythmia information matches or exceeds a predetermined value.

30. The system of claim 29, wherein the processing system is capable of presenting information regarding atrial fibrillation events and heart rate data for the living being, during a defined time period, together with a common time scale if the correlation measure indicates a high positive predictivity for the identification of atrial fibrillation events during the defined time period.

31. A system for reporting information related to arrhythmia events comprising:

a monitoring system configured to process and report physiological data, including heart rate data, for a living being and configured to identify arrhythmia events from the physiological data;

a monitoring station for receiving the physiological data from the monitoring system;

a processing system configured to receive arrhythmia information from the monitoring system and configured to receive human-assessed arrhythmia information from the monitoring station wherein the human-assessed arrhythmia information derives from at least a portion of the physiological data and wherein the processing system is capable of pictographically presenting, using a common time scale, information regarding the heart rate data during a defined time period and regarding duration of arrhythmia event activity, according to the identified arrhythmia events, during the defined time period such that heart rate trend is presented with arrhythmia event burden.

32. The system of claim 31 wherein the monitoring system is capable of examining the physiological data in time intervals and identifying the intervals in which at least one atrial fibrillation event has occurred and wherein the processing system is capable of displaying the identified intervals in alignment with the information regarding the heart rate data on the common time scale.

33. A system for reporting information related to arrhythmia events comprising:

monitoring means for processing and reporting physiological data, including heart, rate data, for a living being and for identifying arrhythmia events from the physiological data;

display means for receiving the physiological data from the monitoring means and for displaying the physiological data to a human user;

processing means for receiving arrhythmia information from the monitoring system and for receiving human-assessed arrhythmia information from the display means wherein the human-assessed arrhythmia information derives from at least a portion of the physiological data and wherein the processing means is capable of pictographically presenting, using a common time scale, information regarding the heart rate data during a defined time period and regarding duration of arrhythmia event activity, according to the identified arrhythmia events, during the defined time period such that heart rate trend is presented with arrhythmia event burden.

34. The system of claim 33 wherein the monitoring means is capable of examining the physiological data in time intervals and identifying the intervals in which at least one atrial fibrillation event has occurred and wherein the processing means is capable of displaying the identified intervals in alignment with the information regarding the heart rate data on the common time scale.

35. A machine implemented method comprising:

obtaining heart rate data for a living being;

identifying atrial fibrillation events in physiological data obtained for the living being, the identified atrial fibrillation events representing a first group of data, and wherein identifying atrial fibrillation events includes examining the physiological data in time intervals and identifying the intervals in which at least one atrial fibrillation event has occurred;

receiving a second group of data that includes human assessments of at least a portion of the atrial fibrillation events;

determining at least one measure of correlation between the first group of data and the second group of data, wherein determining at least one measure of correlation includes assessing, based on comparing at least time data, a number of the identified intervals that encompass at least a portion of the human-assessed atrial fibrillation events;

if the measure of correlation matches or exceeds at least one predetermined value, pictographically presenting, using a common time scale, information regarding the heart rate data during a defined time period and regarding duration of atrial fibrillation activity, according to the identified atrial fibrillation events, during the defined time period such that heart rate trend is juxtaposed with atrial fibrillation burden and wherein pictographically presenting includes displaying the identified intervals in alignment with the information regarding the heart rate data on the common time scale.

36. The method of claim 35, wherein pictographically presenting comprises presenting information regarding the atrial fibrillation events and heart rate data for the living being, during a defined time period, together with a common time scale if the measure of correlation indicates a high positive predictivity for the identification of atrial fibrillation events during the defined time period.

11

37. An apparatus comprising:
 means for identifying atrial fibrillation events in physiological data obtained for a living being;
 means for obtaining heart rate data for the living being;
 and
 means for pictographically presenting, using a common time scale, information regarding the heart rate data during a defined time period and regarding duration of atrial fibrillation activity, according to the identified atrial fibrillation events, during the defined time period such that heart rate trend is presented with atrial fibrillation burden;
 wherein the means for pictographically presenting information comprises means for selectively presenting the information based on a measure of correlation between the identified atrial fibrillation events and human-assessments of at least a portion of the identified atrial fibrillation events.

38. The apparatus of claim 37, wherein the means for pictographically presenting is capable of presenting information regarding the atrial fibrillation events and heart rate data for the living being, during a defined time period, together with a common time scale if the measure of correlation indicates a high positive predictivity for the identification of atrial fibrillation events during the defined time period.

39. An apparatus comprising:
 means for identifying arrhythmia events in physiological data obtained for a living being, the identified arrhythmia events representing a first group of data;
 means for receiving a second group of data that includes human assessments of at least a portion of the arrhythmia events;
 means for determining at least one measure of correlation between the first group of data and the second group of data;
 means for selectively presenting, based on this measure of correlation, information regarding at least a portion of the arrhythmia events if the measure of correlation matches or exceeds at least one predetermined value.

40. The apparatus of claim 39, wherein the arrhythmia events comprise atrial fibrillation events and wherein the means for selectively presenting is capable of presenting information regarding the atrial fibrillation events and heart rate data for the living being, during a defined time period, together with a common time scale if the measure of correlation indicates a high positive predictivity for the identification of atrial fibrillation events during the defined time period.

41. A machine implemented method comprising:
 obtaining heart, rate data for a living being;
 identifying arrhythmia events in physiological data obtained for the living being, the identified arrhythmia events representing a first group of data, and wherein identifying arrhythmia events includes examining the physiological data in time intervals and identifying the intervals in which at least one arrhythmia events event has occurred;

12

receiving a second group of data that includes human assessments of at least a portion of the arrhythmia events;

determining at least one measure of correlation between the first group of data and the second group of data, wherein determining at least one measure of correlation includes assessing, based on comparing at least time data, a number of the identified intervals that encompass at least a portion of the human-assessed arrhythmia events;

if the measure of correlation matches or exceeds at least one predetermined value, pictographically presenting, using a common time scale, information regarding the heart rate data during a defined time period and regarding duration of arrhythmia events activity, according to the identified arrhythmia events, during the defined time period such that heart rate trend is juxtaposed with arrhythmia event burden and wherein pictographically presenting includes displaying the identified intervals in alignment with the information regarding the heart rate data on the common time scale.

42. The method of claim 41, wherein pictographically presenting comprises presenting information regarding the arrhythmia events and heart rate data for the living being, during a defined time period, together with a common time scale if the measure of correlation indicates a high positive predictivity for the identification of arrhythmia events during the defined time period.

43. A machine-implemented method comprising:
 identifying arrhythmia events in physiological data obtained for a living being, the identified arrhythmia events representing a first group of data;
 receiving a second group of data that includes human assessments of at least a portion of the arrhythmia events;
 determining at least one measure of correlation between the first group of data and the second group of data; and
 if the measure of correlation matches or exceeds at least one predetermined value, selectively presenting, based on this measure of correlation, information regarding at least a portion of the identified arrhythmia events and wherein selectively presenting information comprises presenting information regarding the identified arrhythmia events and heart rate data for the living being, during a defined time period, together with a common time scale if the measure of correlation indicates a high positive predictivity for the identification of arrhythmia events during the defined time period.

44. The method of claim 43, wherein receiving human assessments comprises receiving human assessments of a subset of the identified arrhythmia events, and identifying arrhythmia events comprises:

examining the physiological data in time intervals,
 identifying the intervals in which at least one identified arrhythmia event has occurred, and
 reporting the identified intervals.

* * * * *