



US006699037B2

(12) **United States Patent**
Chishti et al.(10) **Patent No.: US 6,699,037 B2**
(45) **Date of Patent: *Mar. 2, 2004**(54) **METHOD AND SYSTEM FOR
INCREMENTALLY MOVING TEETH**(75) Inventors: **Muhammad Chishti**, Sunnyvale, CA
(US); **Kelsey Wirth**, Palo Alto, CA
(US)(73) Assignee: **Align Technology, Inc.**, Santa Clara,
CA (US)(*) Notice: Subject to any disclaimer, the term of this
patent is extended or adjusted under 35
U.S.C. 154(b) by 0 days.This patent is subject to a terminal dis-
claimer.

3,600,808 A	8/1971	Reeve
3,660,900 A	5/1972	Andrews
3,683,502 A	8/1972	Wallshein
3,860,803 A	1/1975	Levine
3,922,786 A	12/1975	Lavin
3,950,851 A	4/1976	Bergersen
4,253,828 A	3/1981	Coles et al.
4,324,546 A	4/1982	Heitlinger et al.
4,324,547 A	4/1982	Arcan et al.
4,348,178 A	* 9/1982	Kurz 433/6

(List continued on next page.)

FOREIGN PATENT DOCUMENTS

FR	2369828	6/1978
WO	WO 94/10935	5/1994
WO	WO 98/32394	7/1998
WO	WO 98/58596	7/1998

OTHER PUBLICATIONS

Andrews, "The Six Keys to Optimal Occlusion" *Straight
Wire*, Chapter 3 pp 13-24.

(List continued on next page.)

Primary Examiner—John J. Wilson

(74) Attorney, Agent, or Firm—Townsend and Townsend
and Crew LLP; Bao Tran, Esq.(57) **ABSTRACT**

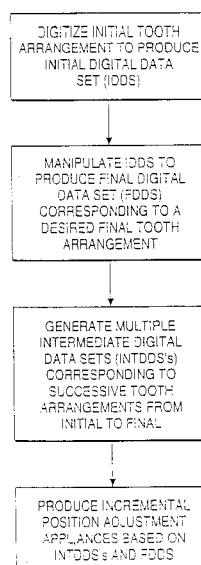
A system for repositioning teeth comprises a plurality of individual appliances. The appliances are configured to be placed successively on the patient's teeth and to incrementally reposition the teeth from an initial tooth arrangement, through a plurality of intermediate tooth arrangements, and to a final tooth arrangement. The system of appliances is usually configured at the outset of treatment so that the patient may progress through treatment without the need to have the treating professional perform each successive step in the procedure.

(21) Appl. No.: **09/791,650**(22) Filed: **Feb. 21, 2001**(65) **Prior Publication Data**

US 2001/0009753 A1 Jul. 26, 2001

Related U.S. Application Data(60) Continuation of application No. 09/298,268, filed on Apr.
23, 1999, now Pat. No. 6,217,325, which is a division of
application No. 08/947,080, filed on Oct. 8, 1997, now Pat.
No. 5,975,893.(60) Provisional application No. 60/050,342, filed on Jun. 20,
1997.(51) **Int. Cl.**⁷ **A61C 3/00**(52) **U.S. Cl.** **433/24**(58) **Field of Search** 433/24, 8, 20(56) **References Cited****U.S. PATENT DOCUMENTS**

3,407,500 A 10/1968 Kesling

21 Claims, 9 Drawing Sheets

U.S. PATENT DOCUMENTS

4,500,294 A 2/1985 Lewis
 4,504,225 A 3/1985 Yoshii
 4,505,673 A 3/1985 Yoshii
 4,526,540 A 7/1985 Dellinger
 4,575,330 A * 3/1986 Hull 425/174.4
 4,591,341 A 5/1986 Andrews
 4,609,349 A 9/1986 Cain
 4,664,626 A 5/1987 Kesling
 4,676,747 A 6/1987 Kesling
 4,755,139 A 7/1988 Abbatte et al.
 4,793,803 A 12/1988 Martz
 4,798,534 A 1/1989 Breads
 4,836,778 A 6/1989 Baumrind et al.
 4,837,732 A 6/1989 Brandestini et al.
 4,850,865 A 7/1989 Napolitano
 4,856,991 A 8/1989 Breads et al.
 4,877,398 A 10/1989 Kesling
 4,880,380 A 11/1989 Martz
 4,936,862 A 6/1990 Walker et al.
 4,941,826 A 7/1990 Loran et al.
 4,983,334 A 1/1991 Adell
 5,011,405 A 4/1991 Lemchen
 5,017,133 A 5/1991 Miura
 5,035,613 A 7/1991 Breads et al.
 5,055,039 A 10/1991 Abatte et al.
 5,059,118 A 10/1991 Breads et al.
 5,100,316 A 3/1992 Wildman
 5,125,832 A 6/1992 Kesling
 5,139,419 A 8/1992 Andreiko et al.
 5,145,364 A 9/1992 Martz et al.
 5,186,623 A 2/1993 Breads et al.
 5,273,429 A 12/1993 Rekow et al.
 5,338,198 A 8/1994 Wu et al.
 5,340,309 A 8/1994 Robertson
 5,342,202 A 8/1994 Deshayes
 5,367,478 A 11/1994 Hattori
 5,368,478 A 11/1994 Andreiko et al.
 5,382,164 A 1/1995 Stern
 5,395,238 A 3/1995 Andreiko et al.
 5,431,562 A 7/1995 Andreiko et al.
 5,447,432 A 9/1995 Andreiko et al.
 5,452,219 A 9/1995 Dehoff et al.
 5,454,717 A 10/1995 Andreiko et al.
 5,456,600 A 10/1995 Andreiko et al.
 5,474,448 A 12/1995 Andreiko et al.
 5,528,735 A 6/1996 Strasnick et al.
 5,533,895 A 7/1996 Andreiko et al.
 5,542,842 A 8/1996 Andreiko et al.
 5,549,476 A 8/1996 Stern
 5,587,912 A 12/1996 Anderson et al.
 5,605,459 A 2/1997 Kuroda et al.
 5,607,305 A 3/1997 Andersson et al.
 5,645,420 A 7/1997 Bergersen
 5,645,421 A 7/1997 Slootsky
 5,683,243 A 11/1997 Andreiko et al.
 5,692,894 A 12/1997 Schwartz et al.
 5,725,376 A 3/1998 Poirier
 5,725,378 A 3/1998 Wang
 5,800,174 A 9/1998 Andersson
 5,866,058 A 2/1999 Batchelder et al.
 5,879,158 A 3/1999 Doyle et al.
 5,880,961 A 3/1999 Crump
 5,957,686 A 9/1999 Anthony
 5,964,587 A 10/1999 Sato
 5,971,754 A 10/1999 Sondhi et al.
 5,975,893 A 11/1999 Chisti et al.
 6,044,309 A 3/2000 Honda
 6,049,743 A 4/2000 Baba
 6,123,544 A 9/2000 Cleary
 6,183,248 B1 2/2001 Chishti et al.

6,190,165 B1 2/2001 Andreiko et al.
 6,217,334 B1 4/2001 Hultgren

OTHER PUBLICATIONS

Biostar Opeation & Training Manual. Great Lakes Orthodontics, Ltd. 199 Fire Tower Drive, Tonawanda, New York. 14150-5890. 20 pages total.
 Chiappone, "Constructing the gnathologic setup and positioner" *J. Clin. Orthod.* (1980) 14:121-133.
 Cottingham, "Gnathologic clear plastic positioner" *Am. J. Orthod.* (1969) 55:23-31.
 Cureton, "Correcting malaligned mandibular incisors with removable retainers" *J. Clin. Orthod.* (1996) 30:390-395.
 Dent-X posted at <http://www.dent-x.com/DentSim.htm> Sep. 24, 1998, 6 pages ttoal.
 Elsasser, "Some observations on the history and uses of the Kesling positioner" *Am. J. Orthod.* (1950) 36:368-374.
 Kamada et al., "Case reports on tooth positioner using LTV vinyl silicone rubber and some case reports" *J. Nihon University School of Dentistry* (1982) 24(1):1-27.
 Kamada et al., "Construction of tooth positioners with LTV vinyl silicone rubber and some case reports" *J. Nihon University School of Dentistry* (1982) 24(1):1-27.
 Kesling, "Coordinating the predetermined pattern and tooth positioner with conventional treatment" *Am. J. Orthod. Oral. Surg.* (1946) 32:285-293.
 Kesling, "The philosophy of the tooth positioning appliance" *Am. J. Orthod. Oral. Surg.* (1945) 31(6):297-304.
 Kleeman et al., "The speed positioner" *J. Clin. Orthod.* (1996) 30:673-680.
 Kunii et al., "Articulation Simulation for an Intelligent Dental Care System" *Displays* (1994) 15:181-188.
 Kuroda et al., "Three-dimensional dental cast analyzing system using laser scanning" *Am. J. Orthod. Dentofac. Orthop.* (1996) 110:365-369.
 Nahoum et al., "The vacuum formed dental contour appliance" *The New York State Dental Journal* (1964) 30(9):385-390.
Nippon Dental Review "New orthodontic device—dynamic positioner (D.P.)—I. Approach to the proposal of D.P. and transparent silicone rubber" (1980) 452:61-74.
Nippon Dental Review "New orthodontic device—dynamic positioner (D.P.)—II. Practical application and construction of D.P." (1980) 454:107-130.
Nippon Dental Review "New orthodontic device—dynamic positioner (D.P.)—III. Case reports fo reversed occlusion" (1980) 457:146-164.
Nippon Dental Review "New orthodontic device—dynamic positioner (D.P.)—Case reports of reversed occlusion" (1980) 458:112-129.
 Nishiyama et al., "A new construction of tooth repositioner by LTV vinyl silicone rubber" *J. Nihon University School of Dentistry* (1977) 19(2):93-102.
 Cardinal Industrial Finishes, Powder Coatings information posted at <http://www.cardinalpaint.com> on Aug. 25, 2000, 2 pages total.
 Proffit et al, "Contemporary Orthodontics" Second Edition, Chapter 15, pp. 470-533.

Raintree Essix™ & ARS Materials, Inc., Raintree Essix™ Technical Magazine Table of Contents and Essix™ Applications, <http://www.essix.com/magazine/default.html> (Aug. 13, 1997) 7 pages total.

Richmond et al., "The development of the PAR Index (Peer Assessment Rating): reliability and validity" *European Journal of Orthodontics* (1992) 14:125-139.

Schroeder et al., Eds. *The Visual Toolkit*, Prentice Hall PTR, New Jersey (1998) Chapters 6, 8, and 9 (pp. 153-210, 309-354, and 355-428, respectively).

Shilliday, "Minimizing finishing problems with the mini-positioner" *Am. J. Orthod.* (1971) 59:596-599.

Warunek et al., "Clinical use of silicone elastomer appliances" *JCO* (1989) XXIII(10):694-700.

Warunek et al., "Physical and mechanical properties of elastomers in orthodontic positioners" *Am. J. Orthod. Dentofac. Orthop.* (1989) 95:388-400.

Wells, "Application of the positioner appliance in orthodontic treatment" *Am. J. Orthodont.* (1970) 58:351-366.

* cited by examiner

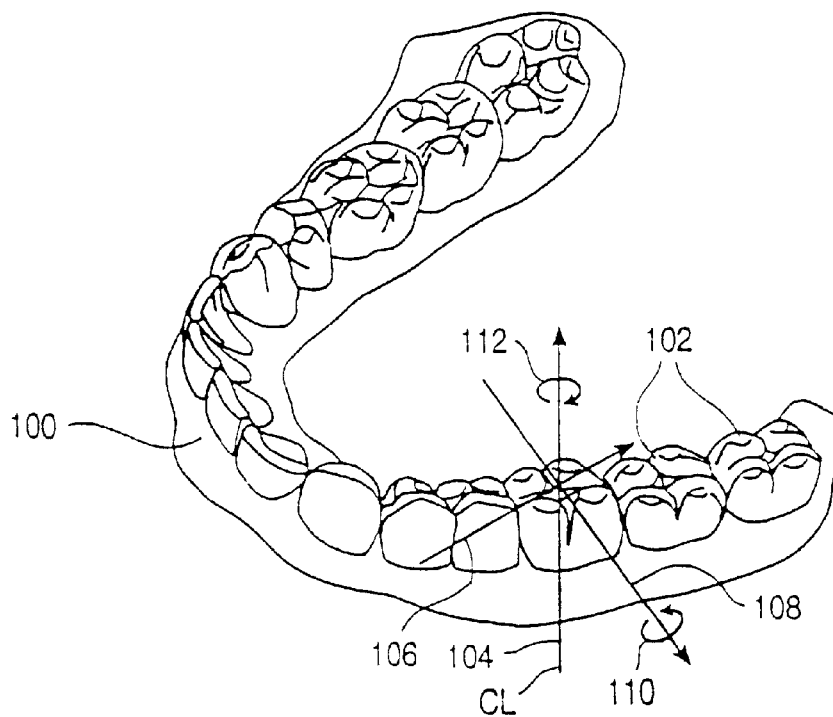


FIG. 1A

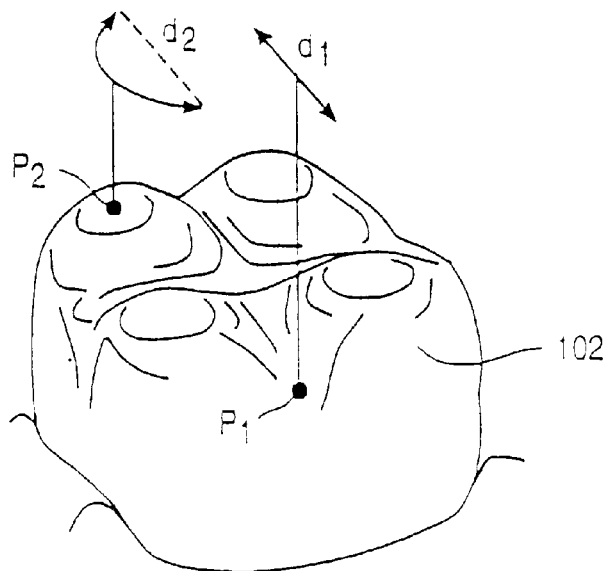


FIG. 1B

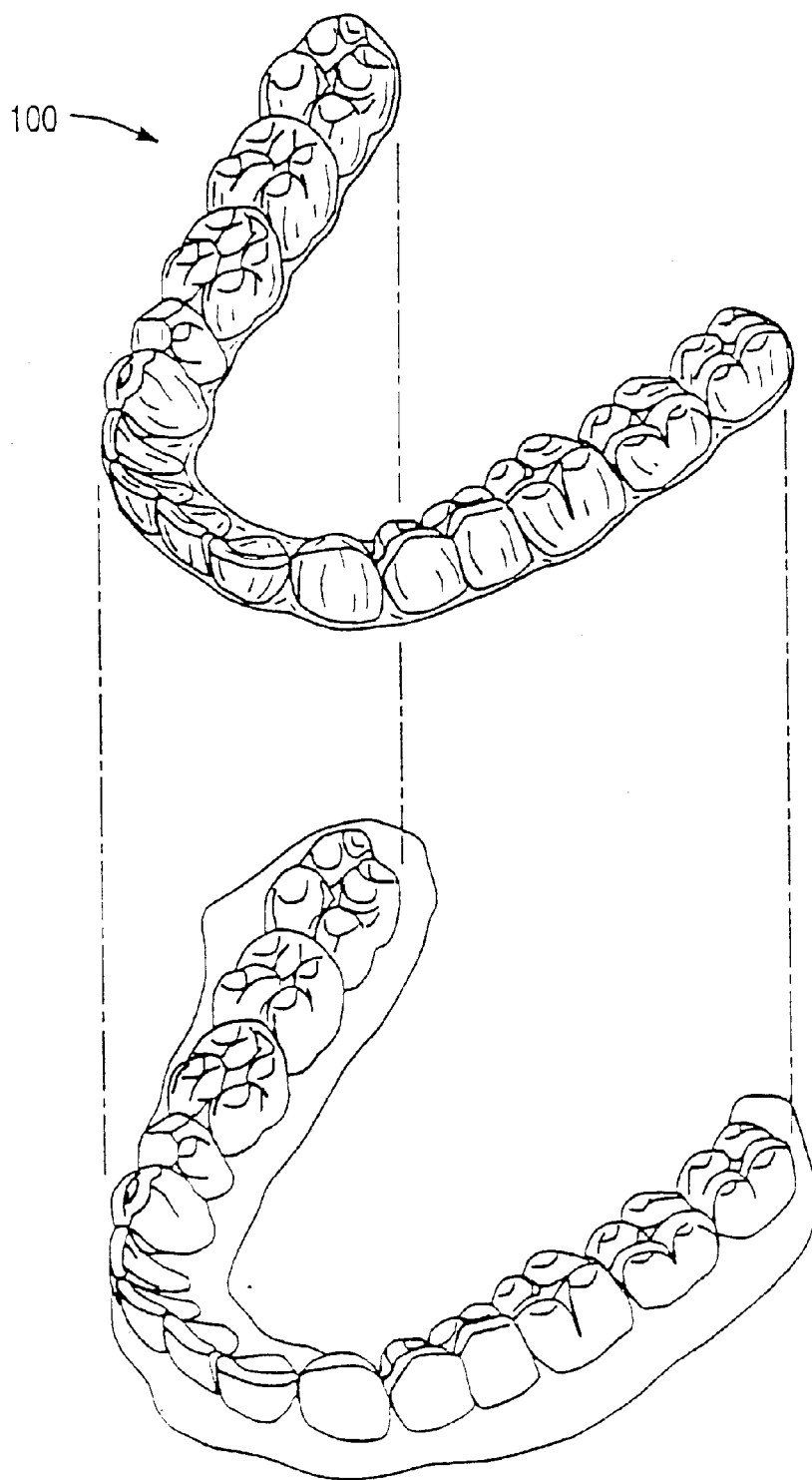


FIG. 1C

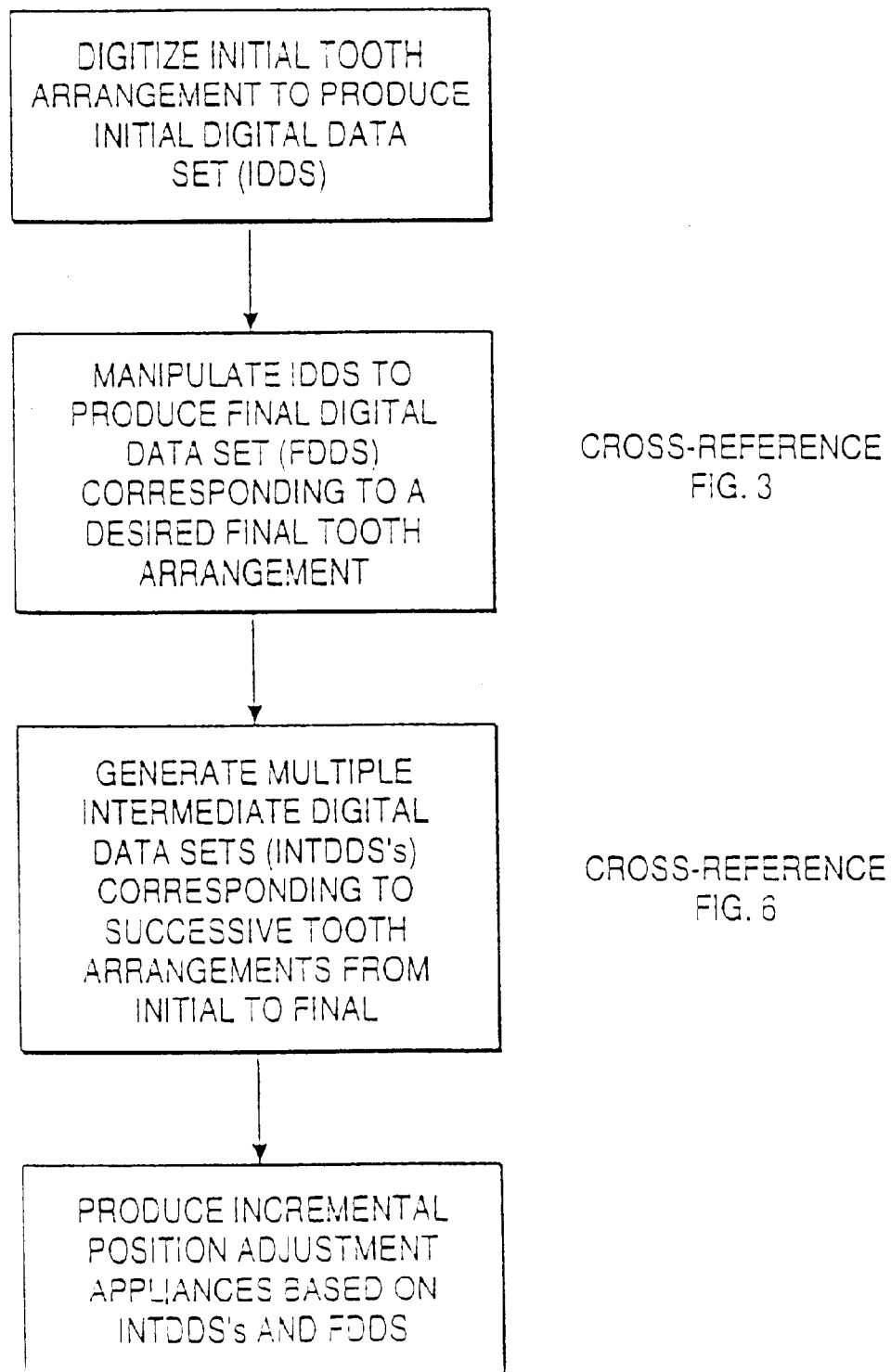


FIG. 2

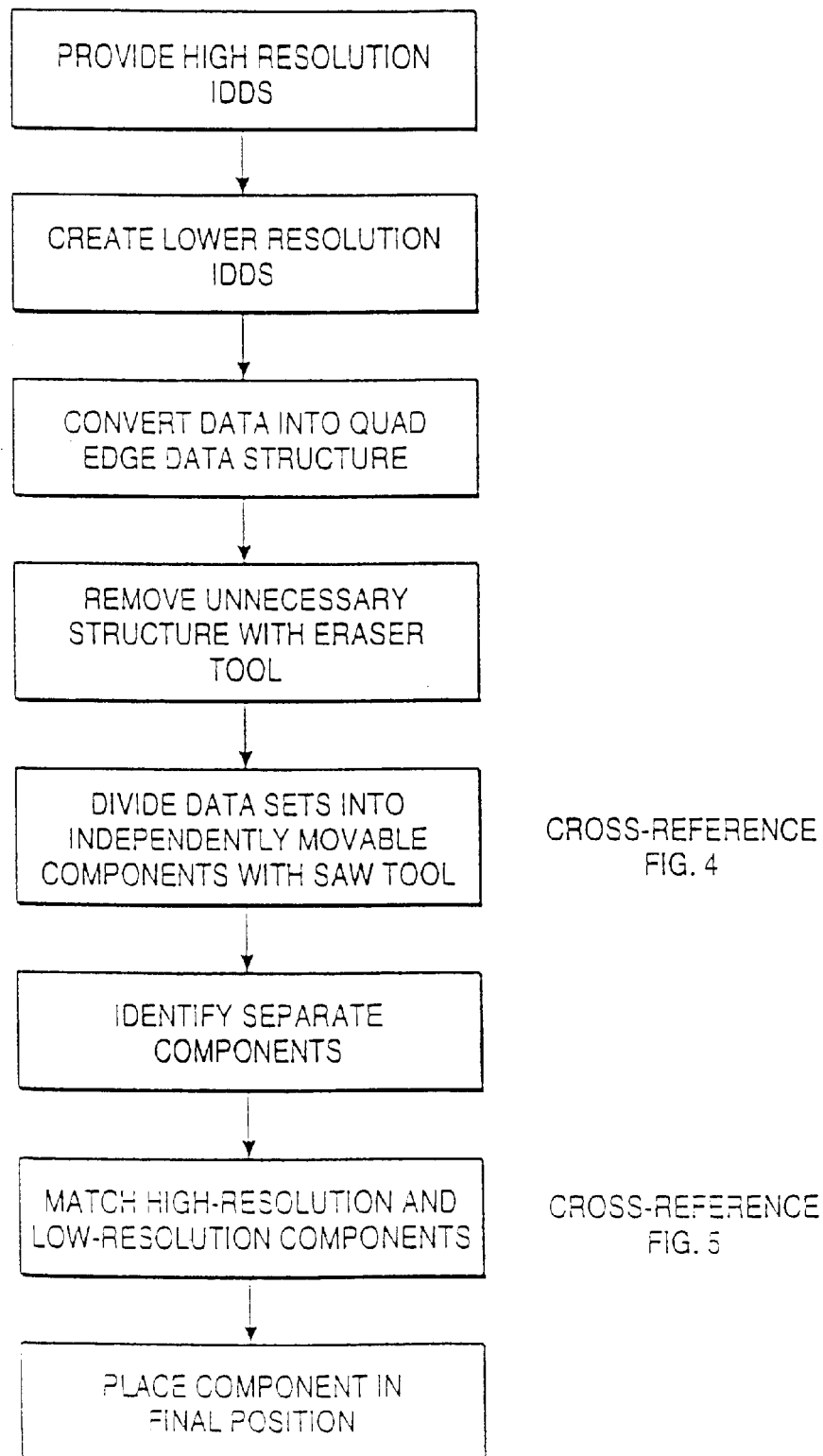


FIG. 3

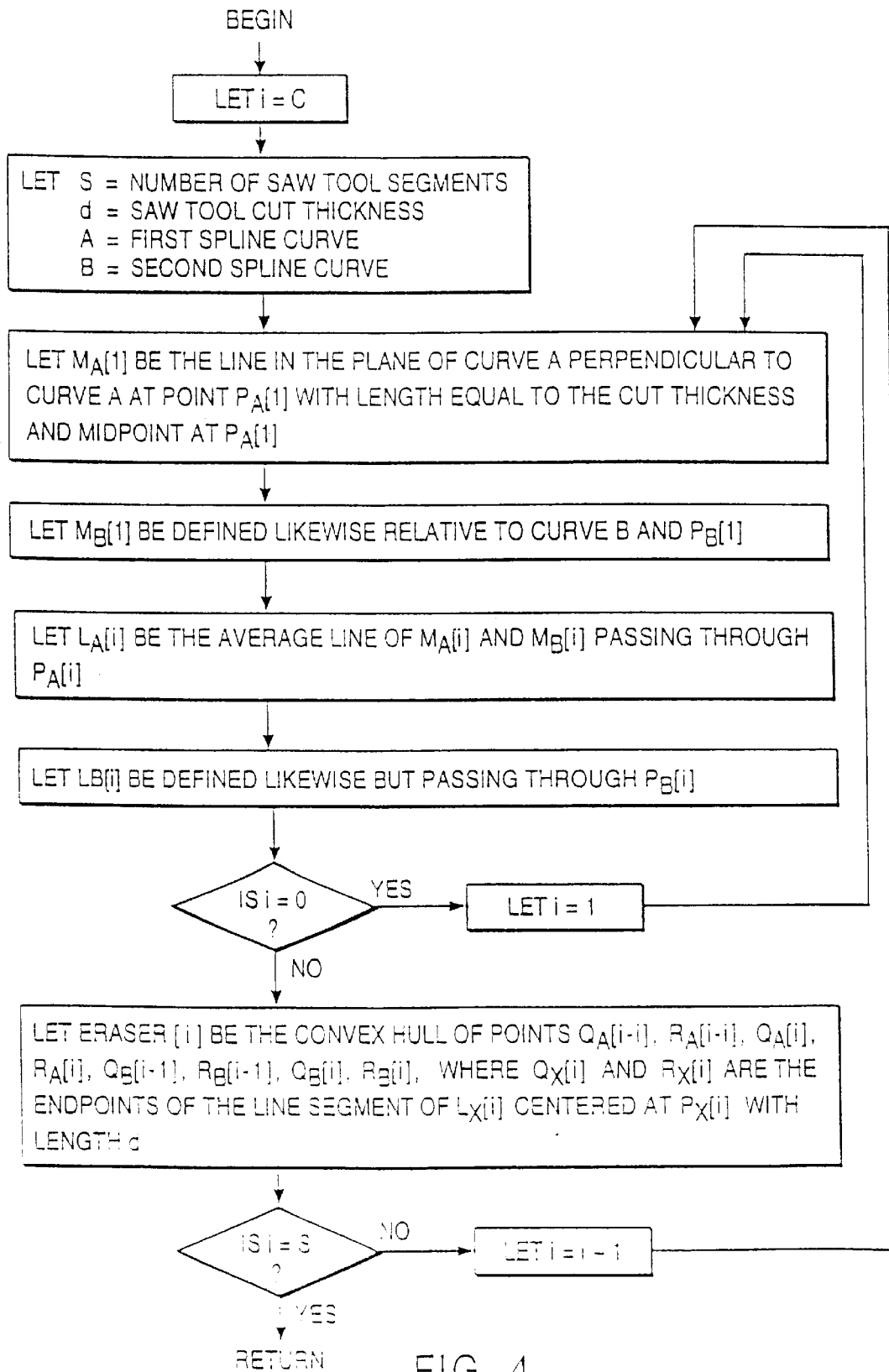


FIG. 4

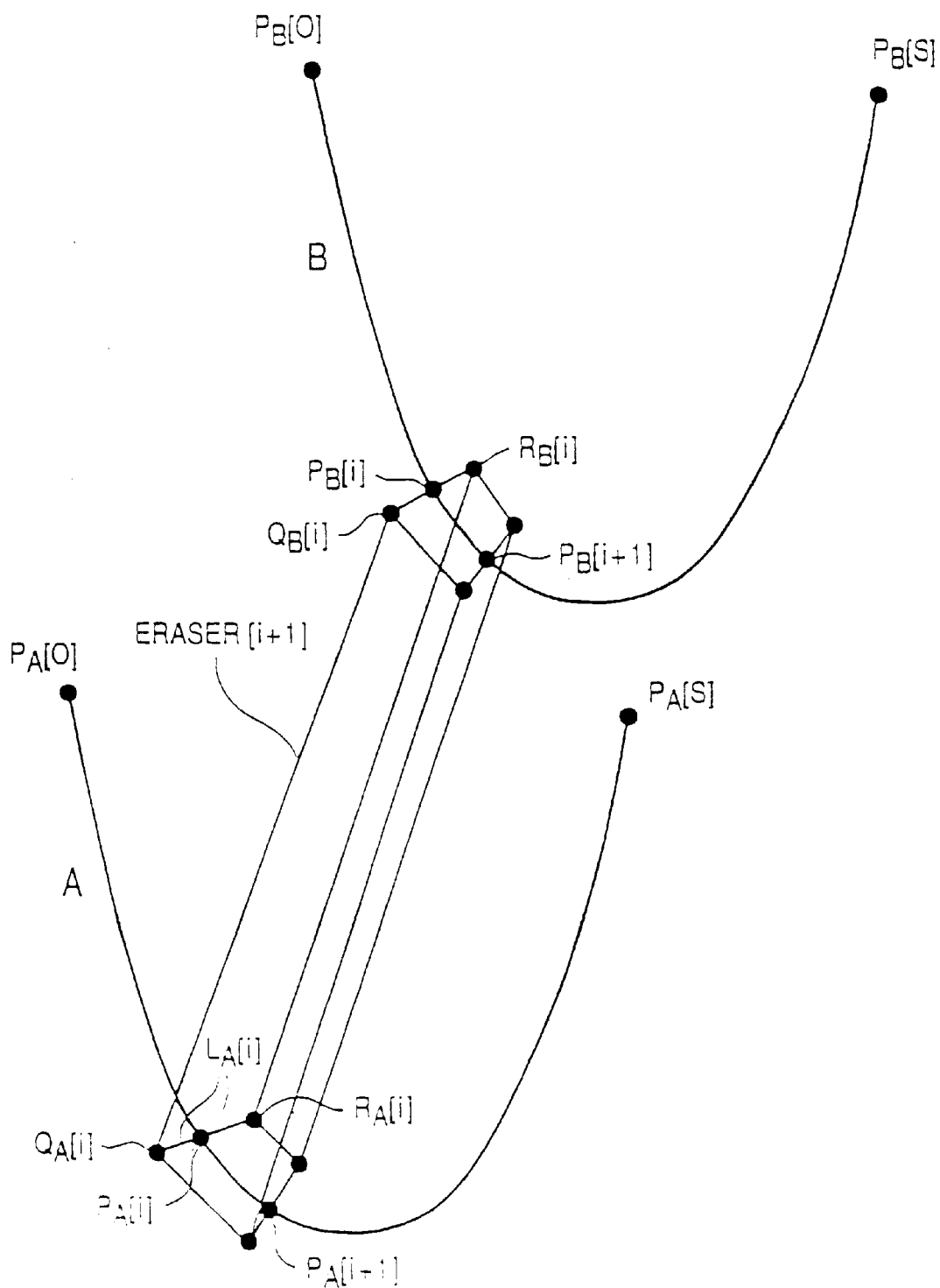


FIG. 4A

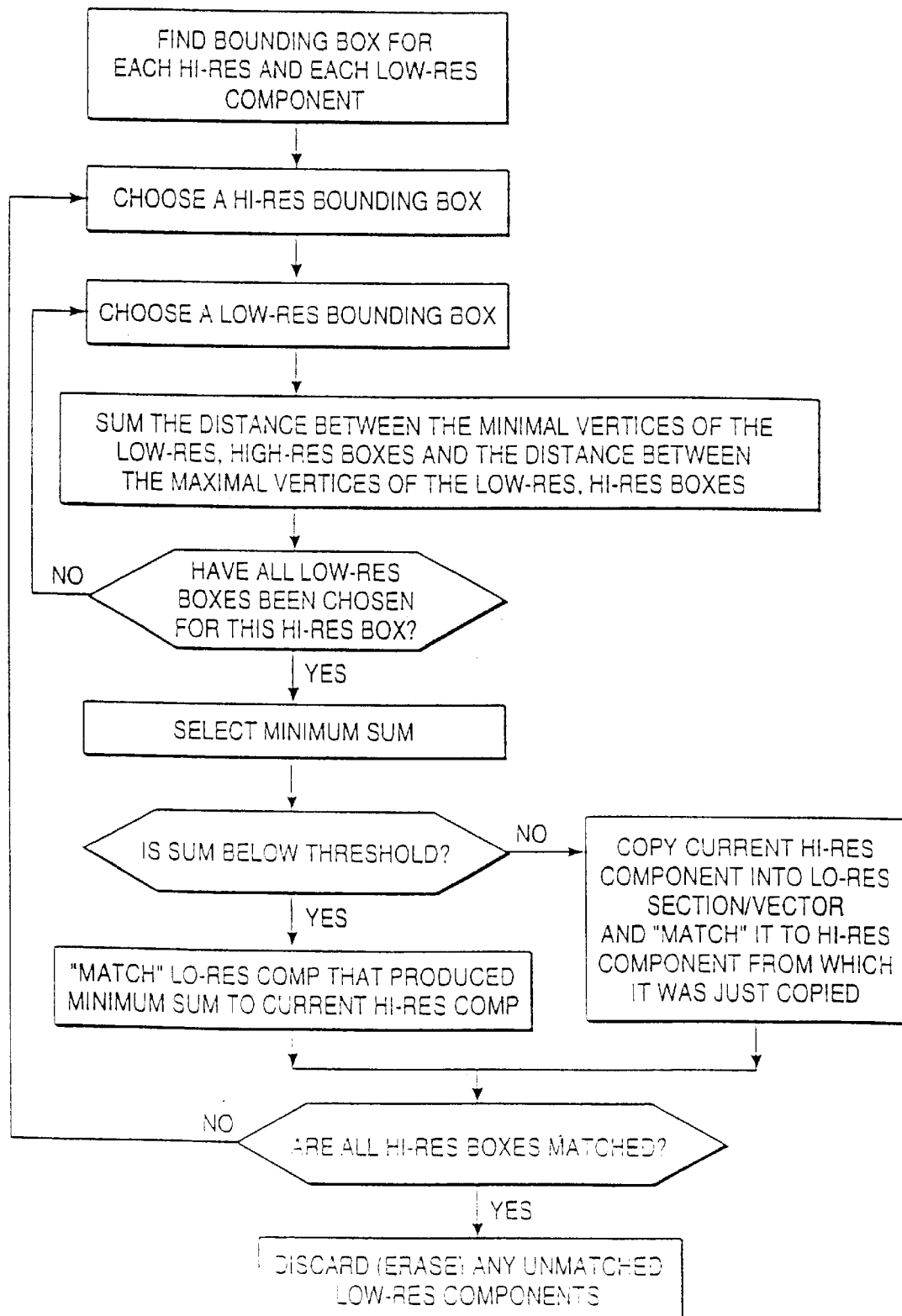


FIG. 5

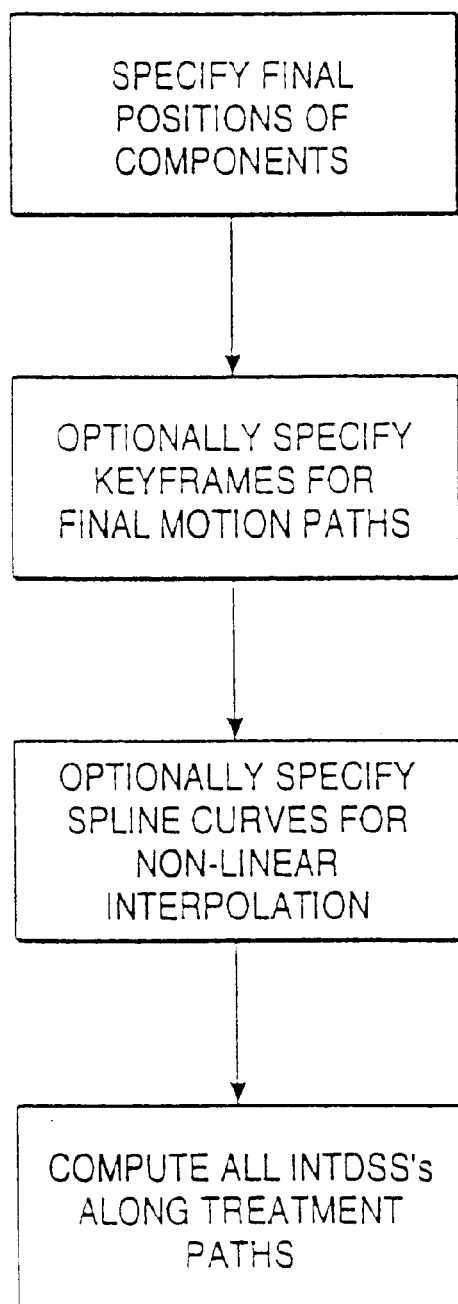


FIG. 6

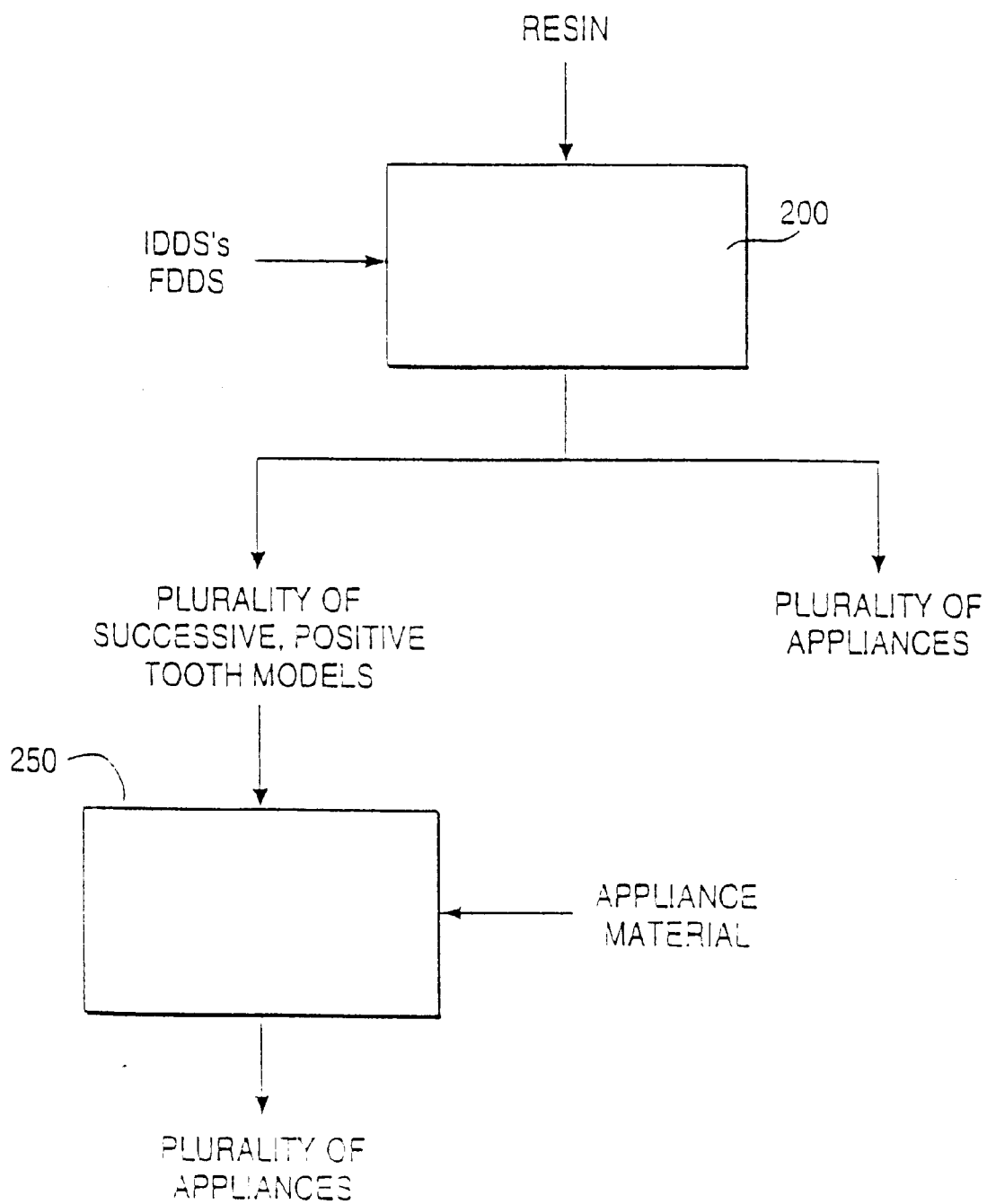


FIG. 7

METHOD AND SYSTEM FOR INCREMENTALLY MOVING TEETH

CROSS-REFERENCES TO RELATED APPLICATIONS

The present application is a continuation of application Ser. No. 09/298,268, filed Apr. 23, 1999, now U.S. Pat. No. 6,217,325 which was a division of application Ser. No. 08/947,080, filed Oct. 8, 1997, now U.S. Pat. No. 5,975,893 which claimed the benefit of provisional Application No. 60/050,342, filed on Jun. 20, 1997, the full disclosures of which are incorporated herein by reference.

BACKGROUND OF THE INVENTION

1. Field of the Invention

The present invention is related generally to the field of orthodontics. More particularly, the present invention is related to a method and system for incrementally moving teeth from an initial tooth arrangement to a final tooth arrangement.

Repositioning teeth for aesthetic or other reasons is accomplished conventionally by wearing what are commonly referred to as "braces." Braces comprise a variety of appliances such as brackets, archwires, ligatures, and O-rings. Attaching the appliances to a patient's teeth is a tedious and time consuming enterprise requiring many meetings with the treating orthodontist. Consequently, conventional orthodontic treatment limits an orthodontist's patient capacity and makes orthodontic treatment quite expensive.

Before fastening braces to a patient's teeth, at least one appointment is typically scheduled with the orthodontist, dentist, and/or X-ray laboratory so that X-rays and photographs of the patient's teeth and jaw structure can be taken. Also during this preliminary meeting, or possibly at a later meeting, an alginate mold of the patient's teeth is typically made. This mold provides a model of the patient's teeth that the orthodontist uses in conjunction with the X-rays and photographs to formulate a treatment strategy. The orthodontist then typically schedules one or more appointments during which braces will be attached to the patient's teeth.

At the meeting during which braces are first attached, the teeth surfaces are initially treated with a weak acid. The acid optimizes the adhesion properties of the teeth surfaces for brackets and bands that are to be bonded to them. The brackets and bands serve as anchors for other appliances to be added later. After the acid step, the brackets and bands are cemented to the patient's teeth using a suitable bonding material. No force-inducing appliances are added until the cement is set. For this reason, it is common for the orthodontist to schedule a later appointment to ensure that the brackets and bands are well bonded to the teeth.

The primary force-inducing appliance in a conventional set of braces is the archwire. The archwire is resilient and is attached to the brackets by way of slots in the brackets. The archwire links the brackets together and exerts forces on them to move the teeth over time. Twisted wires or elastomeric O-rings are commonly used to reinforce attachment of the archwire to the brackets. Attachment of the archwire to the brackets is known in the art of orthodontia as "ligation" and wires used in this procedure are called "ligatures." The elastomeric O-rings are called "plastics."

After the archwire is in place, periodic meetings with the orthodontist are required, during which the patient's braces will be adjusted by installing a different archwire having different force-inducing properties or by replacing or tight-

ening existing ligatures. Typically, these meetings are scheduled every three to six weeks.

As the above illustrates, the use of conventional braces is a tedious and time consuming process and requires many visits to the orthodontist's office. Moreover, from the patient's perspective, the use of braces is unsightly, uncomfortable, presents a risk of infection, and makes brushing, flossing, and other dental hygiene procedures difficult.

For these reasons, it would be desirable to provide alternative methods and systems for repositioning teeth. Such methods and systems should be economical, and in particular should reduce the amount of time required by the orthodontist in planning and overseeing each individual patient. The methods and systems should also be more acceptable to the patient, in particular being less visible, less uncomfortable, less prone to infection, and more compatible with daily dental hygiene. At least some of these objectives will be met by the methods and systems of the present invention described hereinafter.

2. Description of the Background Art

Tooth positioners for finishing orthodontic treatment are described by Kesling in the *Am. J. Orthod. Oral. Surg.* 31:297-304 (1945) and 32:285-293 (1946). The use of silicone positioners for the comprehensive orthodontic realignment of a patient's teeth is described in Warunek et al. (1989) *J. Clin. Orthod.* 23:694-700. Clear plastic retainers for finishing and maintaining tooth positions are commercially available from Raintree Essix, Inc., New Orleans, La. 70125, and Tru-Tain Plastics, Rochester, Minn. 55902. The manufacture of orthodontic positioners is described in U.S. Pat. Nos. 5,186,623; 5,059,118; 5,055,039; 5,035,613; 4,856,991; 4,798,534; and 4,755,139.

Other publications describing the fabrication and use of dental positioners include Kleemann and Janssen (1996) *J. Clin. Orthodon.* 30:673-680; Cureton (1996) *J. Clin. Orthodon.* 30:390-395; Chiappone (1980) *J. Clin. Orthodon.* 14:121-133; Shilliday (1971) *Am. J. Orthodontics* 59:596-599; Wells (1970) *Am. J. Orthodontics* 58:351-366; and Cottingham (1969) *Am. J. Orthodontics* 55:23-31.

Kuroda et al. (1996) *Am. J. Orthodontics* 110:365-369 describes a method for laser scanning a plaster dental cast to produce a digital image of the cast. See also U.S. Pat. No. 5,605,459.

U.S. Pat. Nos. 5,533,895; 5,474,448; 5,454,717; 5,447,432; 5,431,562; 5,395,238; 5,368,478; and 5,139,419, assigned toOrmco Corporation, describe methods for manipulating digital images of teeth for designing orthodontic appliances.

U.S. Pat. No. 5,011,405 describes a method for digitally imaging a tooth and determining optimum bracket positioning for orthodontic treatment. Laser scanning of a molded tooth to produce a three-dimensional model is described in U.S. Pat. No. 5,338,198. U.S. Pat. No. 5,452,219 describes a method for laser scanning a tooth model and milling a tooth mold. Digital computer manipulation of tooth contours is described in U.S. Pat. Nos. 5,607,305 and 5,587,912. Computerized digital imaging of the jaw is described in U.S. Pat. Nos. 5,342,202 and 5,340,309. Other patents of interest include U.S. Pat. Nos. 5,549,476; 5,382,164; 5,273,429; 4,936,862; 3,860,803; 3,660,900; 5,645,421; 5,055,039; 4,798,534; 4,856,991; 5,035,613; 5,059,118; 5,186,623; and 4,755,139.

SUMMARY OF THE INVENTION

The present invention provides improved methods and systems for repositioning teeth from an initial tooth arrange-

ment to a final tooth arrangement. Repositioning is accomplished with a system comprising a series of appliances configured to receive the teeth in a cavity and incrementally reposition individual teeth in a series of at least three successive steps, usually including at least four successive steps, often including at least ten steps, sometimes including at least twenty-five steps, and occasionally including forty or more steps. Most often, the methods and systems will reposition teeth in from ten to twenty-five successive steps, although complex cases involving many of the patient's teeth may take forty or more steps. The successive use of a number of such appliances permits each appliance to be configured to move individual teeth in small increments, typically less than 2 mm, preferably less than 1 mm, and more preferably less than 0.5 mm. These limits refer to the maximum linear translation of any point on a tooth as a result of using a single appliance. The movements provided by successive appliances, of course, will usually not be the same for any particular tooth. Thus, one point on a tooth may be moved by a particular distance as a result of the use of one appliance and thereafter moved by a different distance and/or in a different direction by a later appliance.

The individual appliances will preferably comprise a polymeric shell having the teeth-receiving cavity formed therein, typically by molding as described below. Each individual appliance will be configured so that its tooth-receiving cavity has a geometry corresponding to an intermediate or end tooth arrangement intended for that appliance. That is, when an appliance is first worn by the patient, certain of the teeth will be misaligned relative to an undeformed geometry of the appliance cavity. The appliance, however, is sufficiently resilient to accommodate or conform to the misaligned teeth, and will apply sufficient resilient force against such misaligned teeth in order to reposition the teeth to the intermediate or end arrangement desired for that treatment step.

Systems according to the present invention will include at least a first appliance having a geometry selected to reposition a patient's teeth from the initial tooth arrangement to a first intermediate arrangement where individual teeth will be incrementally repositioned. The system will further comprise at least one intermediate appliance having a geometry selective to progressively reposition teeth from the first intermediate arrangement to one or more successive intermediate arrangements. The system will still further comprise a final appliance having a geometry selected to progressively reposition teeth from the last intermediate arrangement to the desired final tooth arrangement. In some cases, it will be desirable to form the final appliance or several appliances to "over correct" the final tooth position, as discussed in more detail below.

As will be described in more detail below in connection with the methods of the present invention, the systems may be planned and all individual appliances fabricated at the outset of treatment, and the appliances may thus be provided to the patient as a single package or system. The order in which the appliances are to be used will be clearly marked, (e.g. by sequential numbering) so that the patient can place the appliances over his or her teeth at a frequency prescribed by the orthodontist or other treating professional. Unlike braces, the patient need not visit the treating professional every time an adjustment in the treatment is made. While the patients will usually want to visit their treating professionals periodically to assure that treatment is going according to the original plan, eliminating the need to visit the treating professional each time an adjustment is to be made allows the treatment to be carried out in many more, but smaller,

successive steps while still reducing the time spent by the treating professional with the individual patient. Moreover, the ability to use polymeric shell appliances which are more comfortable, less visible, and removable by the patient, greatly improves patient compliance, comfort, and satisfaction.

According to a method of the present invention, a patient's teeth are repositioned from an initial tooth arrangement to a final tooth arrangement by placing a series of incremental position adjustment appliances in the patient's mouth. Conveniently, the appliances are not affixed and the patient may place and replace the appliances at any time during the procedure. The first appliance of the series will have a geometry selected to reposition the teeth from the initial tooth arrangement to a first intermediate arrangement. After the first intermediate arrangement is approached or achieved, one or more additional (intermediate) appliances will be successively placed on the teeth, where such additional appliances have geometries selected to progressively reposition teeth from the first intermediate arrangement through successive intermediate arrangement(s). The treatment will be finished by placing a final appliance in the patient's mouth, where the final appliance has a geometry selected to progressively reposition teeth from the last intermediate arrangement to the final tooth arrangement. The final appliance or several appliances in the series may have a geometry or geometries selected to over correct the tooth arrangement, i.e. have a geometry which would (if fully achieved) move individual teeth beyond the tooth arrangement which has been selected as the "final." Such over correction may be desirable in order to offset potential relapse after the repositioning method has been terminated, i.e. to permit some movement of individual teeth back toward their pre-corrected positions. Over correction may also be beneficial to speed the rate of correction, i.e. by having an appliance with a geometry that is positioned beyond a desired intermediate or final position, the individual teeth will be shifted toward the position at a greater rate. In such cases, treatment can be terminated before the teeth reach the positions defined by the final appliance or appliances. The method will usually comprise placing at least two additional appliances, often comprising placing at least ten additional appliances, sometimes placing at least twenty-five additional appliances, and occasionally placing at least forty or more additional appliances. Successive appliances will be replaced when the teeth either approach (within a preselected tolerance) or have reached the target end arrangement for that stage of treatment, typically being replaced at an interval in the range from 2 days to 20 days, usually at an interval in the range from 5 days to 10 days.

Often, it may be desirable to replace the appliances at a time before the "end" tooth arrangement of that treatment stage is actually achieved. It will be appreciated that as the teeth are gradually repositioned and approach the geometry defined by a particular appliance, the repositioning force on the individual teeth will diminish greatly. Thus, it may be possible to reduce the overall treatment time by replacing an earlier appliance with the successive appliance at a time when the teeth have been only partially repositioned by the earlier appliance. Thus, the FDDS can actually represent an over correction of the final tooth position. This both speeds the treatment and can offset patient relapse.

In general, the transition to the next appliance can be based on a number of factors. Most simply, the appliances can be replaced on a predetermined schedule or at a fixed time interval (i.e. number of days for each appliance) determined at the outset based on an expected or typical

patient response. Alternatively, actual patient response can be taken into account, e.g. a patient can advance to the next appliance when that patient no longer perceives pressure on their teeth from a current appliance, i.e. the appliance they have been wearing fits easily over the patient's teeth and the patient experiences little or no pressure or discomfort on his or her teeth. In some cases, for patients whose teeth are responding very quickly, it may be possible for a treating professional to decide to skip one or more intermediate appliances, i.e. reduce the total number of appliances being used below the number determined at the outset. In this way, the overall treatment time for a particular patient can be reduced.

In another aspect, methods of the present invention comprise repositioning teeth using appliances comprising polymeric shells having cavities shaped to receive and resiliently reposition teeth to produce a final tooth arrangement. The present invention provides improvements to such methods which comprise determining at the outset of treatment geometries for at least three of the appliances which are to be worn successively by a patient to reposition teeth from an initial tooth arrangement to the final tooth arrangement. Preferably, at least four geometries will be determined in the outset, often at least ten geometries, frequently at least twenty-five geometries, and sometimes forty or more geometries. Usually, the tooth positions defined by the cavities in each successive geometry differ from those defined by the prior geometry by no more than 2 mm, preferably no more than 1 mm, and often no more than 0.5 mm, as defined above.

In yet another aspect, methods are provided for producing a digital data set representing a final tooth arrangement. The methods comprise providing an initial data set representing an initial tooth arrangement, and presenting a visual image based on the initial data set. The visual image is then manipulated to reposition individual teeth in the visual image. A final digital data set is then produced which represents the final tooth arrangement with repositioned teeth as observed in the visual image. Conveniently, the initial digital data set may be provided by conventional techniques, including digitizing X-ray images, images produced by computer-aided tomography (CAT scans), images produced by magnetic resonance imaging (MRI), and the like. Preferably, the images will be three-dimensional images and digitization may be accomplished using conventional technology. Usually, the initial digital data set is provided by producing a plaster cast of the patient's teeth (prior to treatment) by conventional techniques. The plaster cast so produced may then be scanned using laser or other scanning equipment to produce a high resolution digital representation of the plaster cast of the patient's teeth. Use of the plaster cast is preferred since it does not expose the patient to X-rays or subject the patient to the inconvenience of an MRI scan.

Once the digital data set is acquired, an image can be presented and manipulated on a suitable computer system equipped with computer-aided design software, as described in greater detail below. The image manipulation will usually comprise defining boundaries about at least some of the individual teeth, and causing the images of the teeth to be moved relative to the jaw and other teeth by manipulation of the image via the computer. The image manipulation can be done entirely subjectively, i.e. the user may simply reposition teeth in an aesthetically and/or therapeutically desired manner based on observation of the image alone. Alternatively, the computer system could be provided with rules and algorithms which assist the user in repositioning

the teeth. In some instances, it will be possible to provide rules and algorithms which reposition the teeth in a fully automatic manner, i.e. without user intervention. Once the individual teeth have been repositioned, a final digital data set representing the desired final tooth arrangement will be generated and stored.

A preferred method for determining the final tooth arrangement is for the treating professional to define the final tooth positions, e.g. by writing a prescription. The use of prescriptions for defining the desired outcomes of orthodontic procedures is well known in the art. When a prescription or other final designation is provided, the image can then be manipulated to match the prescription. In some cases, it would be possible to provide software which could interpret the prescription in order to generate the final image and thus the digital data set representing the final tooth arrangement.

In yet another aspect, methods according to the present invention are provided for producing a plurality of digital data sets representing a series of discrete tooth arrangements progressing from an initial tooth arrangement to a final tooth arrangement. Such methods comprise providing a digital data set representing an initial tooth arrangement (which may be accomplished according to any of the techniques set forth above). A digital data set representing a final tooth arrangement is also provided. Such final digital data set may be determined by the methods described previously. The plurality of successive digital data sets are then produced based on the initial digital data set and the final digital data set. Usually, the successive digital data sets are produced by determining positional differences between selected individual teeth in the initial data set and in the final data set and interpolating said differences. Such interpolation may be performed over as many discrete stages as may be desired, usually at least three, often at least four, more often at least ten, sometimes at least twenty-five, and occasionally forty or more. Many times, the interpolation will be linear interpolation for some or all of the positional differences. Alternatively, the interpolation may be non-linear. The positional differences will correspond to tooth movements where the maximum linear movement of any point on a tooth is 2 mm or less, usually being 1 mm or less, and often being 0.5 mm or less.

Often, the user will specify certain target intermediate tooth arrangements, referred to as "key frames," which are incorporated directly into the intermediate digital data sets. The methods of the present invention then determine successive digital data sets between the key frames in the manner described above, e.g. by linear or non-linear interpolation between the key frames. The key frames may be determined by a user, e.g. the individual manipulating a visual image at the computer used for generating the digital data sets, or alternatively may be provided by the treating professional as a prescription in the same manner as the prescription for the final tooth arrangement.

In still another aspect, methods according to the present invention provide for fabricating a plurality of dental incremental position adjustment appliances. Said methods comprise providing an initial digital data set, a final digital data set, and producing a plurality of successive digital data sets representing the target successive tooth arrangements, generally as just described. The dental appliances are then fabricated based on at least some of the digital data sets representing the successive tooth arrangements. Preferably, the fabricating step comprises controlling a fabrication machine based on the successive digital data sets to produce successive positive models of the desired tooth arrange-

ments. The dental appliances are then produced as negatives of the positive models using conventional positive pressure or vacuum fabrication techniques. The fabrication machine may comprise a stereolithography or other similar machine which relies on selectively hardening a volume of non-hardened polymeric resin by scanning a laser to selectively harden the resin in a shape based on the digital data set. Other fabrication machines which could be utilized in the methods of the present invention include tooling machines and wax deposition machines.

In still another aspect, methods of the present invention for fabricating a dental appliance comprise providing a digital data set representing a modified tooth arrangement for a patient. A fabrication machine is then used to produce a positive model of the modified tooth arrangement based on the digital data set. The dental appliance is then produced as a negative of the positive model. The fabrication machine may be a stereolithography or other machine as described above, and the positive model is produced by conventional pressure or vacuum molding techniques.

In a still further aspect, methods for fabricating a dental appliance according to the present invention comprise providing a first digital data set representing a modified tooth arrangement for a patient. A second digital data set is then produced from the first digital data set, where the second data set represents a negative model of the modified tooth arrangement. The fabrication machine is then controlled based on the second digital data set to produce the dental appliance. The fabrication machine will usually rely on selectively hardening a non-hardened resin to produce the appliance. The appliance typically comprises a polymeric shell having a cavity shape to receive and resiliently reposition teeth from an initial tooth arrangement to the modified tooth arrangement.

BRIEF DESCRIPTION OF THE DRAWINGS

FIG. 1A illustrates a patient's jaw and provides a general indication of how teeth may be moved by the methods and apparatus of the present invention.

FIG. 1B illustrates a single tooth from FIG. 1A and defines how tooth movement distances are determined.

FIG. 1C illustrates the jaw of FIG. 1A together with an incremental position adjustment appliance which has been configured according to the methods of the present invention.

FIG. 2 is a block diagram illustrating the steps of the present invention for producing a system of incremental position adjustment appliances.

FIG. 3 is a block diagram setting forth the steps for manipulating an initial digital data set representing an initial tooth arrangement to produce a final digital data set corresponding to a desired final tooth arrangement.

FIG. 4 is a flow chart illustrating an eraser tool for the methods herein.

FIG. 4A illustrates the volume of space which is being erased by the program of FIG. 4.

FIG. 5 is a flow chart illustrating a program for matching high-resolution and low-resolution components in the manipulation of data sets of FIG. 3.

FIG. 6 illustrates the method for generating multiple intermediate digital data sets which are used for producing the adjustment appliances of the present invention.

FIG. 7 illustrates alternative processes for producing a plurality of appliances according to the methods of the present invention utilizing digital data sets representing the intermediate and final appliance designs.

DESCRIPTION OF THE SPECIFIC EMBODIMENTS

According to the present invention, systems and methods are provided for incrementally moving teeth using a plurality of discrete appliances, where each appliance successively moves one or more of the patient's teeth by relatively small amounts. The tooth movements will be those normally associated with orthodontic treatment, including translation in all three orthogonal directions relative to a vertical centerline, rotation of the tooth centerline in the two orthodontic directions ("root angulation" and "torque"), as well as rotation about the centerline.

Referring now to FIG. 1A, a representative jaw **100** includes sixteen teeth **102**. The present invention is intended to move at least some of these teeth from an initial tooth arrangement to a final tooth arrangement. To understand how the teeth may be moved, an arbitrary centerline (CL) is drawn through one of the teeth **102**. With reference to this centerline (CL), the teeth may be moved in the orthogonal directions represented by axes **104**, **106**, and **108** (where **104** is the centerline). The centerline may be rotated about the axis **108** (root angulation) and **104** (torque) as indicated by arrows **110** and **112**, respectively. Additionally, the tooth may be rotated about the centerline, as represented by arrow **114**. Thus, all possible free-form motions of the tooth can be performed. Referring now to FIG. 1B, the magnitude of any tooth movement achieved by the methods and devices of the present invention will be defined in terms of the maximum linear translation of any point P on a tooth **102**. Each point P_i will undergo a cumulative translation as that tooth is moved in any of the orthogonal or rotational directions defined in FIG. 1A. That is, while the point will usually follow a non-linear path, there will be a linear distance between any point in the tooth when determined at any two times during the treatment. Thus, an arbitrary point P₁ may in fact undergo a true side-to-side translation as indicated by arrow d₁, while a second arbitrary point P₂ may travel along an arcuate path, resulting in a final translation d₂. Many aspects of the present invention are defined in terms of the maximum permissible movement of a point P_i induced by the methods in any particular tooth. Such maximum tooth movement, in turn, is defined as the maximum linear translation of that point P_i on the tooth which undergoes the maximum movement for that tooth in any treatment step.

Referring now to FIG. 1C, systems according to the present invention will comprise a plurality of incremental position adjustment appliances. The appliances are intended to effect incremental repositioning of individual teeth in the jaw as described generally above. In a broadest sense, the methods of the present invention can employ any of the known positioners, retainers, or other removable appliances which are known for finishing and maintaining teeth positions in connection with conventional orthodontic treatment. The systems of the present invention, in contrast with prior apparatus and systems, will provide a plurality of such appliances intended to be worn by a patient successively in order to achieve the gradual tooth repositioning as described herein. A preferred appliance **100** will comprise a polymeric shell having a cavity shaped to receive and resiliently reposition teeth from one tooth arrangement to a successive tooth arrangement. The polymeric shell will preferably, but not necessarily, fit over all teeth present in the upper or lower jaw. Often, only certain one(s) of the teeth will be repositioned while others of the teeth will provide a base or anchor region for holding the repositioning appliance in place as it applies the resilient repositioning force against the tooth or

teeth to be repositioned. In complex cases, however, many or most of the teeth will be repositioned at some point during the treatment. In such cases, the teeth which are moved can also serve as a base or anchor region for holding the repositioning appliance. Additionally, the gums and/or the palette can serve as an anchor region, thus allowing all or nearly all of the teeth to be repositioned simultaneously.

The polymeric appliance **100** of FIG. 1C is preferably formed from a thin sheet of a suitable elastomeric polymeric, such as Tru-Tain 0.03 in. thermal forming dental material, Tru-Tain Plastics, Rochester, Minn. 55902. Usually, no wires or other means will be provided for holding the appliance in place over the teeth. In some cases, however, it will be desirable or necessary to provide individual anchors on teeth with corresponding receptacles or apertures in the appliance **100** so that the appliance can apply an upward force on the tooth which would not be possible in the absence of such an anchor. Specific methods for producing the appliances **100** are described hereinafter.

Referring now to FIG. 2, the overall method of the present invention for producing the incremental position adjustment appliances for subsequent use by a patient to reposition the patient's teeth will be described. As a first step, a digital data set representing an initial tooth arrangement is obtained, referred to hereinafter as the IDDS. The IDDS may be obtained in a variety of ways. For example, the patient's teeth may be scanned or imaged using well known technology, such as X-rays, three-dimensional X-rays, computer-aided tomographic images or data sets, magnetic resonance images, etc. Methods for digitizing such conventional images to produce data sets useful in the present invention are well known and described in the patent and medical literature. Usually, however, the present invention will rely on first obtaining a plaster cast of the patient's teeth by well known techniques, such as those described in Graber, *Orthodontics: Principle and Practice*, Second Edition, Saunders, Philadelphia, 1969, pp. 401-415. After the tooth casting is obtained, it can be digitally scanned using a conventional laser scanner or other range acquisition system to produce the IDDS. The data set produced by the range acquisition system may, of course, be converted to other formats to be compatible with the software which is used for manipulating images within the data set, as described in more detail below. General techniques for producing plaster casts of teeth and generating digital models using laser scanning techniques are described, for example, in U.S. Pat. No. 5,605,459, the full disclosure of which is incorporated herein by reference.

There are a variety of range acquisition systems, generally categorized by whether the process of acquisition requires contact with the three dimensional object. A contact-type range acquisition system utilizes a probe, having multiple degrees of translational and/or rotational freedom. By recording the physical displacement of the probe as it is drawn across the sample surface, a computer-readable representation of the sample object is made. A non-contact-type range acquisition device can be either a reflective-type or transmissive-type system. There are a variety of reflective systems in use. Some of these reflective systems utilize non-optical incident energy sources such as microwave radar or sonar. Others utilize optical energy. Those non-contact-type systems working by reflected optical energy further contain special instrumentation configured to permit certain measuring techniques to be performed (e.g., imaging radar, triangulation and interferometry).

A preferred range acquisition system is an optical, reflective, non-contact-type scanner. Non-contact-type scan-

ners are preferred because they are inherently nondestructive (i.e., do not damage the sample object), are generally characterized by a higher capture resolution and scan a sample in a relatively short period of time. One such scanner is the Cyberware Model 15 manufactured by Cyberware, Inc., Monterey, Calif.

Either non-contact-type or contact-type scanners may also include a color camera, that when synchronized with the scanning capabilities, provides a means for capturing, in digital format, a color representation of the sample object. The importance of this further ability to capture not just the shape of the sample object but also its color is discussed below.

The methods of the present invention will rely on manipulating the IDDS at a computer or workstation having a suitable graphical user interface (GUI) and software appropriate for viewing and modifying the images. Specific aspects of the software will be described in detail hereinafter. While the methods will rely on computer manipulation of digital data, the systems of the present invention comprising multiple dental appliances having incrementally differing geometries may be produced by non-computer-aided techniques. For example, plaster casts obtained as described above may be cut using knives, saws, or other cutting tools in order to permit repositioning of individual teeth within the casting. The disconnected teeth may then be held in place by soft wax or other malleable material, and a plurality of intermediate tooth arrangements can then be prepared using such a modified plaster casting of the patient's teeth. The different arrangements can be used to prepare sets of multiple appliances, generally as described below, using pressure and vacuum molding techniques. While such manual creation of the appliance systems of the present invention will generally be much less preferred, systems so produced will come within the scope of the present invention.

Referring again to FIG. 2, after the IDDS has been obtained, the digital information will be introduced to the computer or other workstation for manipulation. In the preferred approach, individual teeth and other components will be "cut" to permit their individual repositioning or removal from the digital data. After thus "freeing" the components, the user will often follow a prescription or other written specification provided by the treating professional. Alternatively, the user may reposition them based on the visual appearance or using rules and algorithms programmed into the computer. Once the user is satisfied with the final arrangement, the final tooth arrangement is incorporated into a final digital data set (FDDS).

Based on both the IDDS and the FDDS, a plurality of intermediate digital data sets (INTDDS's) are generated to correspond to successive intermediate tooth arrangements. The system of incremental position adjustment appliances can then be fabricated based on the INTDDS's, as described in more detail below.

FIG. 3 illustrates a representative technique for manipulating the IDDS to produce the FDDS on the computer. Usually, the data from the digital scanner will be in a high resolution form. In order to reduce the computer time necessary to generate images, a parallel set of digital data set representing the IDDS at a lower resolution will be created. The user will manipulate the lower resolution images while the computer will update the high resolution data set as necessary. The user can also view/manipulate the high resolution model if the extra detail provided in that model is useful. The IDDS will also be converted into a quad edge data structure if not already present in that form. A quad edge

data structure is a standard topological data structure defined in Primitives for the Manipulation of General Subdivisions and the Computation of Voronoi Diagrams, ACM Transactions of Graphics, Vol. 4, No. 2, April 1985, pp. 74–123. Other topological data structures, such as the winged-edge data structure, could also be used.

As an initial step, while viewing the three-dimensional image of the patient's jaw, including the teeth, gingivae, and other oral tissue, the user will usually delete structure which is unnecessary for image manipulation and/or final production of an appliance. These unwanted sections of the model may be removed using an eraser tool to perform a solid modeling subtraction. The tool is represented by a graphic box. The volume to be erased (the dimensions, position, and orientation of the box) are set by the user employing the GUI. Typically, unwanted sections would include extraneous gum area and the base of the originally scanned cast. Another application for this tool is to stimulate the extraction of teeth and the "shaving down" of tooth surfaces. This is necessary when additional space is needed in the jaw for the final positioning of a tooth to be moved. The treating professional may choose to determine which teeth will be shaved and/or which teeth will be extracted. Shaving allows the patient to maintain their teeth when only a small amount of space is needed. Typically, extraction and shaving, of course, will be utilized in the treatment planning only when the actual patient teeth are to be extracted and/or shaved prior to initiating repositioning according to the methods of the present invention.

Removing unwanted and/or unnecessary sections of the model increases data processing speed and enhances the visual display. Unnecessary sections include those not needed for creation of the tooth repositioning appliance. The removal of these unwanted sections reduces the complexity and size of the digital data set, thus accelerating manipulations of the data set and other operations.

After the user positions and sizes the eraser tool and instructs the software to erase the unwanted section, all triangles within the box set by the user will be removed and the border triangles are modified to leave a smooth, linear border. The software deletes all of the triangles within the box and clips all triangles which cross the border of the box. This requires generating new vertices on the border of the box. The holes created in the model at the faces of the box are re-triangulated and closed using the newly created vertices.

The saw tool is used to define the individual teeth (or possibly groups of teeth) to be moved. The tool separates the scanned image into individual graphic components enabling the software to move the tooth or other component images independent of remaining portions of the model. The saw tool defines a path for cutting the graphic image by using two cubic B-spline curves lying in space, possibly constrained to parallel planes. A set of lines connects the two curves and shows the user the general cutting path. The user may edit the control points on the cubic B-splines, the thickness of the saw cut, and the number of erasers used, as described below.

Thickness: When a cut is used to separate a tooth, the user will usually want the cut to be as thin as possible. However, the user may want to make a thicker cut, for example, when shaving down surrounding teeth, as described above. Graphically, the cut appears as the curve bounded by half the thickness of the cut on each side of the curve.

Number of Erasers: A cut is comprised of multiple eraser boxes arranged next to each other as a piecewise linear

approximation of the Saw Tool's curve path. The user chooses the number of erasers, which determines the sophistication of the curve created—the greater the number of segments, the more accurately the cutting will follow the curve. The number of erasers is shown graphically by the number of parallel lines connecting the two cubic B-spline curves. Once a saw cut has been completely specified the user applies the cut to the model. The cut is performed as a sequence of erasings. A preferred algorithm is set forth in FIG. 4. FIG. 4A shows a single erasing iteration of the cut as described in the algorithm.

A preview feature may also be provided in the software. The preview feature visually displays a saw cut as the two surfaces that represent opposed sides of the cut. This allows the user to consider the final cut before applying it to the model data set.

After the user has completed all desired cutting operations with the saw tool, multiple graphic solids exist. However, at this point, the software has not determined which triangles of the quad edge data structure belong to which components. The software chooses a random starting point in the data structure and traverses the data structure using adjacency information to find all of the triangles that are attached to each other, identifying an individual component. This process is repeated starting with the triangle whose component is not yet determined. Once the entire data structure is traversed, all components have been identified.

To the user, all changes made to the high resolution model appear to occur simultaneously in the low resolution model, and vice versa. However, there is not a one-to-one correlation between the different resolution models. Therefore, the computer "matches" the high resolution and low resolution components as best as it can subject to defined limits. The algorithm is described in FIG. 5.

After the teeth and other components have been placed or removed so that the final tooth arrangement has been produced, it is necessary to generate a treatment plan, as illustrated in FIG. 6. The treatment plan will ultimately produce the series of INTDDS's and FDDS as described previously. To produce these data sets, it is necessary to define or map the movement of selected individual teeth from the initial position to the final position over a series of successive steps. In addition, it may be necessary to add other features to the data sets in order to produce desired features in the treatment appliances. For example, it may be desirable to add wax patches to the image in order to define cavities or recesses for particular purposes. For example, it may be desirable to maintain a space between the appliance and particular regions of the teeth or jaw in order to reduce soreness of the gums, avoid periodontal problems, allow for a cap, and the like. Additionally, it will often be necessary to provide a receptacle or aperture intended to accommodate an anchor which is to be placed on a tooth in order to permit the tooth to be manipulated in a manner that requires the anchor, e.g. lifted relative to the jaw.

Some methods for manufacturing the tooth repositioning appliances require that the separate, repositioned teeth and other components be unified into a single continuous structure in order to permit manufacturing. In these instances, "wax patches" are used to attach otherwise disconnected components of the INTDDS's. These patches are added to the data set underneath the teeth and above the gum so that they do not effect the geometry of the tooth repositioning appliances. The application software provides for a variety of wax patches to be added to the model, including boxes and spheres with adjustable dimensions. The wax patches

that are added are treated by the software as additional pieces of geometry, identical to all other geometries. Thus, the wax patches can be repositioned during the treatment path as well as the teeth and other components.

In the manufacturing process, which relies on generation of positive models to produce the repositioning appliance, adding a wax patch to the graphic model will generate a positive mold that has the same added wax patch geometry. Because the mold is a positive of the teeth and the appliance is a negative of the teeth, when the appliance is formed over the mold, the appliance will also form around the wax patch that has been added to the mold. When placed in the patient's mouth, the appliance will thus allow for a space between the inner cavity surface of the appliance and the patient's teeth or gums. Additionally, the wax patch may be used to form a recess or aperture within the appliance which engages an anchor placed on the teeth in order to move the tooth in directions which could not otherwise be accomplished.

In addition to such wax patches, an individual component, usually a tooth, can be scaled to a smaller or larger size which will result in a manufactured appliance having a tighter or looser fit, respectively.

Treatment planning is extremely flexible in defining the movement of teeth and other components. The user may change the number of treatment stages, as well as individually control the path and speed of components.

Number of Treatment Stages: The user can change the number of desired treatment stages from the initial to the target states of the teeth. Any component that is not moved is assumed to remain stationary, and thus its final position is assumed to be the same as the initial position (likewise for all intermediate positions, unless one or more key frames are defined for that component).

Key Frames: The user may also specify "key frames" by selecting an intermediate state and making changes to component position(s). Unless instructed otherwise, the software automatically linearly interpolates between all user-specified positions (including the initial position, all key frame positions, and the target position). For example, if only a final position is defined for a particular component, each subsequent stage after the initial stage will simply show the component an equal linear distance and rotation (specified by a quaternion) closer to the final position. If the user specifies two key frames for that component, it will "move" linearly from the initial position through different stages to the position defined by the first key frame. It will then move, possibly in a different direction, linearly to the position defined by the second key frame. Finally, it will move, possibly in yet a different direction, linearly to the target position.

The user can also specify non-linear interpolation between the key frames. A spline curve is used to specify the interpolating function in a conventional manner.

These operations may be done independently to each component, so that a key frame for one component will not affect another component, unless the other component is also moved by the user in that key frame. One component may accelerate along a curve between stages 3 and 8, while another moves linearly from stage 1 to 5, and then changes direction suddenly and slows down along a linear path to stage 10. This flexibility allows a great deal of freedom in planning a patient's treatment.

Lastly, the software may incorporate and the user may at any point use a "movie" feature to automatically animate the movement from initial to target states. This is helpful for

visualizing overall component movement throughout the treatment process.

Above it was described that the preferred user interface for component identification is a three dimensional interactive GUI. A three-dimensional GUI is also preferred for component manipulation. Such an interface provides the treating professional or user with instant and visual interaction with the digital model components. It is preferred over interfaces that permit only simple low-level commands for directing the computer to manipulate a particular segment. In other words, a GUI adapted for manipulation is preferred over an interface that accepts directives, for example, only of the sort: "translate this component by 0.1 mm to the right." Such low-level commands are useful for fine-tuning, but, if they were the sole interface, the processes of component manipulation would become a tiresome and time-consuming interaction.

Before or during the manipulation process, one or more tooth components may be augmented with template models of tooth roots. Manipulation of a tooth model augmented with a root template is useful, for example, in situations where impacting of teeth below the gumline is a concern. These template models could, for example, comprise a digitized representation of the patient's teeth x-rays.

The software also allows for adding annotations to the datasets which can comprise text and/or the sequence number of the apparatus. The annotation is added as recessed text (i.e. it is 3-D geometry), so that it will appear on the printed positive model. If the annotation can be placed on a part of the mouth that will be covered by a repositioning appliance, but is unimportant for the tooth motion, the annotation may appear on the delivered repositioning appliance(s).

The above-described component identification and component manipulation software is designed to operate at a sophistication commensurate with the operator's training level. For example, the component manipulation software can assist a computer operator, lacking orthodontic training, by providing feedback regarding permissible and forbidden manipulations of the teeth. On the other hand, an orthodontist, having greater skill in intraoral physiology and teeth-moving dynamics, can simply use the component identification and manipulation software as a tool and disable or otherwise ignore the advice.

Once the intermediate and final data sets have been created, the appliances may be fabricated as illustrated in FIG. 7. Preferably, fabrication methods will employ a rapid prototyping device 200 such as a stereolithography machine. A particularly suitable rapid prototyping machine is Model SLA-250/50 available from 3D System, Valencia, Calif. The rapid prototyping machine 200 will selectively harden a liquid or other non-hardened resin into a three-dimensional structure which can be separated from the remaining non-hardened resin, washed, and used either directly as the appliance or indirectly as a mold for producing the appliance. The prototyping machine 200 will receive the individual digital data sets and produce one structure corresponding to each of the desired appliances. Generally, because the rapid prototyping machine 200 may utilize a resin having non-optimum mechanical properties and which may not be generally acceptable for patient use, it will be preferred to use the prototyping machine to produce molds which are, in effect, positive tooth models of each successive stage of the treatment. After the positive models are prepared, a conventional pressure or vacuum molding machine may be used to produce the appliances from a more suitable material, such as 0.03 inch thermal forming dental material, available from

15

Tru-Tain Plastics, Rochester, Minn. 55902. Suitable pressure molding equipment is available under the trade-name BIOSTAR from Great Lakes Orthodontics, Ltd., Tonawanda, N.Y. 14150. The molding machine 250 produces each of the appliances directly from the positive tooth model and the desired material. Suitable vacuum molding machines are available from Raintree Essix, Inc.

After production, the plurality of appliances which comprise the system of the present invention are preferably supplied to the treating professional all at one time. The appliances will be marked in some manner, typically by sequential numbering directly on the appliances or on tags, pouches, or other items which are affixed to or which enclose each appliance, to indicate their order of use. Optionally, written instructions may accompany the system which set forth that the patient is to wear the individual appliances in the order marked on the appliances or elsewhere in the packaging. Use of the appliances in such a manner will reposition the patient's teeth progressively toward the final tooth arrangement.

While the above is a complete description of the preferred embodiments of the invention, various alternatives, modifications, and equivalents may be used. Therefore, the above description should not be taken as limiting the scope of the invention which is defined by the appended claims.

What is claimed is:

1. A method for fabricating a plurality of dental incremental position adjustment appliances, said method comprising:

providing at the outset of treatment a plurality of digital data sets representing a plurality of successive tooth arrangements progressing from an initial tooth arrangement to a final tooth arrangement for an individual patient; and

controlling a fabrication machine based on individual ones of the digital data sets to produce the plurality of appliances for the individual patient.

2. A method as in claim 1, wherein providing the digital data comprises providing a plurality of digital data sets, wherein each set represents one of the successive tooth arrangements.

3. A method as in claim 2, wherein controlling the fabrication machine comprises:

providing a volume of non-hardened polymeric resin; and selectively hardening the resin in a shape corresponding to each of the appliances.

4. A method as in claim 3, wherein hardening comprises scanning a laser to selectively harden the resin.

5. A method as in claim 3, wherein scanning produces an appliance comprising a thin polymeric shell.

6. A method as in claim 1, wherein controlling the fabrication machine comprises:

providing a volume of non-hardened polymeric resin; and selectively hardening the resin in a shape corresponding to each of the appliances.

7. A method as in claim 6, wherein selectively hardening comprises scanning a laser to selectively harden the resin.

8. A method as in claim 6, wherein scanning produces an appliance comprising a thin polymeric shell.

16

9. A method for fabricating a plurality of dental incremental position adjustment appliances, said method comprising:

providing at the outset of treatment a plurality of digital data sets representing a plurality of successive tooth arrangements progressing from an initial tooth arrangement to a final tooth arrangement; and

controlling a fabrication machine based on individual ones of the digital data sets to produce the plurality of appliances.

10. A method as in claim 9, wherein providing the digital data comprises providing a plurality of digital data sets, wherein each set represents one of the successive tooth arrangements.

11. A method as in claim 10, wherein controlling the fabrication machine comprises:

providing a volume of non-hardened polymeric resin; and selectively hardening the resin in a shape corresponding to each of the appliances.

12. A method as in claim 11, wherein hardening comprises scanning a laser to selectively harden the resin.

13. A method as in claim 11, wherein scanning produces an appliance comprising a thin polymeric shell.

14. A method as in claim 9, wherein controlling the fabrication machine comprises:

providing a volume of non-hardened polymeric resin; and selectively hardening the resin in a shape corresponding to each of the polymeric shell appliances.

15. A method as in claim 14, wherein selectively hardening comprises scanning a laser to selectively harden the resin.

16. A method as in claim 14, wherein scanning produces an appliance comprising a thin polymeric shell.

17. A method for fabricating a plurality of dental incremental position adjustment appliances, said method comprising:

providing digital data representing a plurality of successive tooth arrangements progressing from an initial tooth arrangement to a final tooth arrangement; and

controlling a fabrication machine based on the digital data to produce the appliances wherein controlling the fabrication machine comprises:

providing a volume of non-hardened polymeric resin; and selectively hardening the resin in a shape corresponding to each of the polymeric shell appliances.

18. A method as in claim 17, wherein providing the digital data comprises providing a plurality of digital data sets, wherein each set represents one of the successive tooth arrangements.

19. A method as in claim 17, wherein the fabrication machine is controlled to produce polymeric shell appliances.

20. A method as in claim 17, wherein selectively hardening comprises scanning a laser to selectively harden the resin.

21. A method as in claim 20, wherein scanning produces an appliance comprising a thin polymeric shell.

* * * * *